



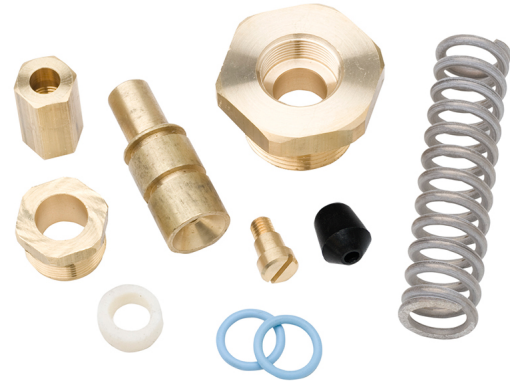
model VRKM8A

Valve Repair Kit

FEATURES & BENEFITS

OPTIONS

To see all options for this model, visit www.hawSCO.com



SPECIFICATIONS

Model VRKM8A is a repair kit for Model MK8A special freeze-proof valve.

APPLICATIONS

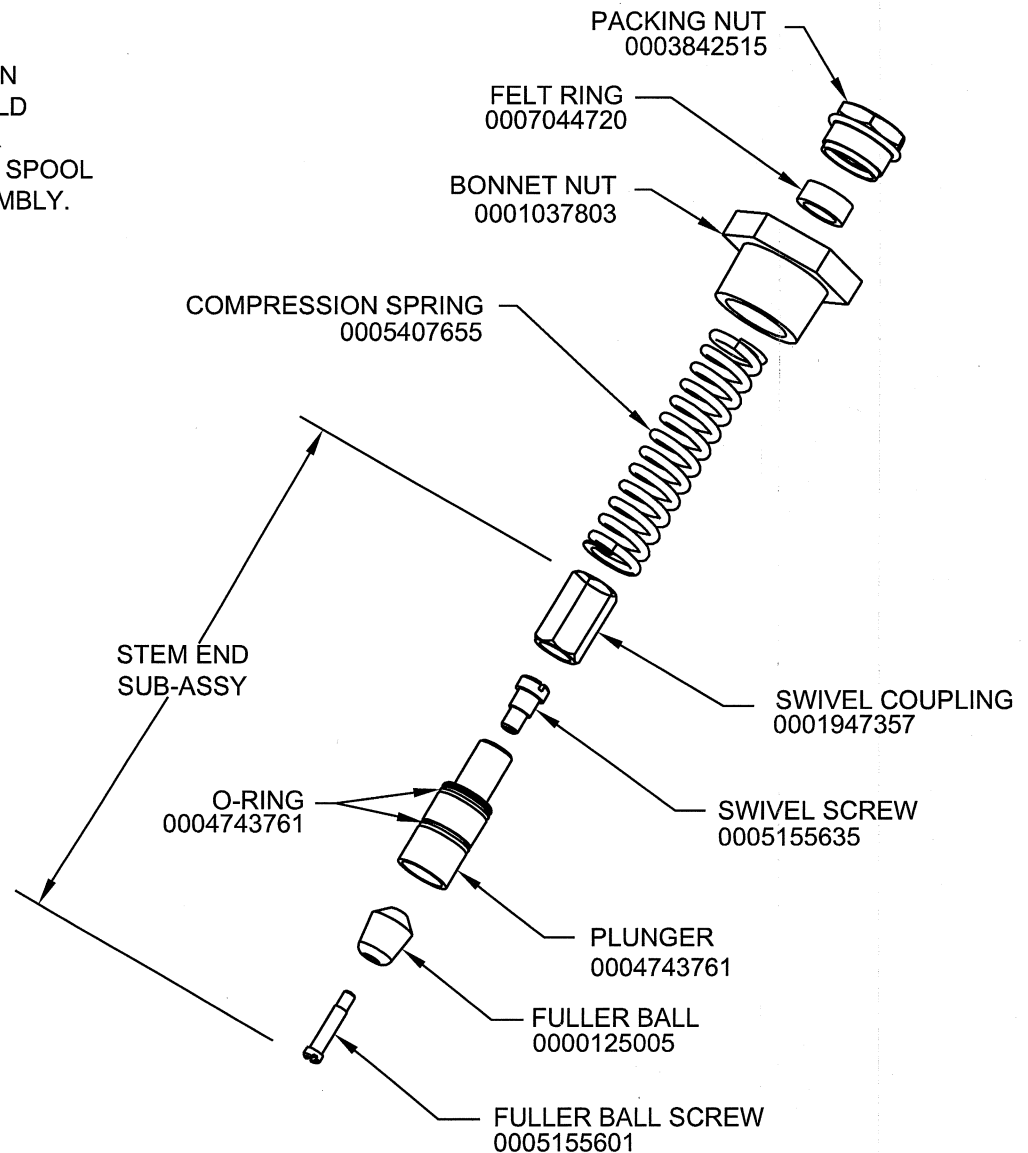



ATTENTION INSTALLER:

PLEASE COMPARE THE BRASS SPOOLS. IF THE TOP O-RING GROOVE OF THE NEW SPOOL IS ROUGHLY 1/16" LOWER THAN THE TOP O-RING GROOVE OF THE OLD SPOOL, USE YOUR OLD SPOOL, BUT REPLACE THE O-RINGS AND THE SEAT WASHER WITH THE NEW PARTS FROM THE NEW SPOOL. IF YOUR OLD SPOOL MATCHES THE NEW SPOOL, REPLACE THE COMPLETE ASSEMBLY.

INSTALLATION INSTRUCTIONS

1. SHUT OFF WATER SUPPLY.
2. DISCONNECT LINKAGE ASSEMBLY FROM TOP OF OLD STEM ASSEMBLY.
3. REMOVE BONNET NUT.
4. REMOVE OLD END STEM SUB-ASSEMBLY.
5. EXAMINE SEAT AREA OF UNDERGROUND VALVE BODY FOR DAMAGE OR DEBRIS.
6. TURN ON WATER AND FLUSH IF DEBRIS FOUND.
7. REPLACE STEM END SUB-ASSEMBLY.
8. REINSTALL STEM END SUB-ASSEMBLY WITH NEW SPRING, BONNET NUT, FELT RING AND PACKING NUT.
9. RECONNECT LINKAGE ASSEMBLY.
10. TURN ON WATER SUPPLY.
11. TEST UNIT.



				INFO FAX : 1-888-FAX-HAWS (1-888-329-4297) 1455 Kleppe Ln, Sparks NV, 89431 Phone: 775-359-4712 Fax: 775-359-7424 Haws Ag Bachweg 3 CH-3401 Burgdorf Switzerland Haws Mfg Pte Ltd 74 Sungei Kadut Loop Singapore 729531 e-mail: Haws@hawsco.com website: www.hawsco.com	
ECR NO.	REVISED PER	BY	MODEL(S)	PART NUMBER	
02	08/23/01		VRKMK8A	0002080371	
DRAWING DATE			INFO FAX DOC #	DRAWING NUMBER	REV
08/23/01			2876582	07729A00	1
SCALE: 1:1			DRAWING TYPE: INSTALLATION/FAKBACK		SIZE: A SNT: 1 OF 1