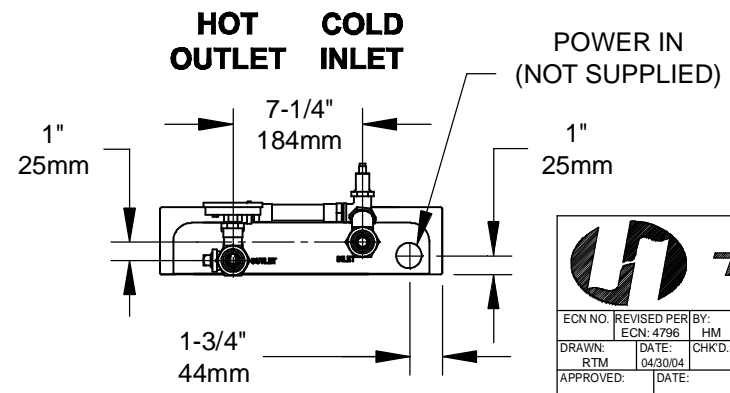


NOTES:

1. CAUTION: THIS UNIT IS INTENDED "FOR INDOOR USE ONLY"
2. USE TEFLON THREAD SEAL TAPE ON ALL WATER CONNECTIONS. **DO NOT USE PIPE DOPE.**
3. DIMENSIONS MAY VARY BY: ± 1/2" [12.7mm].



1455 KLEPPE LANE
SPARKS, NEVADA 89431
(775) 359-4712 FAX (775) 359-7424
E-MAIL: HAWS@HAWS.CO.COM
WEBSITE: WWW.HAWS.CO.COM

ECN NO. REVISED PER BY:	ECN: 4796	HM	MODEL(S)		PART NUMBER
DRAWN:	DATE:	CHKD.:		TWBS.EW.H	0002080380.D
APPROVED:	DATE:				DRAWING NO. REV
					12681A00 10
SCALE: 1:10			DRAWING TYPE: INSTALLATION		SIZE: A SHEET 1 OF 1