



model **SP155**
Thermostat

FEATURES & BENEFITS

OPTIONS

To see all options for this model, visit www.hawesco.com



SPECIFICATIONS

Model SP155 is a thermostat for the heat traced cable outdoor Models 8317CTFP and 8317CTFP.220V. It has hermetically sealed contacts. Opens (rising) at 62° F (17° C) and closes (falling) at 52° F (11° C).

APPLICATIONS



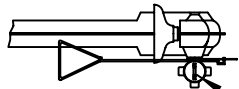


FIGURE 3

REPLACEMENT INSTRUCTIONS:

- 1) REMOVE JUNCTION BOX ACCESS COVER.
- 2) DISCONNECT THERMOSTAT LEADS FROM TERMINAL BLOCK.
- 3) UNTHREAD THERMOSTAT FROM MOUNTING PAD.
- 4) THREAD NEW THERMOSTAT ONTO MOUNTING PAD LOCATED INSIDE JUNCTION BOX.
- 5) CONNECT THERMOSTAT LEADS TO TERMINAL BLOCK (SEE WIRING DIAGRAM).
- 6) REPLACE ACCESS COVER.

— THERMO INSIDE

REPLACEMENT INSTRUCTIONS:

- 1) REMOVE JUNCTION BOX ACCESS COVER.
- 2) DISCONNECT THERMOSTAT LEADS FROM TERMINAL BLOCK.
- 3) UNTHREAD THERMOSTAT FROM MOUNTING PAD.
- 4) THREAD NEW THERMOSTAT ONTO MOUNTING PAD LOCATED

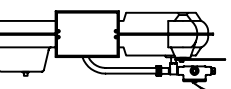
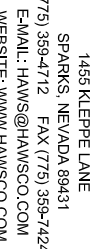


FIGURE 4

SPARKS, NEVADA 89431

- (775) 359-4712 FAX (775) 359-7422
E-MAIL: HAWS@HAWSCO.COM
WEBSITE: WWW.HAWSCO.COM
- | | |
|------------------|------------|
| PART NUMBER: | 0002080320 |
| ORDERING NUMBER: | |



--	--	--	--