



INSTALLATION, OPERATION & MAINTENANCE INSTRUCTIONS

1455 Kleppe Lane ♦ Sparks, NV 89431-6467 ♦ (775) 359-4712 ♦ Fax (775) 359-7424
HAWS AG ♦ Bachweg 3 ♦ CH-3401 Burgdorf ♦ Switzerland
Haws Mfg. Pte Lt. ♦ 72 Sungei Kadut Drive ♦ Singapore 729531
E-mail: haws@hawsco.com ♦ website: www.hawsco.com

No. 2080319(2)

Model SP154DPDT Flow Switch

NOTE TO INSTALLER: Please leave this information with the Maintenance Department.

LIMITED WARRANTY

HAWS® warrants that all of its products are guaranteed against defective material or poor workmanship for a period of **one year from date of shipment**. HAWS liability under this warranty shall be discharged by furnishing without charge F.O.B. HAWS Factory any goods, or part thereof, which shall appear to the Company upon inspection to be of defective material or not of first class workmanship, provided that claim is made in writing to company within a reasonable period after receipt of the product. Where claims for defects are made, the defective part or parts shall be delivered to the Company, prepaid, for inspection. HAWS will not be liable for the cost of repairs, alterations or replacements, or for any expense connected therewith made by the owner or his agents, except upon written authority from HAWS, Sparks, Nevada. HAWS will not be liable for any damages caused by defective materials or poor workmanship, except for replacements, as provided above. Buyer agrees that Haws has made no other warranties either expressed or implied in addition to those above stated, except that of title with respect to any of the products or equipment sold hereunder and that HAWS shall not be liable for general, special, or consequential damages claimed to arise under the contract of sale.

NO OTHER WARRANTIES EXPRESSED OR IMPLIED ARE AUTHORIZED, PROVIDED OR GIVEN BY HAWS.

SHOULD YOU EXPERIENCE DIFFICULTY WITH THE INSTALLATION OF THIS MODEL, PLEASE CALL:

1-800-766-5612

FOR PARTS CALL:

1-800-758-9378

**(U.S.A. AND CANADA ONLY) MONDAY-THURSDAY: 6:00 A.M. – 4:00 P.M. PST
FRIDAY: 6:00 A.M – 1:00 P.M. PST**

IMPORTANT, PLEASE READ

This flow switch has been specially modified by the manufacturer with an oversize actuation paddle to provide for switch actuation at the low flow rate of 2.4GPM. The switch must be mounted with the tee horizontal and switch body positioned vertically as shown in installation drawing. Never unthread switch body from tee bushing or switch will be ruined and void warranty. Switch must be mounted with 6" straight pipe sections on both sides to prevent the introduction of turbulence which would raise the flow rate required for switch actuation. Due to the special oversize paddles, these switches are assembled and shipped as matched switch-bushing-tee sets and must be returned fully assembled for warranty claims.

ELECTRICAL RATING: 5 AMPS, 125/250 VAC, 60 Hz. 5 AMPS resistive, 3 AMPS inductive @ 30 VDC.

EXPLOSION PROOF INSTALLATION: Flow switch contains arcing contacts. This switch must be installed with properly rated conduit seal, junction box and conduit according to electrical code procedure for explosion proof installation.

TROUBLESHOOTING	
PROBLEM	REPAIR CHECKLIST
1. Switch actuates with shower but not eyewash.	1. a. Check installation to insure 6" minimum straight run of pipe on both sides of switch, horizontal tee, vertical switch body. b. Check flow direction arrow on side of switch body. Is body oriented in proper direction?
2. Switch actuates at wrong times due to water hammer.	2. Install check valve and water hammer arrestor up stream from valve.
3. Switch does not actuate.	3. a. Is flow rate greater than 2.4 GPM? b. Is switch installed properly? (See installation drawing) c. Check electrical contacts with multimeter. d. Check flow direction arrow on side of switch body. Is switch oriented in proper direction? e. If used with a low current circuit, try switch with a 1 AMP load (100 WATT light bulb) to burn oxidation off switch contacts. f. Debris inside switch housing tee may cause malfunction. Insure no debris in switch assembly housing tee.

NOTE:
DASHED LINES DENOTE FIELD PIPING.

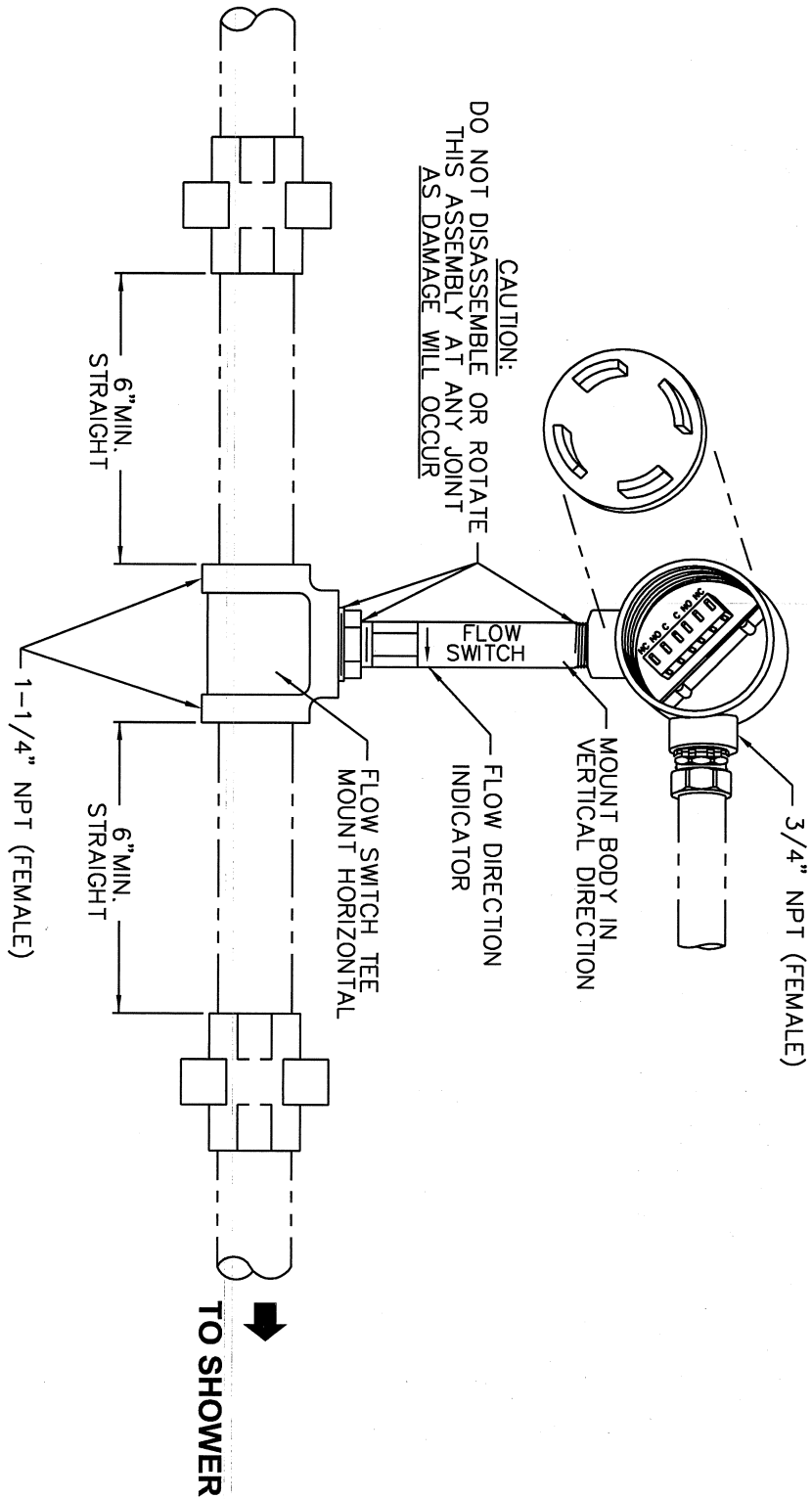


FIGURE 1

Haws Corporation
 1455 Kieppe Ln, Sparks, NV 89431
 Phone: 775-359-4712 Fax: 775-359-7424
 Haws Ag Bockweg 3 CH-3401 Burgdorf Switzerland
 Haws Mig Pte Ltd 79 Sungai Kidul Lopo Singapore 729531
 e-mail: Haws@hawsco.com website: www.hawsco.com

INFO FAX : 1-888-FAX-HAWS (1-888-329-4297)

TOP NO.	REVISED	DATE	BY	MODEL(S)
12918C00	1	06/07	SP	154DPDT
DATE	BY	SCALE	DR	2SP154DPDT
06/07	SP	1:4	SP	
12918C00	1			
12918C00	1			
12918C00	1			