



model SK3HPS

Fountain Skirt

FEATURES & BENEFITS

OPTIONS

To see all options for this model, visit www.hawSCO.com



Shown mounted on 1011HPS

SPECIFICATIONS

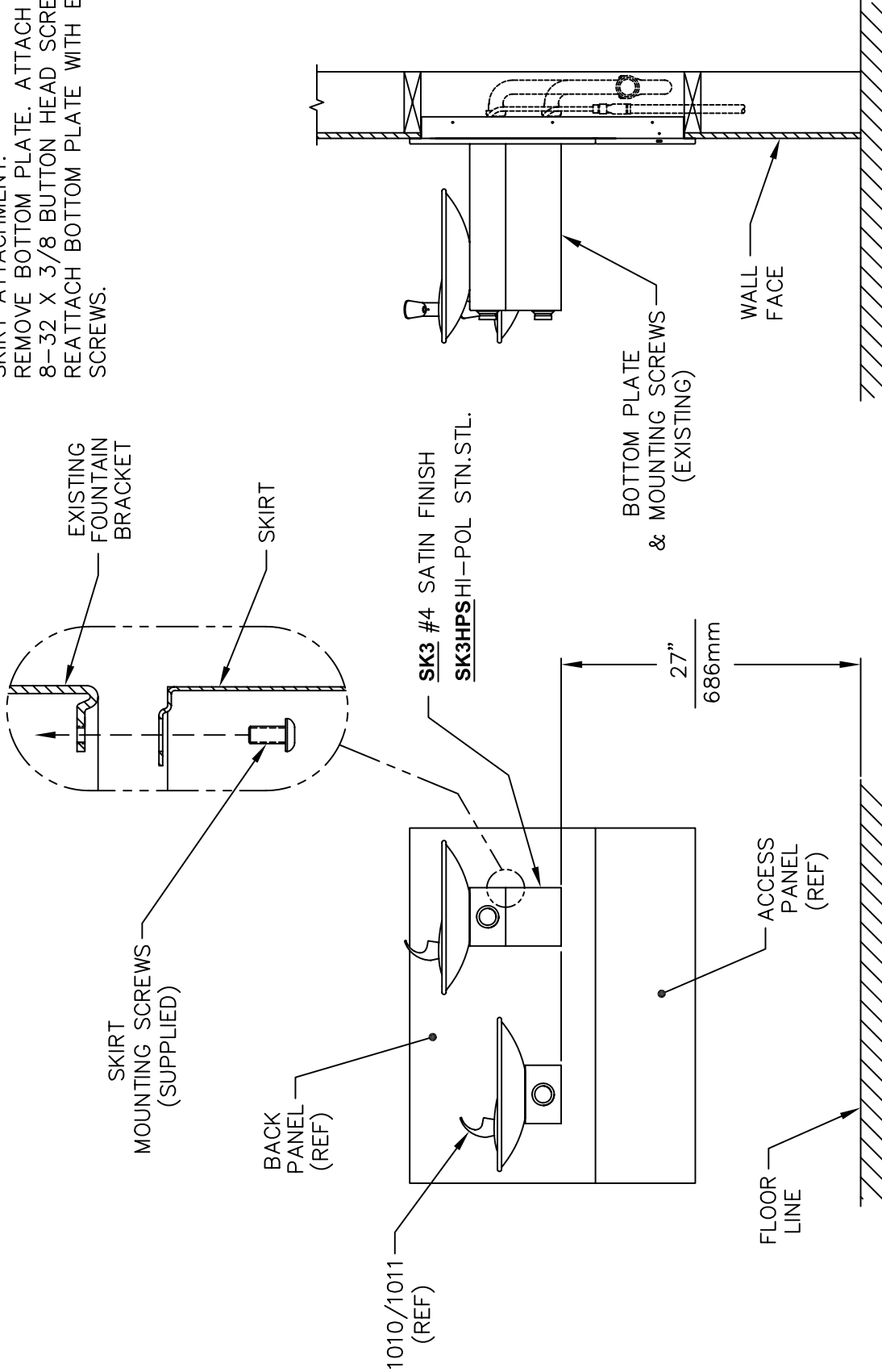
Model SK3HPS is a wrap around matching high polished finished stainless steel cane touch skirt for installation on the high unit to comply with ADA protruding objects guidelines. For use on Models 1011HPS and H1011.8HPS.

APPLICATIONS

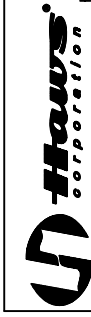


THIS DOCUMENT IS TRUE AND CORRECT AT TIME OF PUBLICATION. CONTINUED PRODUCT IMPROVEMENTS MAKE SPECIFICATIONS AND MEASUREMENTS SUBJECT TO CHANGE WITHOUT NOTICE.

SKIRT ATTACHMENT:
 REMOVE BOTTOM PLATE. ATTACH SKIRT WITH 8-32 X 3/8 BUTTON HEAD SCREWS SUPPLIED. REATTACH BOTTOM PLATE WITH EXISTING 8-32 SCREWS.



**ASSEMBLY SHOWN WITH OPTIONAL
 MTGFR.DF2 MOUNTING FRAME
 AND ACCESS PANEL**



INFO FAX : 1-888-FAX-HAWS (1-888-329-4297)
 1455 Kleppe Ln, Sparks NV, 89431
 Phone: 775-359-4712 Fax: 775-359-7424
 Haws Ag, Bachweg 3, CH-3401 Burgdorf Switzerland
 Haws Mtg Pte Ltd 74 Sungai Kadut Loop Singapore 729531
 e-mail: Haws@hawsco.com website: www.hawsco.com

FOR NO.:	REVISED BY:	DATE:	BY:	DATE:	APPROVED:	SCALE:	DATE:	BY:	DATE:
1010/1011 (REF)	ECN: 4087	01/09	BW			1:1			
1010/1011 (REF)	1010/1011 (REF)	1010/1011 (REF)	1010/1011 (REF)	1010/1011 (REF)	1010/1011 (REF)	1010/1011 (REF)	1010/1011 (REF)	1010/1011 (REF)	1010/1011 (REF)
1010/1011 (REF)	1010/1011 (REF)	1010/1011 (REF)	1010/1011 (REF)	1010/1011 (REF)	1010/1011 (REF)	1010/1011 (REF)	1010/1011 (REF)	1010/1011 (REF)	1010/1011 (REF)