



model MTGFR.HSC

Mounting Frame

FEATURES & BENEFITS

CONSTRUCTION

Constructed of heavy gauge galvanized steel, this frame provides the needed support for the remote chiller portion of the Haws HydrationStation along with added corrosion resistance for long life.

OPTIONS

To see all options for this model, visit www.hawesco.com



SPECIFICATIONS

Model MTGFR.HSC, galvanized steel mounting frame with grille allows a remote chiller to be added to the Hydration Station®.

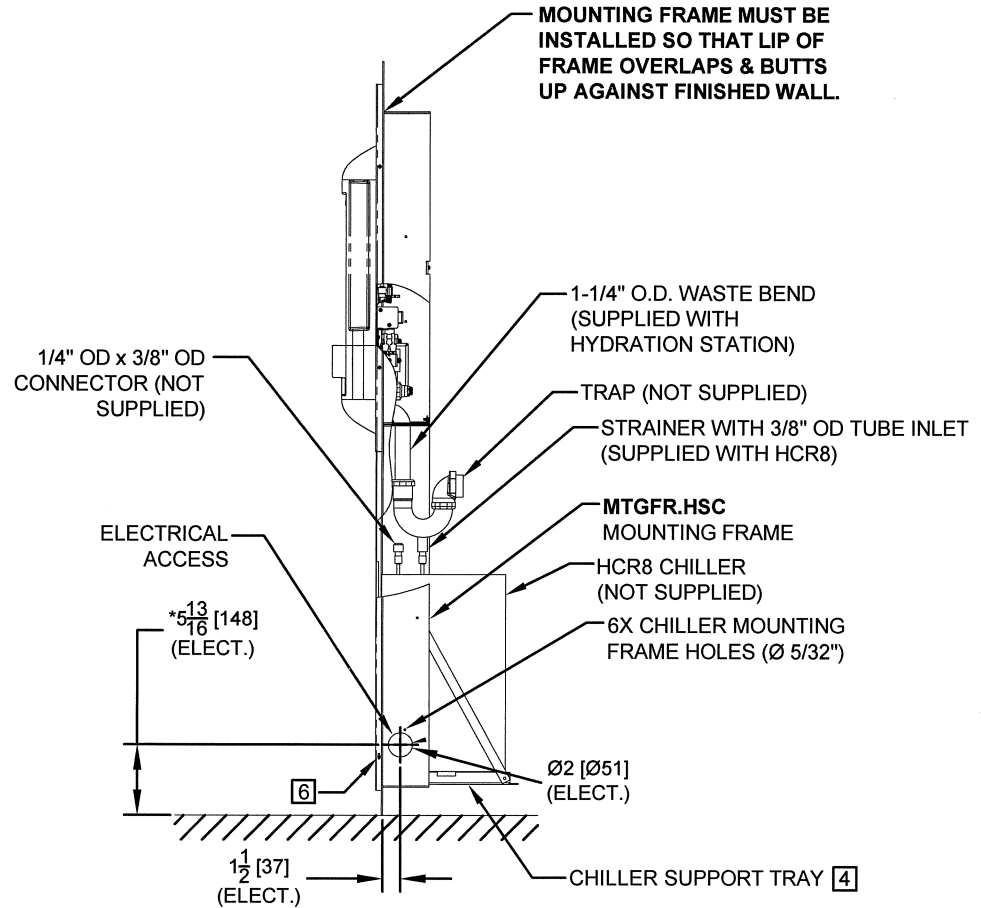
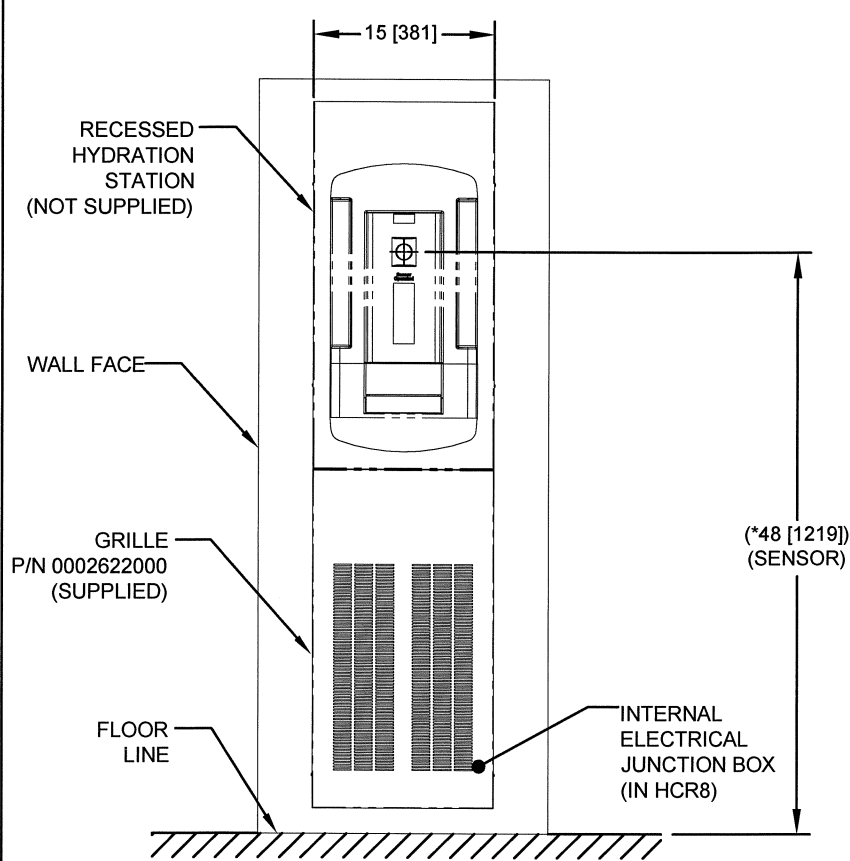
APPLICATIONS


Model MTGFR.HSC mounting frame is manufactured of heavy gauge galvanized steel with pre-drilled mounting holes. For use with the Hydration Station, this mounting frame may be shipped prior to cooler for roughing-in installation.



MOUNTING FRAME INSTALLATION

1. SEE INSTALLATION INSTRUCTIONS RECEIVED WITH HYDRATION STATION AND HCR8 FOR ADDITIONAL PERTINENT INFORMATION. FOR ROUGH-IN, USE THE APPROPRIATE DIMENSIONS SHOWN.
2. HOLD ROUGH-IN DIMENSIONS $\pm 1/8"$ (3.2mm).
3. WHEN INSTALLING THIS UNIT LOCAL, STATE OR FEDERAL CODES SHOULD BE ADHERED TO. FOR DIFFERENT INSTALLATION HEIGHTS OTHER THAN SHOWN, DIMENSIONS MARKED (*) MUST BE ADJUSTED ACCORDINGLY.
4. ALIGN HOLES IN CHILLER SUPPORT TRAY WITH HOLES IN FRAME AND FASTEN IN PLACE WITH #10 SHEET-METAL SCREWS SUPPLIED WITH UNIT.
5. USE NSF-61 3/8" OD TUBING WITH SUFFICIENT PRESSURE RATING TO CONNECT CHILLER AND HYDRATION STATION.
6. TO ATTACH GRILLE TO MOUNTING FRAME, SLIDE 6-32 U-NUTS (SUPPLIED), THREADED PORTION INWARD, OVER MOUNTING TABS ON FRAME. PLACE GRILLE OVER FRAME AND INSERT 6-32 SCREWS (SUPPLIED) THROUGH SLOTS IN SIDE OF GRILLE AND SCREW INTO U-NUTS.

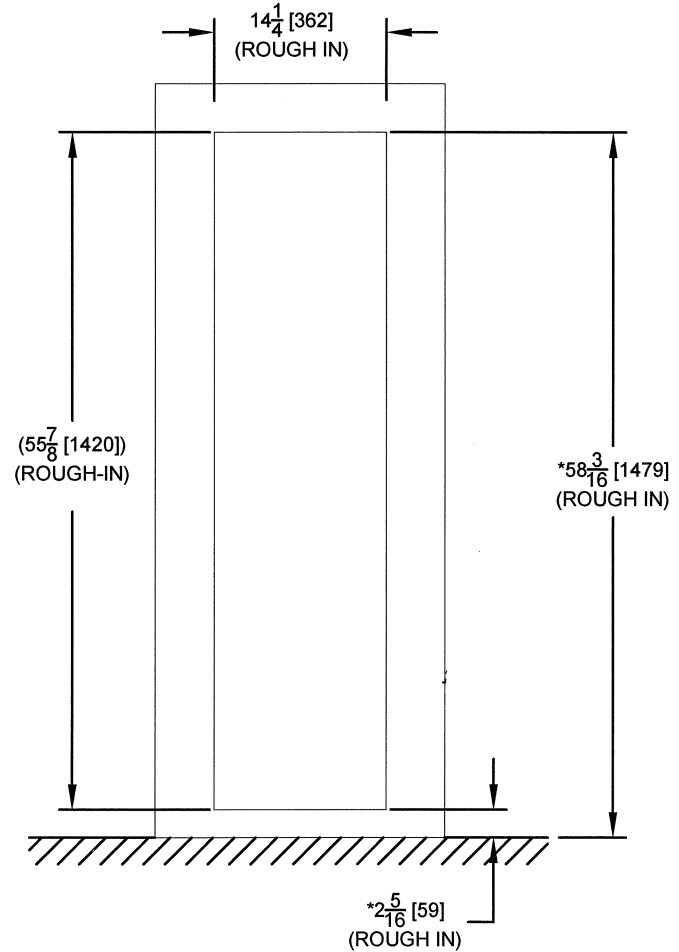
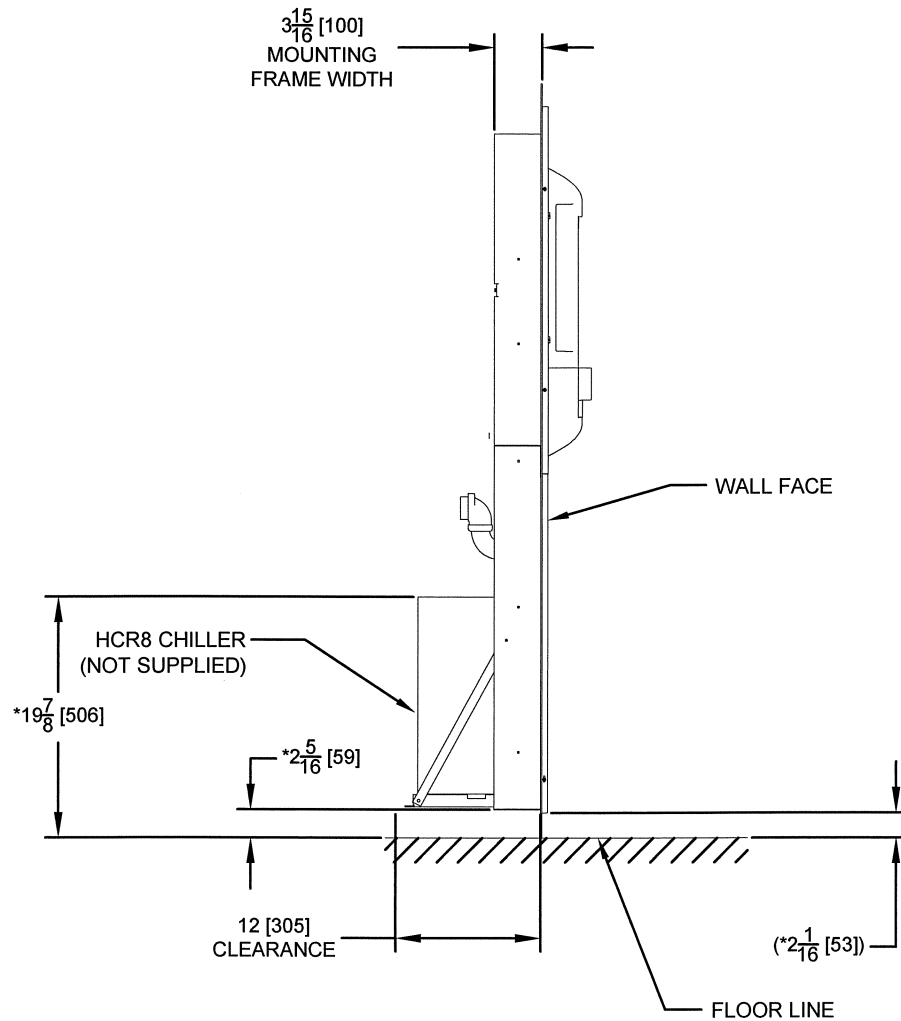




Haws
corporation

1455 KLEPPE LANE
SPARKS, NEVADA 89431
(775) 359-4712 FAX (775) 359-7424
E-MAIL: HAWS@HAWS.CO.COM
WEBSITE: WWW.HAWS.CO.COM

ECN NO. 4310	REVISED PER ECN: 4569	BY: HM	MODEL(S): MTGFR.HSC - 2000 CHILLER MTG FRAME	PART NUMBER: 0002080290
DRAWN: B. WILMSATT	DATE: 12/07/09	CHKD: [Signature]	INFO FAX DOC #:	DRAWING NUMBER: 15937A
APPROVED: [Signature]	DATE:	SCALE: N/A	DRAWING TYPE: INSTALLATION/FAXBACK	REV. 3
				SIZE: A SHEET 1 OF 2



ROUGH-IN VIEW

- CHILLER ELECTRICAL INSTALLATION**
1. ENSURE ELECTRICAL POWER IS OFF AND POWER MATCHES VOLTAGE, PHASE AND CYCLE LISTED ON CHILLER LABEL.
 2. REMOVE FRONT PANEL TO GAIN ACCESS TO INTERNAL JUNCTION BOX.
 3. HARD WIRE CHILLER THROUGH ITS SIDE. WIRE IN ACCORDANCE WITH LOCAL, STATE OR FEDERAL ELECTRICAL CODES.
 4. REPLACE FRONT PANEL. DO NOT APPLY POWER UNTIL WATER SUPPLY IS CONNECTED AND ON.

		1455 KLEPPE LANE SPARKS, NEVADA 89431 (775) 359-4712 FAX (775) 359-7424 E-MAIL: HAWS@HAWSCO.COM WEBSITE: WWW.HAWSCO.COM	
ECN NO. 4310	REVISED PER ECN: 4569	BY: HM	MODEL(S): MTGFR.HSC - 2000 CHILLER MTG FRAME
DRAWN: B. WIMSATT	DATE: 12/07/09	CHKD: (Signature)	INFO FAX DOC #: (Signature)
APPROVED: (Signature)	DATE: (Signature)	SCALE: N/A	DRAWING TYPE: INSTALLATION/FAXBACK
PART NUMBER: 0002080290		DRAWING NUMBER: 15937A	REV: 3
SIZE: A		SHEET 2 OF 2	

Part No. 15937A