



model HCR8.50

Remote Chiller

FEATURES & BENEFITS

CONSTRUCTION

Constructed of heavy gauge galvanized steel, its compact style can be concealed under a counter, and between or within walls.

CHILLED WATER

Efficient compact design provides 8 gallons (30.3 L) per hour of 50° F (10° C) cold water to a wide variety of fountains.

OPTIONS

- ❑ Shelf: Model H7149MS, mounting shelf for remote chillers.

To see all options for this model, visit www.hawsco.com



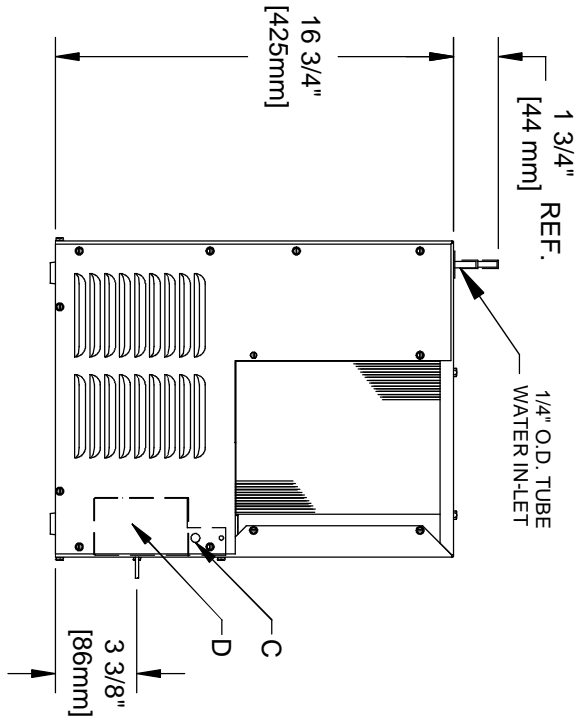
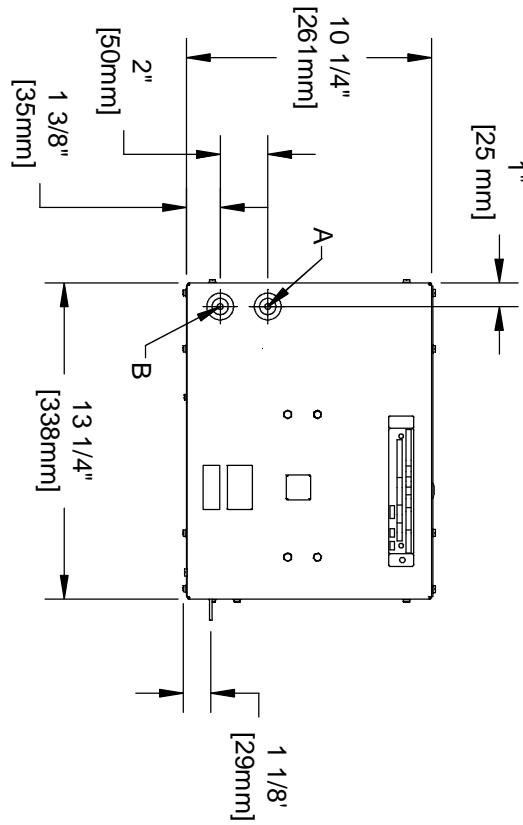
SPECIFICATIONS

Model HCR8.50 is a 220 Volt, 50 Hz remote chiller provides 8.0 gallons (30.3 L) per hour of cold water. This remote can provide chilled water to a water to a wide variety of fountains with modern styling. Chiller can be concealed under a counter, between or within walls (check local codes), or high on a wall or column. Ideally suited for factories, cafeterias, restaurants, schools, and offices. Other uses could be for precooling for beverage dispensers and fountains, machine coolant cooling, photo and X-ray processing, laboratory experimental work, or a capacity booster for ice cube makers. Model HCR8.50, 8-gph remote chiller, includes a heavy gauge galvanized steel cabinet. When chiller is installed in wall be certain that it can always be removed through opening without damaging either chiller or wall. Allow minimum 1" clearance. Minimum 4" clearance on back side. Unit is furnished with leads enclosed inside terminal enclosure 220 Volt, 50 Hz, single phase. Capacity is based on ARI standard of rating conditions of 50° F (10° C) drinking water, 80° F (26° C) inlet water, and 90° F (32° C) room temperature.

APPLICATIONS

This remote chiller can provide 8 gallons per hour of 50° F cold water to a wide variety of fountains. Specifically, this type chiller may be used in conjunction with a fountain in settings such as: schools, office buildings, shopping malls, and other indoor environments where there is a demand for a chilled water source. Electric water coolers are not recommended or designed for outdoor applications or enclosed pool areas (chlorine). These conditions may void warranty.



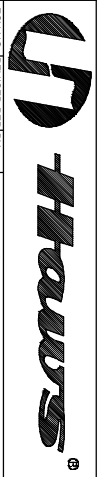
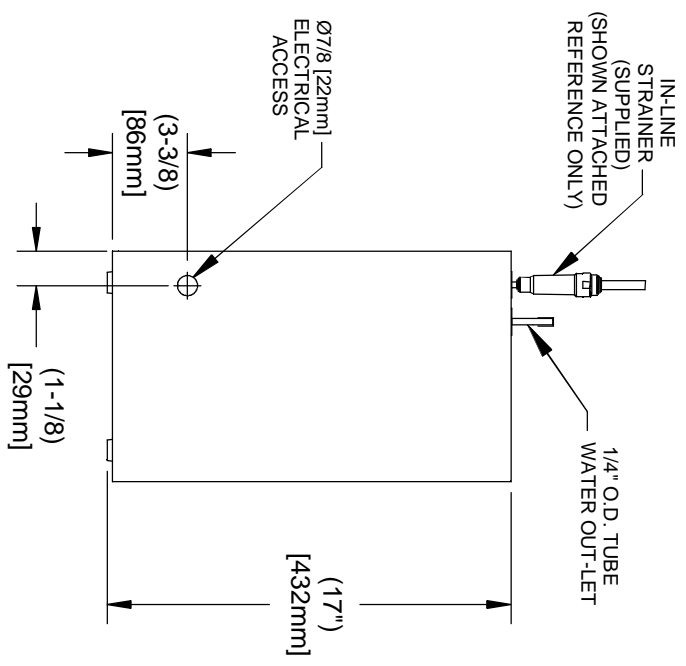


LEGEND

- A = 1/4" O.D. TUBE WATER OUTLET
- B = 1/4" O.D. TUBE WATER INLET
- C = TEMPERATURE ADJUSTMENT
- D = ELECTRICAL

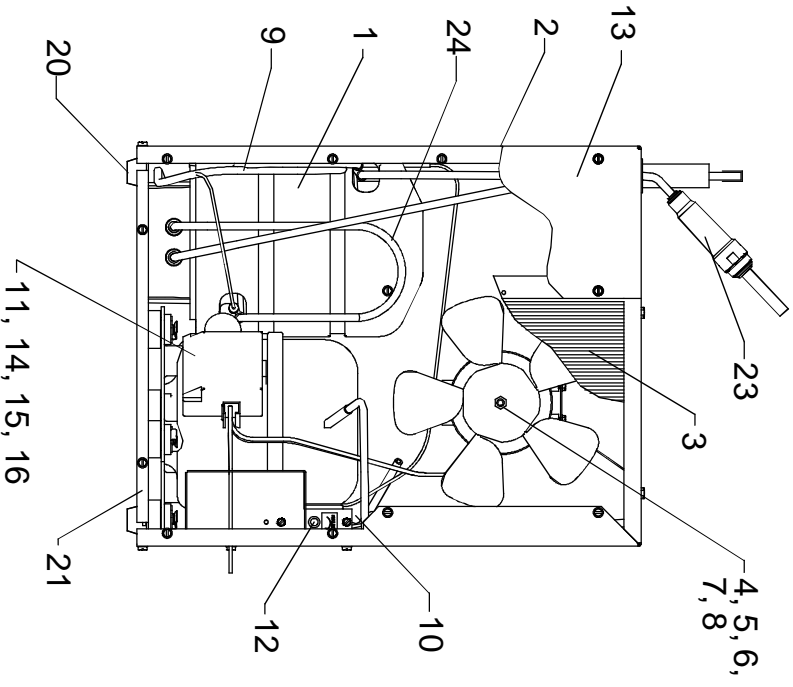
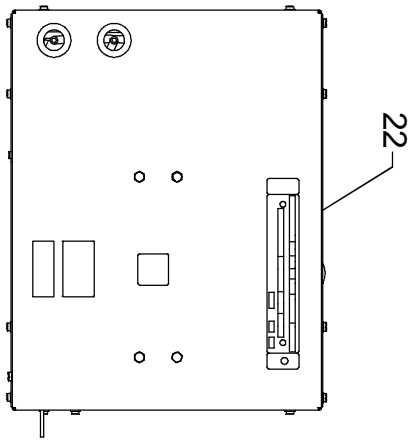
NOTES:

1. ALLOW 4 INCHES [102mm] PER SIDE FOR VENTILATION.
2. IT IS RECOMMENDED THAT ALL WATER OUTLETS BE NOT MORE THAN 7 FEET FROM THE CHILLER AND ALL COLD WATER PIPING BE COVERED WITH SPONGE RUBBER OR ICE WATER TYPE INSULATION OF ADEQUATE THICKNESS.
3. MAKE SURE POWER SUPPLY IS IDENTICAL IN VOLTAGE, CYCLE, AND PHASE TO THAT SPECIFIED ON THE COOLER SERIAL PLATE. NEVER WIRE COMPRESSOR DIRECTLY TO POWER SUPPLY.
4. A CLASS A GROUND-FAULT CIRCUIT INTERRUPTER (GFCI) SHALL BE INSTALLED IN THE BRANCH-CIRCUIT SUPPLYING POWER TO THIS UNIT.
5. MODEL NUMBERS AS LISTED ON UNITS:
FOR HCR8: HCR8*1J (115V, 60HZ, 5 AMPS)
FOR HCR8.50: HCR8* 2J (220V, 50HZ, 2 AMPS)



1455 KLEPPE LANE
SPARKS, NEVADA 89431
(775) 359-4712 FAX (775) 359-7424
E-MAIL: HAWS@HAWSCO.COM
WEBSITE: WWW.HAWSCO.COM

ECN NO	REVISED PER BY:	MODEL(S)	PART NUMBER
4403	LECN 4888 HM	HCR8(15)/HCR8.50(220V)	0002075001 D
DRAWN	DATE	CHKD.	DRAWING NO.
H. MERRITT	06/09/10		15352A00
APPROVED:	DATE	SCALE	DRAWING TYPE
		1:1	INSTALLATION
		SIZE: A	SHEET 1 OF 3



HCR8 115V/60HZ/5 AMPs ITEMIZED PARTS LIST

ITEM	PART NO.	DESCRIPTION
1	66543C	EVAPORATOR TANK ASSY
2	28478C	CABINET
3	66743C	CONDENSER
4	31490C	MOTOR - FAN 115V
5	20282C	BRACKET - FAN MOUNTING
6	30664C	BLADE - FAN
7	70018C	NUT - FAN BLADE
8	56237C	SHROUD - FAN
9	66576C	HEAT EXCHANGER
10	66703C	DRIER
* 11	36094C	COMPRESSOR SERVICE PAK
12	31513C	COLD CONTROL
13	28477C	PANEL - FRONT
14	35768C	COVER - RELAY
15	36158C	OVERLOAD
16	35959C	RELAY
17	100806740570	GROMMET
18	101516143550	STUD - COMP. MOUNTING
19	19037000	CLIP
20	50930C	BUMPER
21	27303C	BASEPLATE
22	22300C	PANEL - REAR
23	55996C	IN-LINE STRAINER
24	66723C	EVAPORATOR TUBE

HCR8.50 220V/50HZ/2 AMPs

ITEM	PART NO.	DESCRIPTION
4	31430C	MOTOR - FAN 220V
9	66576C	HEAT EXCHANGER
* 11	36085C	COMPRESSOR SERVICE PAK
15	36195C	OVERLOAD
16	36050C	RELAY

***INCLUDES RELAY AND OVERLOAD. IF UNDER WARRANTY, REPLACE WITH SAME COMPRESSOR USED IN ORIGINAL ASSEMBLY.**

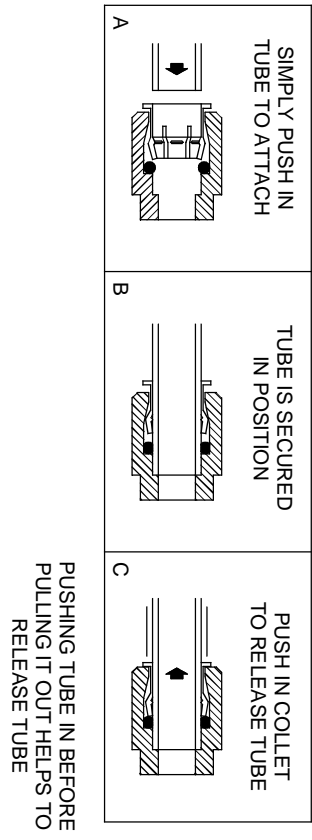
NOTE: ALL CORRESPONDENCE PERTAINING TO ANY OF THE ABOVE WATER COOLER OR ORDERS FOR REPAIR **MUST** INCLUDE MODEL NUMBER AND SERIAL NUMBER OF COOLER, NAME AND NUMBER OF REPLACEMENT PART.



1455 KLEPPE LANE
SPARKS, NEVADA 89431
(775) 359-4712 FAX (775) 359-7424
E-MAIL: HAWS@HAWSCO.COM
WEBSITE: WWW.HAWSCO.COM

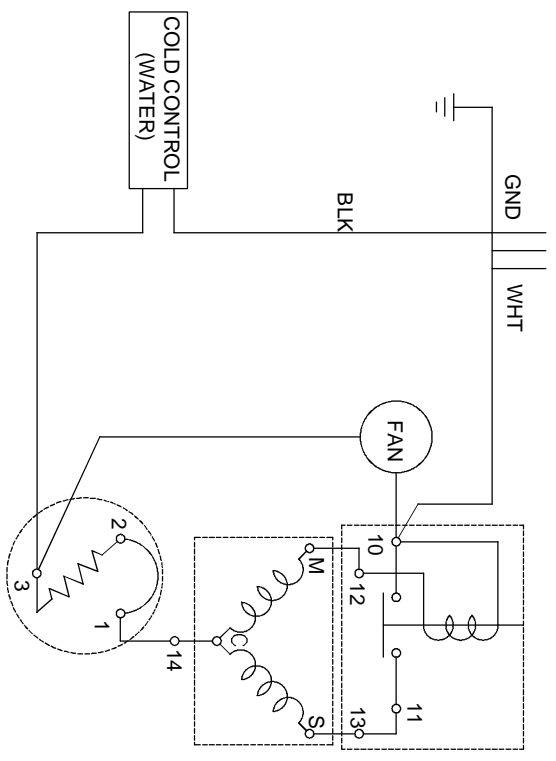
ENGINE REVISIONS BY: HML	MODEL(S)	PART NUMBER
4403	HCR8 (115V)/HCR8.50 (220V)	0002075001.D
DATE: CHK'D	REMOTE CHILLER	DRAWING NO. REV
06/08/10		15352A00 6
APPROVED:	SCALE: 1:1	DRAWING TYPE: INSTALLATION
		SHEET 2 OF 3

OPERATION OF QUICK CONNECT FITTINGS

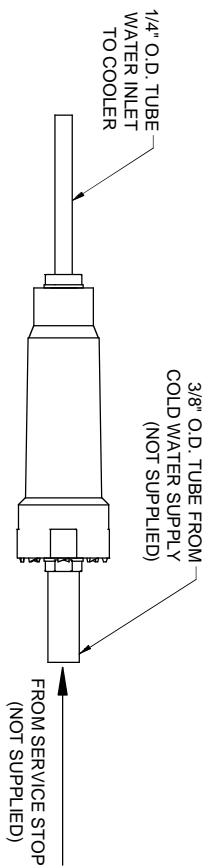


WIRING DIAGRAM

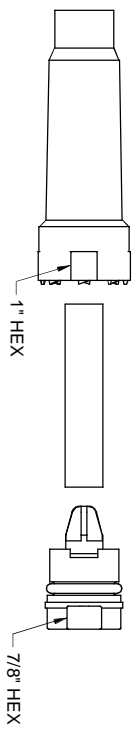
THIS DRAWING IS FOR ILLUSTRATING THE COMPONENTS OF THE ELECTRICAL SYSTEM ONLY



INLET STRAINER ASSEMBLY



NOTE: WATERFLOW DIRECTION



RESTRICTED WATER FLOW MAY BE CAUSED BY CLOGGED SCREEN. REMOVE PLUG AND SCREEN. CLEAN SCREEN AND REPLACE. LUBRICATE O-RING WITH FOOD GRADE PHARMACEUTICAL MINERAL OIL. DO NOT OVERTIGHTEN PLUG OR FITTINGS.



Haws

1455 KLEPPLE LANE
SPARKS, NEVADA 89431
(775) 359-4712 FAX (775) 359-7424
E-MAIL: HAWS@HAWSCO.COM
WEBSITE: WWW.HAWSCO.COM

ECON NO:	REVISED PERIBY:	MODEL(S)	PART NUMBER
4403	HM	HCR8 (115V)/HCR8.50 (220V)	0002075001 D
DRAWN:	DATE:	CHKD:	DRAWING NO
HM	06/08/10		15352A00
APPROVED:	DATE:	SCALE: 1:5	DRAWING TYPE: INSTALLATION
		SIZE: A	SHEET: 3 OF 3