



# model 9200SUR

Surface Mount Cabinet

## FEATURES & BENEFITS

### READY TO USE

No need to punch holes - a choice of panel kits provide the specific layout needed for each of the available Haws thermostatic mixing valves.

## OPTIONS

- ❑ Panel Kit: Model PK01E panel kit used for Haws 9201E mixing valve.
- ❑ Panel Kit: Model PK01EFE panel kit used for Haws 9201EFE mixing valve.
- ❑ Panel Kit: Model PK01H panel kit used for Haws 9201H mixing valve.
- ❑ Panel Kit: Model PK02E panel kit used for Haws 9202E mixing valve

To see all options for this model, visit [www.hawsco.com](http://www.hawsco.com)



## SPECIFICATIONS

Model 9200SUR surface mounted cabinet is manufactured of 18 gauge Type 304 Stainless Steel, locking door which is supplied with a heavy duty stainless steel piano hinge, and removable upper and lower panels to accommodate any of the Haws Thermostatic Mixing Valves. PLEASE LOOK UNDER OPTIONS FOR VALVE TO BE ORDERED FOR CORRECT KIT

## APPLICATIONS

Perfect for those installations where an emergency mixing valve needs to be enclosed and/or protected. Specifically, this cabinet is designed to work in concert with the complete line of Haws Thermostatic Mixing Valves.

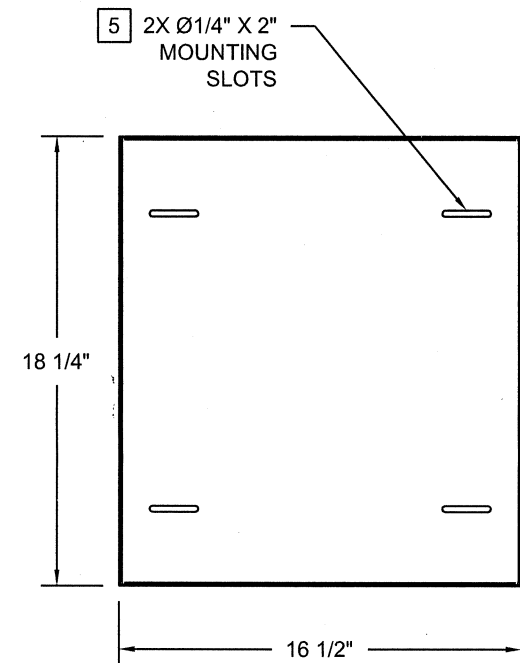
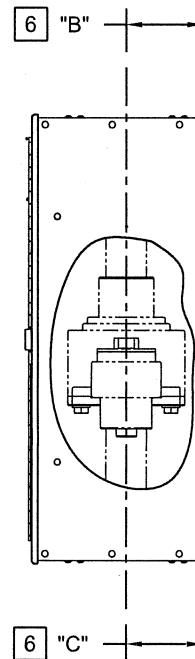
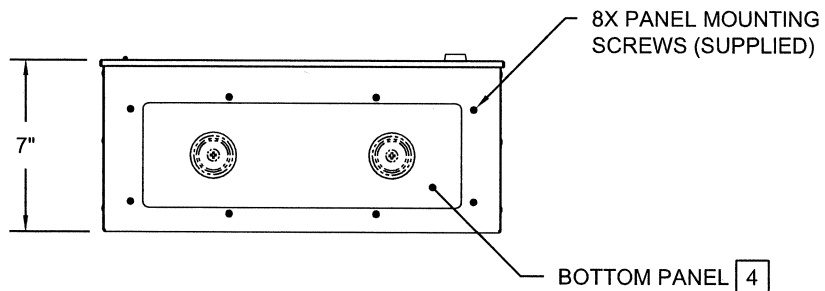
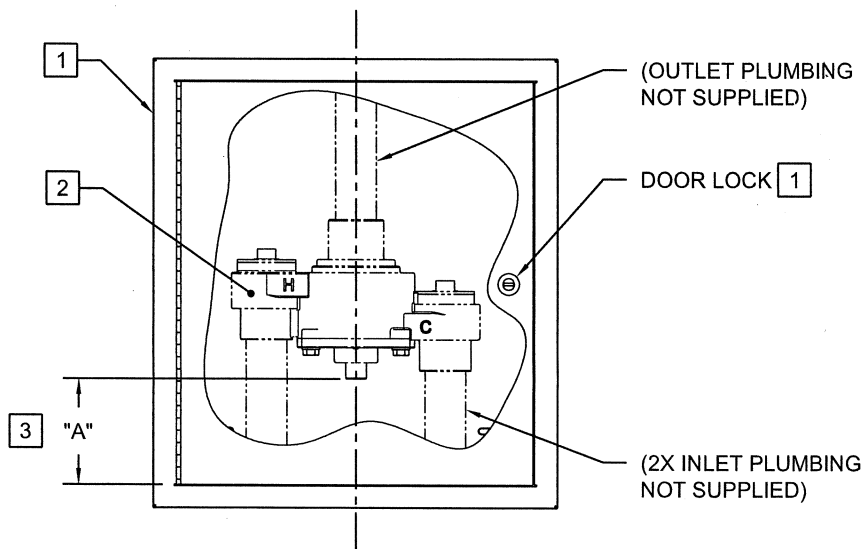
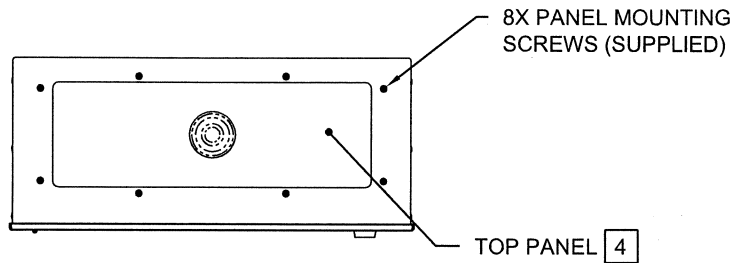


## 9200SUR CABINET INSTALLATION

- 1 SUGGESTED ORIENTATION: CABINET PANEL OPENINGS AND VALVE PORTS  
ALIGNED VERTICALLY WITH DOOR LOCK POSITIONED ON RIGHT SIDE.
- 2 9202E VALVE SHOWN AS EXAMPLE ONLY. VALVE USED DETERMINES PANEL KIT  
SELECTION. SEE PANEL KIT / VALVE TABLE TO MATCH PANELS TO VALVE.
- 3 "A" DIMENSION = SUGGESTED CLEARANCE TO ALLOW ACCESS TO TEMPERATURE  
ADJUSTMENT SCREW. SEE PANEL KIT / VALVE TABLE FOR DIMENSIONING.
- 4 TOP & BOTTOM PANELS SHOWN AS EXAMPLE ONLY. MATCH PANELS TO PORTS ON  
VALVES. FOR ORIENTATION OF VALVES AND ALIGNMENT OF PANELS. GO TO  
WWW.HAWSCO.COM AND SEE THE INSTALLATION, OPERATION & MAINTENANCE  
INSTRUCTIONS FOR EACH VALVE. FOR TECHNICAL SUPPORT, CALL 1-800-766-5612.
- 5 MOUNT CABINET TO WALL FROM INSIDE OF CABINET. (MOUNTING HARDWARE NOT  
SUPPLIED)
- 6 "B" AND "C" DIMENSIONS = DISTANCE FROM WALL SURFACE TO CENTER OF  
CLOSEST VALVE PORT AND PANEL CLEARANCE HOLE.

PANEL KIT / VALVE TABLE				
VALVE USED	PANEL KIT USED	"A" DIM. ±1/2"	"B" DIM. ±1/8"	"C" DIM. ±1/8"
TWBS.HF	PKHF	3 1/2"	2 3/8"	NA
TWBS.SHE	PKSHE	4"	3 1/8"	NA
TWBS.EWE	PKEWE	4"	3 1/8"	NA
9201E	PK01E	4"	3 1/8"	3 1/8"
9201EFE	PK01EFE	4"	3 1/8"	NA
9201H	PK01H	4"	2 1/16"	NA
9202E	PK02E	4"	3 1/8"	3 1/8"
2	2	3	6	6

 <b>Haws®</b>		1455 KLEPPE LANE SPARKS, NEVADA 89431 (775) 359-4712 FAX (775) 359-7424 E-MAIL: HAWS@HAWSCO.COM WEBSITE: WWW.HAWSCO.COM	
		MODEL(S) <b>9200SUR</b> <b>CABINET, SURFACE-MOUNT</b>	
ECN NO. 4722	REVISED PER ECN:	DRAWN: VWC	DATE: 12/8/11
APPROVED: 	DATE: 12/8/11	PART NUMBER <b>0002076111</b>	DRAWING NO. <b>16161A</b>
SCALE: 1/8"		DRAWING TYPE:	SHEET 1 OF 2



 <b>Haws®</b>		1455 KLEPPE LANE SPARKS, NEVADA 89431 (775) 359-4712 FAX (775) 359-7424 E-MAIL: HAWS@HAWS.CO.COM WEBSITE: WWW.HAWS.CO.COM	
ECN NO. 4722	REVISED PER BY: ECN	MODEL(S)	PART NUMBER
DRAWN: VWG	DATE: 12/8/11	9200SUR	0002076111
APPROVED:	DATE:	CABINET, SURFACE-MOUNT	DRAWING NO. 16161A
SCALE: 1/8		DRAWING TYPE: INSTALLATION	REV 1
SIZE: A		SHEET 2 OF 2	