



model 9037
Curtain

FEATURES & BENEFITS

OPTIONS

To see all options for this model, visit www.hawesco.com



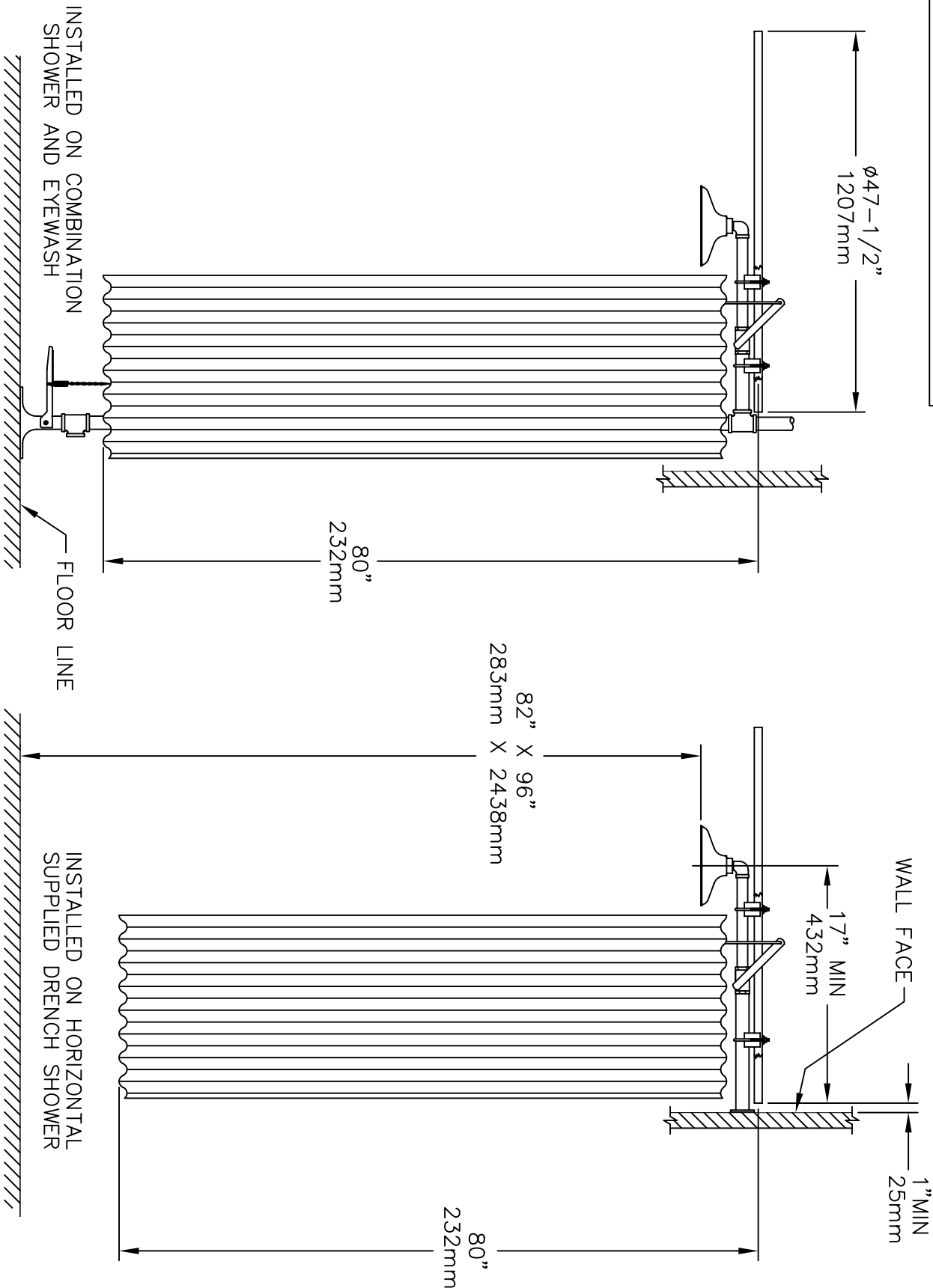
Shown Installed on 8300-8309

SPECIFICATIONS

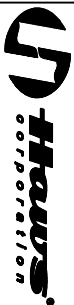
Model 9037 protects your personnel by providing shower privacy for removal of contaminated clothing with our easy-to-install privacy curtain. It is designed to be used on horizontal emergency drench shower or combination emergency drench shower and eyewash units. This tyvek yellow curtain can be installed on new or previously installed models. With a quick sweep of the hand on both sides, the curtain wraps around to enclose the shower and user. Durability is provided by the corrosion resistant curtain rod. Partial water containment is provided by the curtain which helps minimize the danger of equipment damage. Privacy gown is included in the pocket of the curtain. Curtain length: 78" (198.1 cm) diameter of Curtain Rod: 47-1/2" (120.6 cm).

APPLICATIONS





NOTE:
THE ANSI STANDARD SPECIFIES SHOWER HEAD
HEIGHT TO BE 82" (283mm) TO 96" (2438mm)
ABOVE THE FLOOR.



INFO FAX : 1-888-FAX-HAWS (1-888-329-4297)

1455 Kleppe Ln, Sparks NY, 89431
Phone: 775-359-4712 Fax: 775-359-7424

Haws 1455 Kleppe Ln, Sparks NY, 89431
Haws 1455 Kleppe Ln, Sparks NY, 89431

Haws 1455 Kleppe Ln, Sparks NY, 89431

Haws 1455 Kleppe Ln, Sparks NY, 89431

FOR NO.	9037	MODEL(S):	9037
DATE:	05/91	DATE:	05/91
CH:	05/91	CH:	05/91
APPROVED:		APPROVED:	
SCALE:	1/8"	SCALE:	1/8"
DRAWING TYPE:	INSTALLATION/BACK	DRAWING TYPE:	INSTALLATION/BACK
SIZE:	A	SIZE:	A
SHEET:	1	SHEET:	1
REV:	6	REV:	6
DRAWING NUMBER:	09446C00	DRAWING NUMBER:	09446C00