

FEATURES & BENEFITS

OPTIONS

To see all options for this model, visit www.hawesco.com

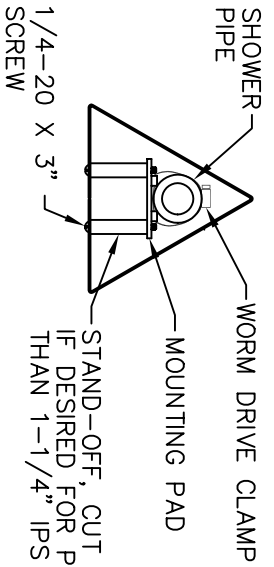


SPECIFICATIONS

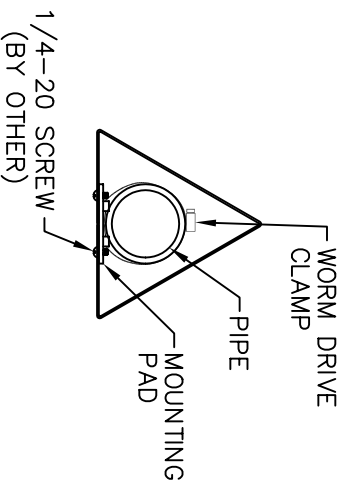
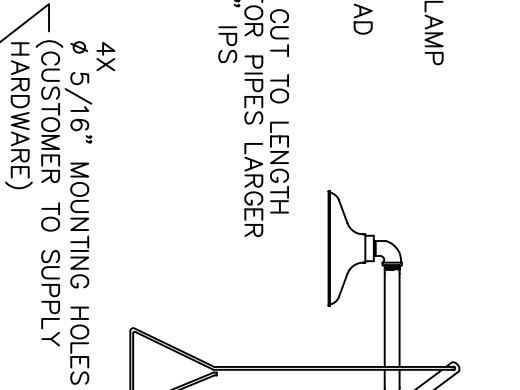
Model 9020 ABS plastic 3-sided sign is for use on Haws combination shower and eyewash units. This large yellow ABS plastic sign with Safety Green printed stripes is visible from multiple directions. Features universal pictorial of an emergency shower and eyewash. It can be mounted on a wall for 2 way visibility, or on a shower upright for 3 sided visibility. To be used only on combination shower and eyewash units.

APPLICATIONS

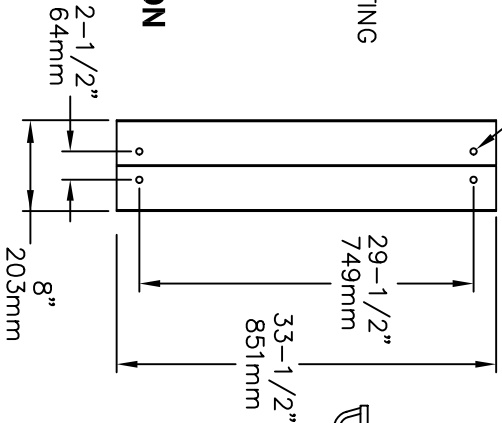




VIEW A-A
SCALE: 1/4
1-1/4" IPS MOUNTING



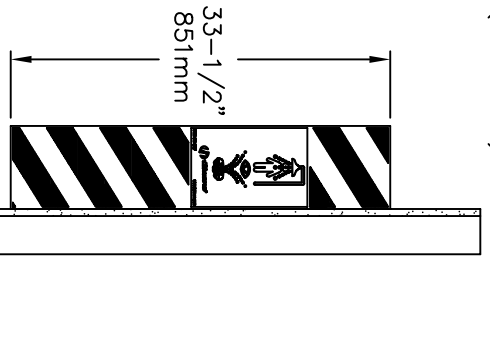
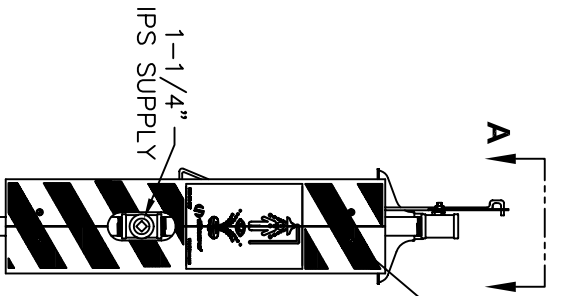
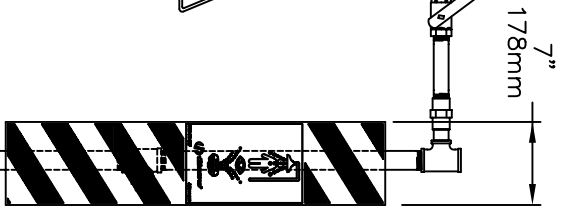
LARGE PIPE CONFIGURATION
SCALE: 1/4
3" IPS MOUNTING (MAX)



IMPORTANT
SIGN TO BE INSTALLED ONLY ON
EYEWASH/SHOWER COMBINATIONS

NOTES:

- ASSEMBLE BOTH CLAMPS AND MOUNTING PADS TO PIPE TO MATCH MOUNTING HOLE LOCATIONS BEFORE ATTACHING SIGN.



SHOWER MOUNTING
(SHOWN WITH MODEL 8200, ORDERED SEPERATELY)

WALL MOUNTING



1455 KLEPPE LANE
SPARKS, NEVADA 89431
(775) 359-4712 FAX (775) 359-7424
E-MAIL: HAWS@HAWS.CO.COM
WEBSITE: WWW.HAWS.CO.COM

EQN NO:	1	DESIGNED BY:	HW	MODEL(S):	9020	DATE:	11/94	REV:	5
ISSUED:	1	CHKD:	4381	HW	9020	DATE:	11/94	REV:	5
C/L:		APPROVED:		INCO FAX DOC #:	29020	DATE:		REV:	
SCALE:	1:1	GRABING TYPE:	INSTALLATION/FABR/CAB	DATE:		DATE:		REV:	
SIZE:	A	SHEET:	1	OF:	1	DATE:		REV:	