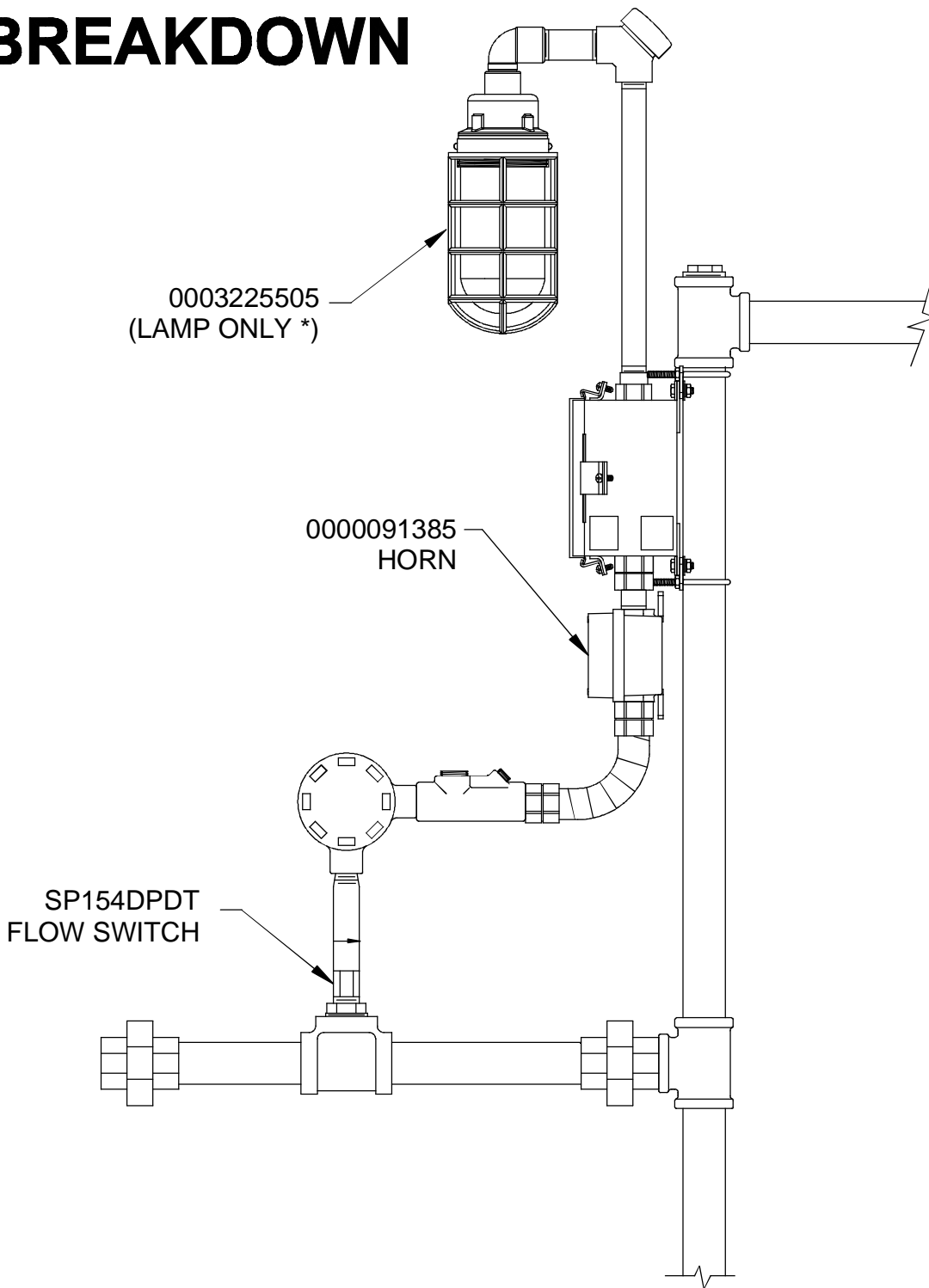



# PARTS BREAKDOWN



\* TEMPERATURE CODE IS AFFECTED BY LAMP WATTAGE.  
 RECOMMENDED 60 WATT LAMP YIELDS T2C (230 DEG C), 150 WATT  
 YIELDS T2 (300 DEG C).

 <b>Haws</b> <sup>®</sup>			1455 KLEPPE LANE SPARKS, NEVADA 89431 (775) 359-4712 FAX (755) 359-7424 E-MAIL: HAWS@HAWS.CO.COM WEBSITE: WWW.HAWS.CO.COM		
			ECN NO.	REVISED PER	BY
DRAWN	CLF	DATE	CHKD	9001EXP ALARM	0002080203
APPROVED	FV	DATE			
WHEN ORDERING PARTS PLEASE SPECIFY MODEL NUMBER.			SCALE: 1:1	DRAWING TYPE: PARTS BREAKDOWN	SIZE: A SHEET 1 OF 1