



# model 8720

## Outdoor Overhead Tank Combination Shower

### FEATURES & BENEFITS

#### CONSTRUCTION

Fiberglass encapsulated booth and tank, type 304 stainless steel pipe, and bronze valves eliminate corrosion and increase durability, strength and reliability for overall reduced lifetime costs. Third party Weather Tested and certified for harsh environments.

#### MODULAR DESIGN

Modular Design shipped to site already in stand up position with all electrical components including main disconnect and electrical quick disconnects. No need to try and "tilt" up on the job site. Easy to move from location to location with forklift and electrical quick connects. Meet OSHA requirements quicker on the job site and low labor/time to move and setup. Plug and play lets you get to work faster while being safer during install.

#### SUPERIOR SAFETY

Patent pending Flow Control Technology with Axion eye/face wash and shower using type 316 stainless steel valves that are easily activated. Exceeds ANSI constant flow requirements (17+ min @20 GPM with 450 gallon tank) with tepid water to an insulated booth that is heated to 70F creating a comfortable environment for the user.

#### CERTIFICATIONS

The only third party ANSI Z358.1 Certified Overhead Shower on the market, guaranteed to meet all flow, temp, and build requirements set forth by ANSI. Third Party Seismic Certified and Weather Tested. Wind and snow load compliant and freeze protected.

#### OTHER FEATURES

Spring loaded self-closing doors | Freeze Protected | Outdoor Rated Temperature Exposure -20F to 100F | 2.5 kW space heater in booth, entire unit is maintained at 70F for user comfort and freeze protection | Standard as 208/240V single phase, 3 wire, 40 amp circuit but available in all major voltages (480\575V 3Ø)

#### OTHER AVAILABLE CONFIGURATIONS

Class 1 Div 2 | Nema 4 and 4X standards | All Stainless Steel | Low Lead



### SPECIFICATIONS

Model 8720 Outdoor, Insulated Overhead Tank drench shower and eye/face wash within a heated and insulated fiberglass encapsulated booth. Includes dual spring-loaded, self-closing shower doors and trimmed with large directional arrows, large and small universal shower/eyewash signs, fiberglass floor grate, and 3" IPS drain. The internal booth temperature is maintained by a natural convection 2.5 kW space heater. The overhead 450 gallon (1703 L) tank is constructed of insulated fiberglass with water temperature controlled by immersion heating. The standard electrical system comes with main disconnect and requires 208/240VAC single phase, 3 wire, 40 amp minimum (other voltages available). Emergency flushing is provided by a patent pending flow control into a hydrodynamic drench shower and the medically superior AXION MSR eye/facewash. The entire system meets the ANSI Z358.1 standard for emergency eyewash and shower equipment.

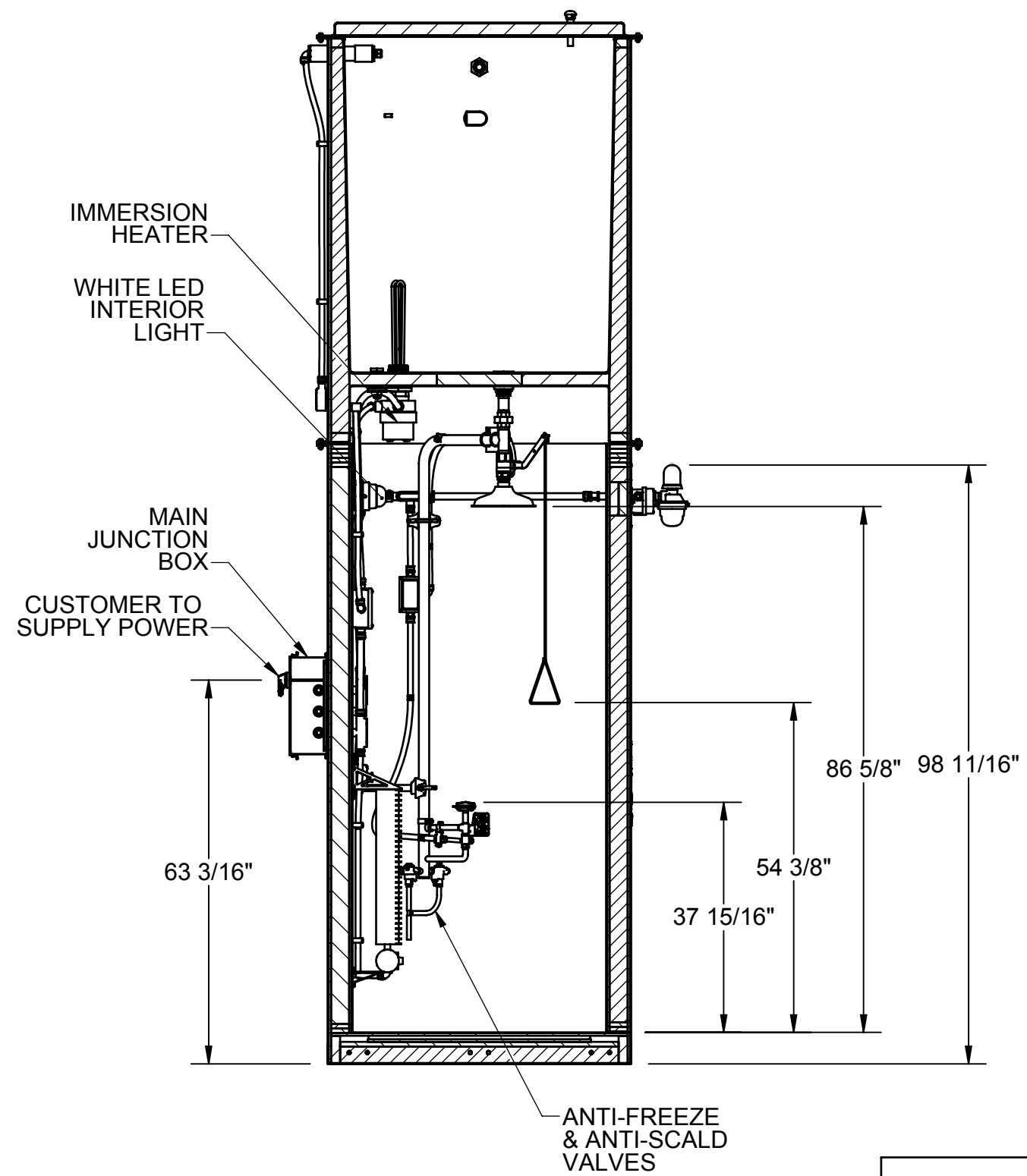
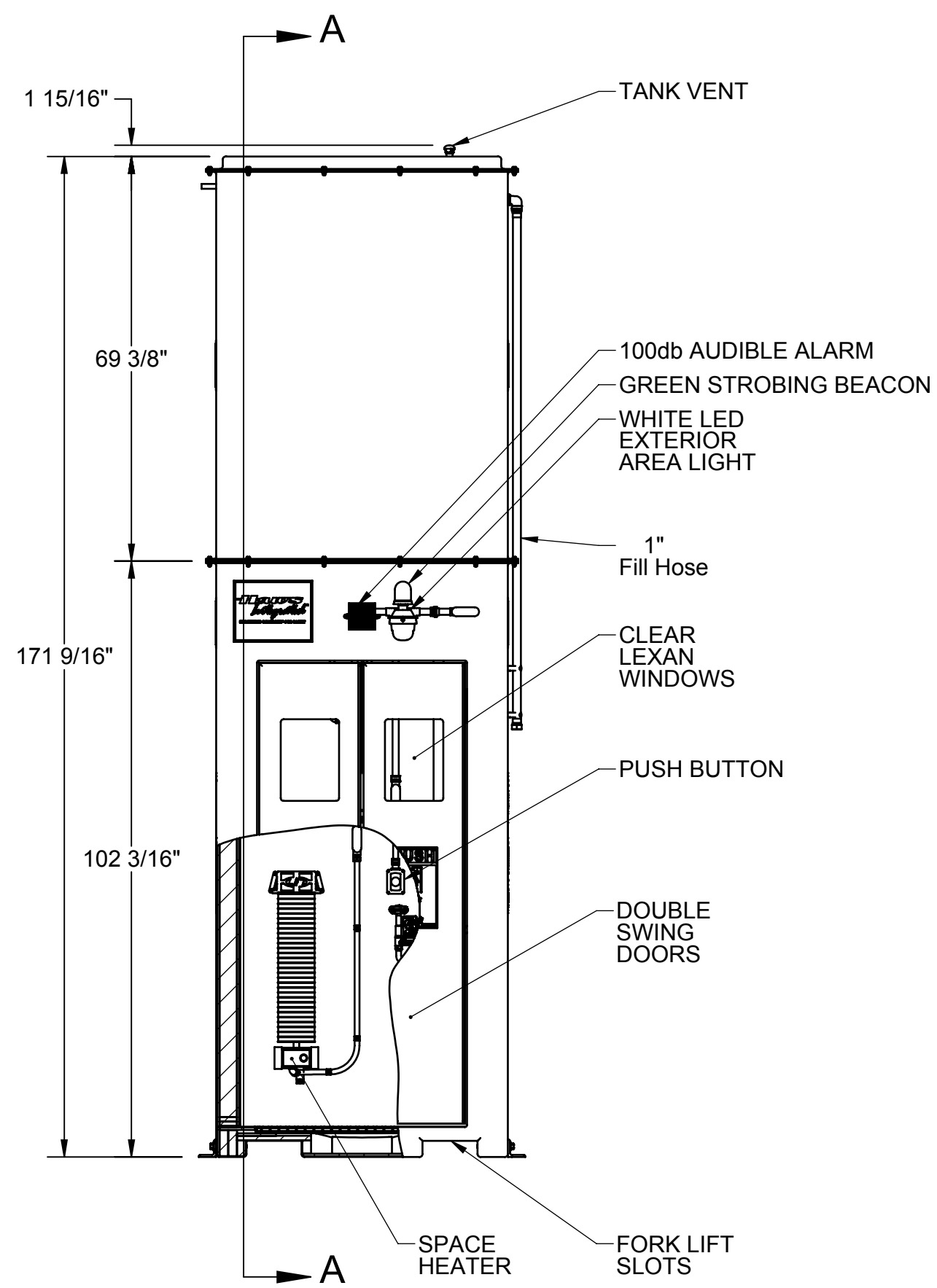
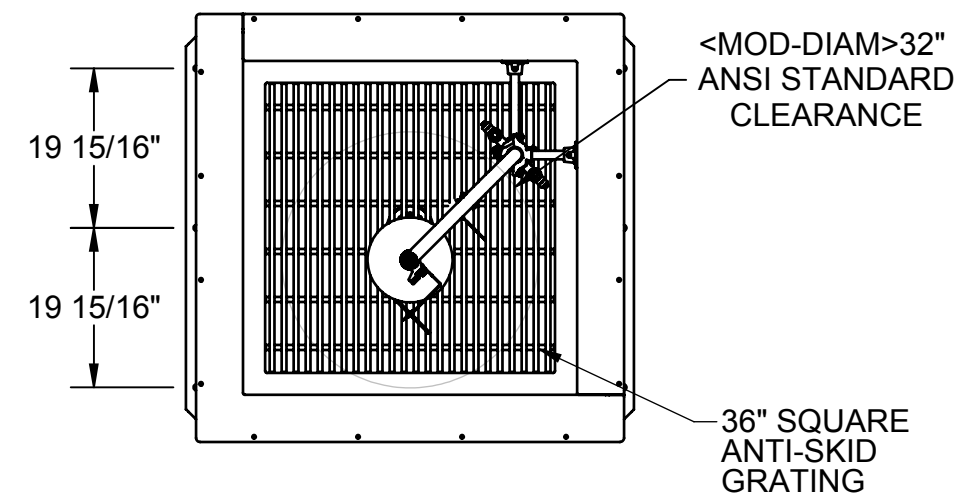
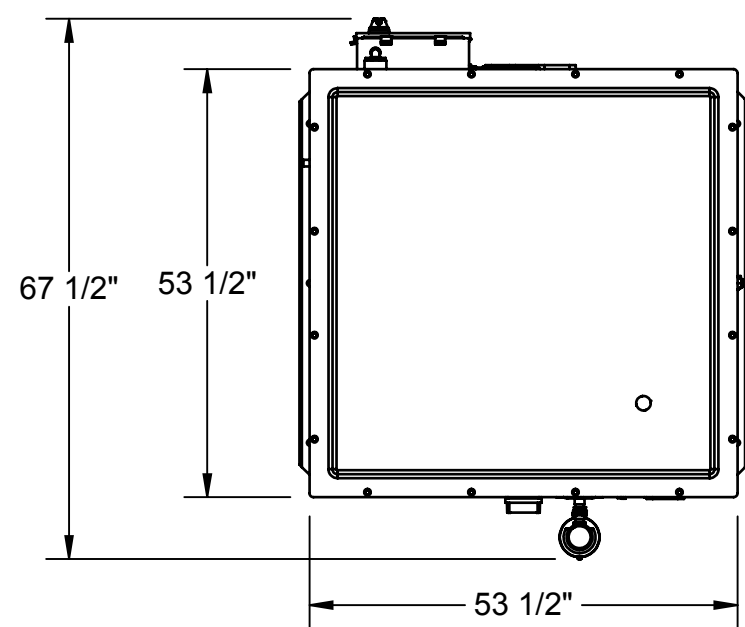
### APPLICATIONS

Perfect for mining, Petro-Chemical, bio-diesel, and ethanol processing facilities as well any other remote outdoor location without a potable water supply where a drench shower and eyewash are required.

### OPTIONS

To see all options for this model, visit [www.hawsco.com](http://www.hawsco.com)





SECTION A-A  
SCALE 1 : 24

BILL OF MATERIAL			
APPROVALS	DATE	1455 KLEPPE LANE SPARKS, NEVADA 89431 USA	
DRAWN			
CHECKED			
APPROVED			
CUSTOMER INFO/TAG #:		TITLE 8720 NEMA 4 ASSY	
NOTICE OF PROPRIETARY INFORMATION INFORMATION CONTAINED HEREIN IS THE SOLE PROPERTY OF HAWS CORPORATION AND THIS DOCUMENT AND THE DATA DISCLOSED HEREIN OR HEREWITH IS NOT TO BE REPRODUCED, USED, OR DISCLOSED IN WHOLE OR IN PART TO ANYONE WITHOUT THE PERMISSION OF HAWS CORPORATION.		THIRD ANGLE PROJECTION SHOP SH 1 OF 1 REV. 1	
SCALE	SIZE	PART NO.	8720 Full Options
1:32	C		