



model 8605WC

AXION® MSR Booth Enclosed Shower and Eye/Face Wash

FEATURES & BENEFITS

CONSTRUCTION

Reinforced molded fiberglass booth provides a solid free standing enclosed environment for added privacy and stability. Unit also comes equipped with galvanized steel floor grate for wheel chair access while offering proper waste drainage.

QUALITY CONTROL

Entire unit is pre-built and pressure tested to ensure a leak free installation.

BARRIER-FREE ACCESS

Barrier-free design offers a low profile eyewash assembly and a longer shower pull rod allowing for wheelchair access.

VALVES

Eye/face wash and shower ball valves are designed to make the flushing of fluid remains occur with the simple pull of a lever or push of a stainless steel flag.

SHOWER HEAD

AXION® MSR ABS plastic drench showerhead uses a hydrodynamic design to give equal distribution of water throughout the entire footprint of flow.

EYE/FACE WASH

AXION® MSR eye/face wash head (patent pending) uses an inverted directional laminar flow to sweep contaminants away from the vulnerable nasal cavity.



SPECIFICATIONS

Model 8605WC barrier-free combination shower and eye/face wash booth shall include an AXION® MSR eye/face wash head shall feature inverted directional laminar flow which achieves zero vertical velocity supplied by an integral flow control. Unit shall also include the AXION MSR hydrodynamic designed ABS plastic showerhead with flow control, wheelchair accessibility, chrome-plated brass stay-open shower and eyewash ball valves equipped with stainless steel ball and stem, a white reinforced molded fiberglass booth, galvanized steel floor grate, universal signs, 1" IPS supply, and 3" IPS caulk floor drain.

OPTIONS

- Test Tag: SP170 is a green waterproof test card with space for date and initials of inspector. Used to record weekly testing of emergency equipment.
- Thermostatic Mixing Valve: Model 9201E AXION® Emergency Tempering Valve thermostatically mixes hot and cold water to provide a safe fluid supply for emergency showers and eyewash equipment, with a flow rate of 31 gpm (117.3 L).
- Emergency Alarm System: Model 9001, 1-1/4" 120 VAC emergency alarm and light system. Buzzer and flashing light are activated by an 1-1/4" double pole, double throw flow switch.
- Emergency Alarm System: Model 9001EXP 120 VAC Class 1, Division 2, Groups B, C, and D emergency alarm system. Buzzer and flashing light are activated by an 1-1/4" IPS double pole, double throw flow switch.

To see all options for this model, visit www.hawasco.com

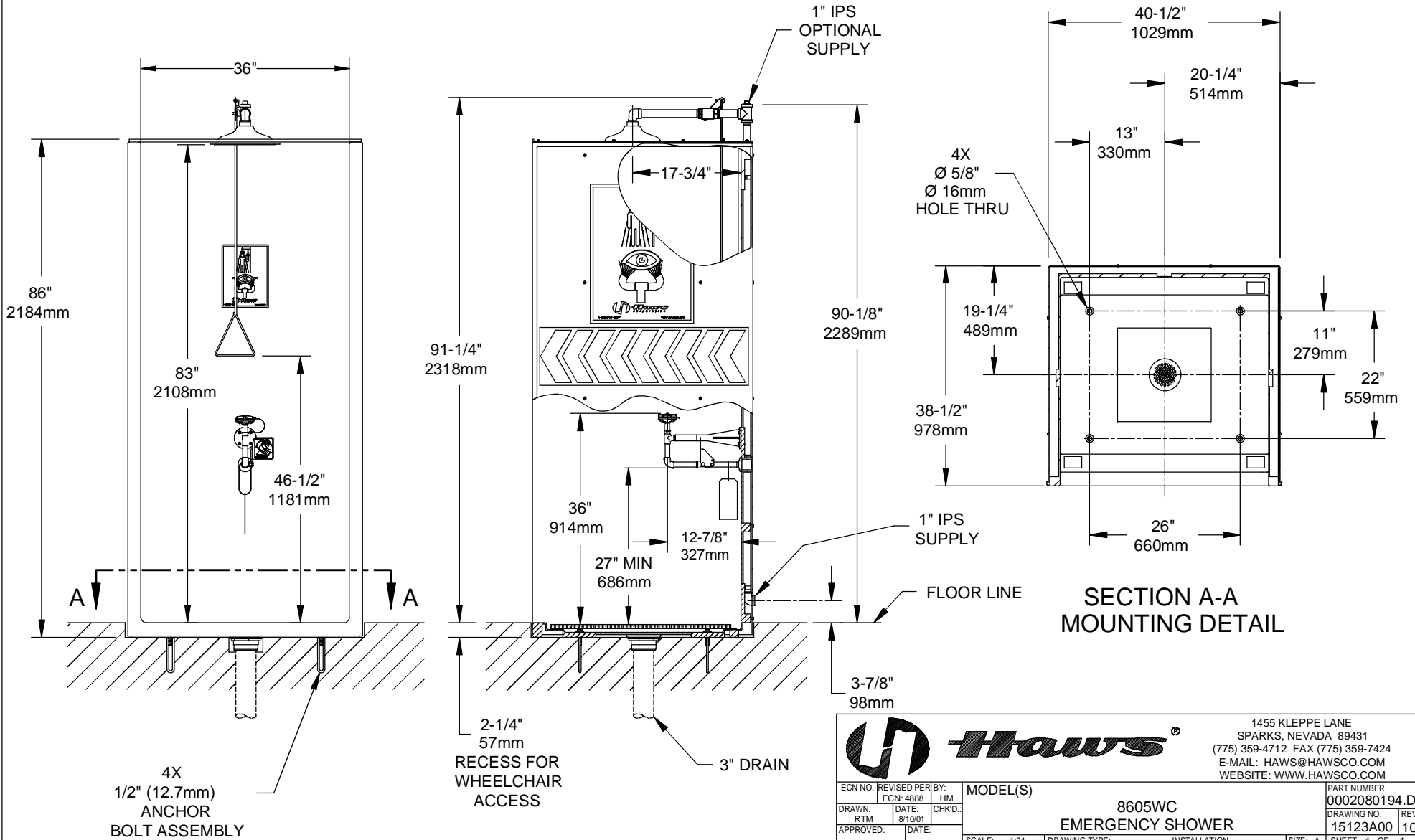
APPLICATIONS

Where the eyes, face, or body of any person may be exposed to injurious or corrosive materials, suitable facilities for quick drenching or flushing of the eyes, face, and body shall be provided within the work area for immediate emergency use. Emergency eye/face wash facilities and deluge showers shall be in unobstructed and accessible locations that require no more than 10 seconds for the injured person to reach. Model 8605WC is certified by CSA to meet the ANSI Z358.1 Standard for Emergency Eyewash and Shower Equipment.



NOTES:

1. DIMENSIONS MAY VARY BY ± 1/2 INCH [13mm].
2. TO COMPLY WITH ANSI Z358.1-2009 FOR EMERGENCY EYEWASH OR EYE/FACE WASH AND SHOWER EQUIPMENT:
 - UNIT SHALL BE INSTALLED IN ACCORDANCE WITH MANUFACTURER'S INSTRUCTIONS AND ACCEPTABLE PLUMBING PRACTICES.
 - EYEWASH OR EYE/FACE WASH SHALL BE POSITIONED WITH NOZZLES NOT LESS THAN 83.8 CM (33 IN.) AND NO GREATER THAN 114.3 CM (45 IN.) FROM SURFACE ON WHICH USER STANDS AND 15.3 CM (6 IN.) MINIMUM FROM WALL OR NEAREST OBSTRUCTION.
 - SHOWER SHALL BE POSITIONED SO THAT SHOWER HEAD IS NOT LESS THAN 208.3 CM (82 IN.) NOR MORE THAN 243.8 CM (96 IN.) FROM SURFACE ON WHICH USER STANDS.
 - SHOWER SPRAY PATTERN SHALL HAVE A MINIMUM DIAMETER OF 50.8 CM (20 IN.) AT 152.4 CM (60 IN.) ABOVE SURFACE ON WHICH USER STANDS, AND CENTER OF SPRAY PATTERN SHALL BE LOCATED AT LEAST 40.6 CM (16 IN.) FROM ANY OBSTRUCTION.
3. FLOW RATE FOR EYE/FACE WASH IS 3.7 GPM AND 1.32 GPM FOR EYEWASH CONVERSION. BOTH EXCEED ANSI Z358.1-2009 STANDARD.



Haws[®]

1455 KLEPPE LANE
SPARKS, NEVADA 89431
(775) 359-4712 FAX (775) 359-7424
E-MAIL: HAWS@HAWS.CO.COM
WEBSITE: WWW.HAWS.CO.COM

| | | |
|-------------------------|----------------------------|----------------------|
| ECN NO. REVISED PER BY: | MODEL(S) | PART NUMBER |
| ECN: 4888 HM | 8605WC | 0002080194.D |
| DRAWN: RTM | DATE: 8/10/01 | DRAWING NO. REV |
| APPROVED: DATE: | EMERGENCY SHOWER | 15123A00 10 |
| SCALE: 1:24 | DRAWING TYPE: INSTALLATION | SIZE: A SHEET 1 OF 1 |