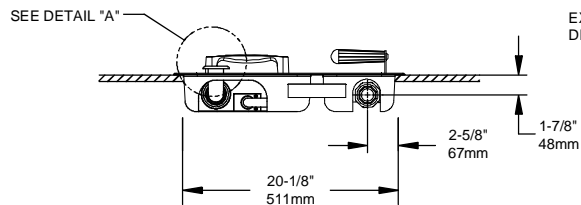
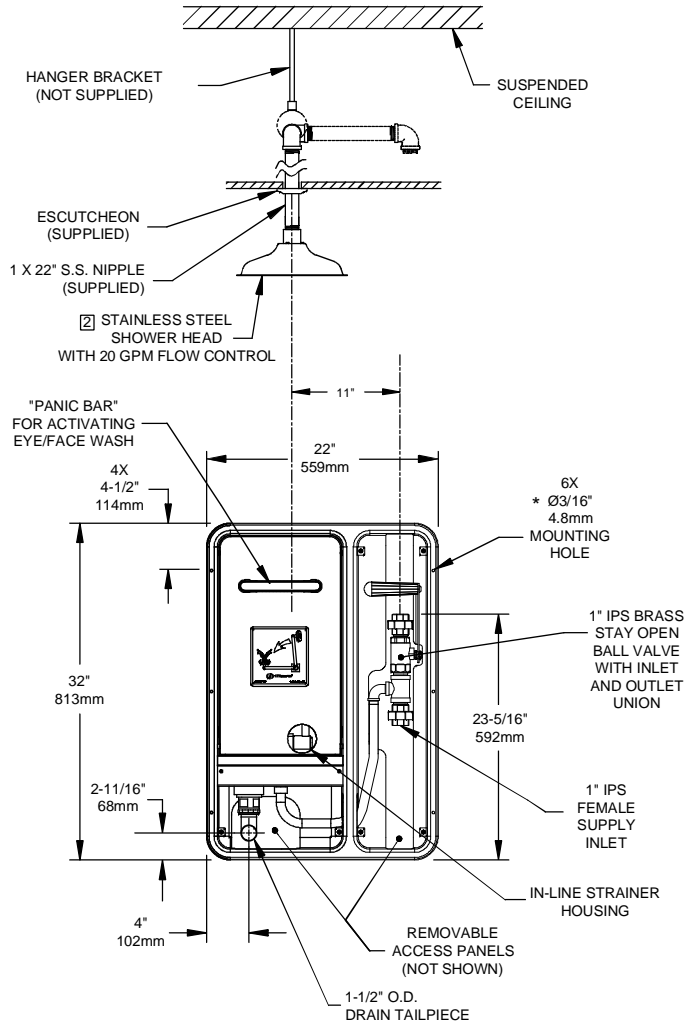


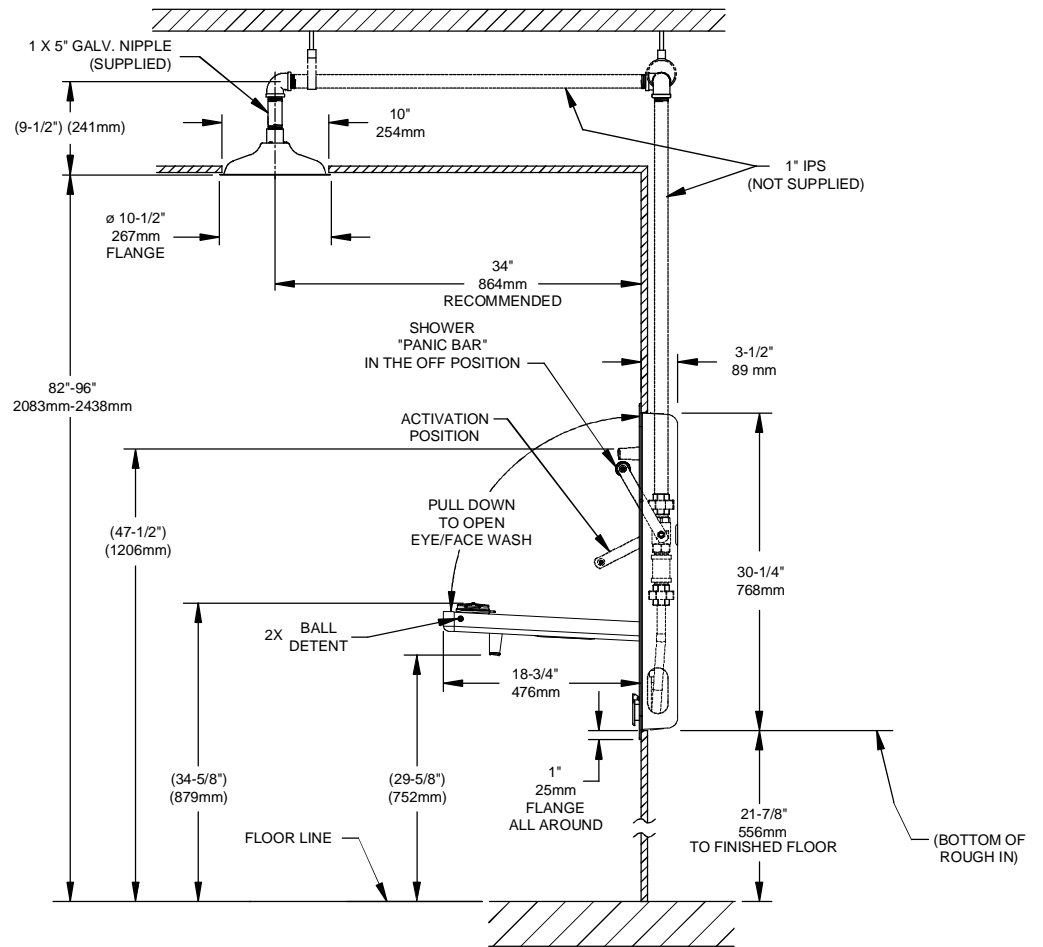
OPTIONAL SHOWER HEAD INSTALLATION



DETAIL "A" ROTATED FOR CLARITY

NOTES:

1. WHEN INSTALLING THIS UNIT, LOCAL, STATE OR FEDERAL CODES SHOULD BE ADHERED TO. WASTE CONNECTION MUST ADHERE TO LOCAL HEALTH AND PLUMBING CODES.
2. SHOWER HEAD MUST BE POSITIONED IN-LINE WITH EYE/FACEWASH HEAD TO ALLOW FOR SIMULTANEOUS USE BY THE SAME USER PER ANSI Z358.1.
3. FLOW RATE FOR EYE/FACE WASH IS 3.7 GPM AND EXCEEDS ANSI STANDARD Z358.1.
4. DIMENSIONS MAY VARY BY ± 1/2" [12.7mm].
- * 5. MOUNTING HARDWARE NOT SUPPLIED.



		1455 KLEPPE LANE SPARKS, NEVADA 89431 (775) 359-4712 FAX (775) 359-7424 E-MAIL: HAWS@HAWS.CO.COM WEBSITE: WWW.HAWS.CO.COM	
		ECN NO: 4230 DRAWN: I. ROBERTS APPROVED:	REVISED PER: JF ECN: 4842 DATE: 7/12/10
SCALE: 1/18		DRAWING TYPE: INSTALLATION	SIZE: A SHEET 1 OF 1

FIGURE NO. 15915A00