



**INSTALLATION, OPERATION
&
MAINTENANCE INSTRUCTIONS**

1455 Kleppe Lane ♦ Sparks, NV 89431-6467 ♦ (775) 359-4712 ♦ Fax (775) 359-7424
E-mail: haws@hawsco.com ♦ website: www.hawsco.com

No. 2080083(3)

**Model 7656WCSM
Eye/face Wash**

NOTE TO INSTALLER: Please leave this information with the Maintenance Department.

LIMITED WARRANTY

HAWS warrants that this specific product is guaranteed against defective material or poor workmanship for a period of **one year from date of shipment**. HAWS liability under this warranty shall be discharged by furnishing without charge F.O.B. HAWS Factory any goods, or part thereof, which shall appear to the Company upon inspection to be of defective material or not of first class workmanship, provided that claim is made in writing to Haws within a reasonable period after receipt of the product. Where claims for defects are made, the defective part or parts shall be delivered to the Company, prepaid, for inspection. HAWS will not be liable for the cost of repairs, alterations or replacements, or for any expense connected therewith made by the owner or his agents, except upon written authority from HAWS, Sparks, Nevada. HAWS will not be liable for any damages caused by defective materials or poor workmanship, except for replacements, as provided above. Buyer agrees that Haws has made no other warranties either expressed or implied in addition to those above stated, except that of title with respect to any of the products or equipment sold hereunder and that HAWS shall not be liable for general, special, or consequential damages claimed to arise under the contract of sale.

The emergency equipment manufactured by HAWS is warranted to function if installation and maintenance instructions provided are adhered to. The units also must be used for the purpose for which they were intended. This product is intended to supplement first-aid treatment. Due to widely varying conditions, Haws cannot guarantee that the use of this emergency equipment will prevent serious injury or the aggravation of existing or prior injuries.

NO OTHER WARRANTIES EXPRESSED OR IMPLIED ARE AUTHORIZED, PROVIDED OR GIVEN BY HAWS.

SHOULD YOU EXPERIENCE DIFFICULTY WITH THE INSTALLATION OF THIS MODEL PLEASE CALL:

TECHNICAL SUPPORT: 1-800-766-5612

FOR CUSTOMER SERVICE: 1-888-640-4297

RECOMMENDED TOOLS: Adjustable wrench, pipe wrench, pipe joint sealant, Phillips screw driver, 1/4" hex key wrench.

LOCATION OF UNIT: The Model 7656WCSM eye/face wash should be installed in close proximity to potential accident areas. It should be clearly identified free from obstructions and easy to access. See ANSI Z358.1 guidelines for more information.

SUPPLY LINE: The minimum recommended line size is 1/2" IPS with 30-90 psi (2-6 ATM) flowing pressure at supply inlet. Where sediment or mineral content is a problem, an inlet filter is recommended.

PLUMBING CONNECTIONS: Inlet supply is male 1/2" IPS; waste is 2" IPS.

INSTALLATION PROCEDURE

Refer to installation drawing for clarification. Check parts list to ensure all required parts are included.

1. Install all items at dimensions shown in installation drawing.
2. Each unit is factory preset to meet the 5 pound (22.2 N) maximum activation force requirement for disabled persons. If adjustment is required after installation, follow the adjustment directions below.
 - a) Locate the two ball detents, one on each side of the eyewash tray. See installation drawing.
 - b) Using a flat screwdriver, adjust each ball detent to make slight contact with the eyewash housing just before the ball detent snaps into its locating position on the housing.
 - c) Once both ball detents are adjusted as above, tighten each ball detent 1/4 turn.
 - d) Using a force gauge, ensure the force required to open the eyewash unit does not exceed 5 pounds (22.2 N).

CLEANING INSTRUCTIONS FOR STAINLESS BEAD-BLASTED PRODUCTS

Haws recommended cleaning procedure for stainless bead-blasted products is as follows:

1. Use a stainless steel polish and cleaner for removing stains and finger prints.
2. Spray cleaner onto stainless surfaces and wipe dry with clean cloth. Cleaned surface will resist new stains and fingerprints.

INCLUDED PARTS

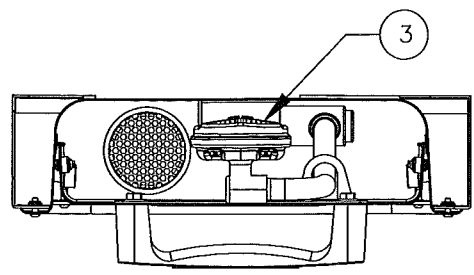
MODEL PACKAGE	QUANTITY	ITEMS INCLUDED
7656WCSM	1	Mounting Frame/Eyewash assembly
	1	Surface Mount Frame
	1	Emergency Eyewash Sign
	1	Test Tag

TROUBLESHOOTING	
PROBLEM	REPAIR CHECKLIST
1. No flow.	1. Check the main shut-off valve.
2. Insufficient water flow at eye/face wash.	2. a. Verify minimum 30 psi flowing supply line pressure. b. Probable clogging of flow control due to inadequate line flushing. Unscrew eye/face wash heads and remove the four screws to disassemble head. Clean flow control and reassemble head. c. Remove cap located on in-line strainer housing using a ¼" Allen wrench to access and clean filter screen. See installation drawing for location.
3. Eye/face wash streams do not meet desired eye level.	3. a. Possible blocked flow control, see above solution. b. Possible non-leveled eye/face wash assembly.
4. Tray too hard to open or does not stay closed.	4. See "Installation Procedure" Step 2.

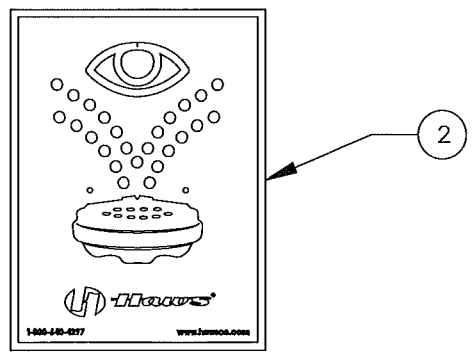
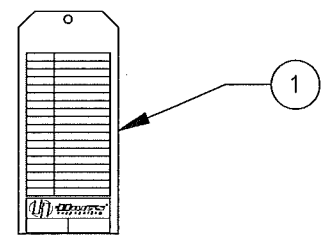
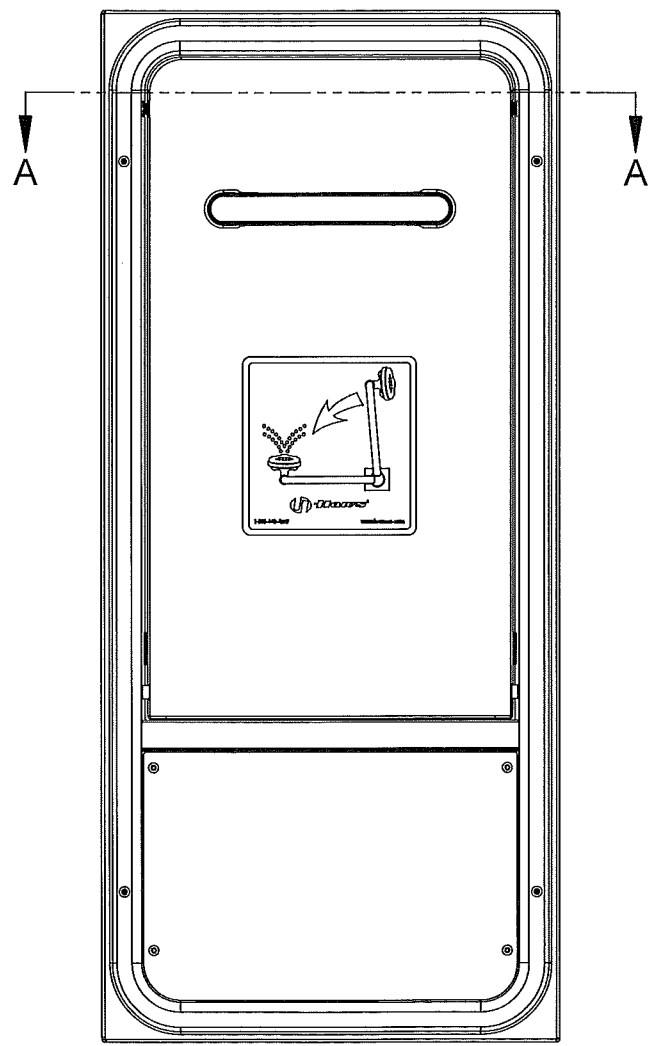
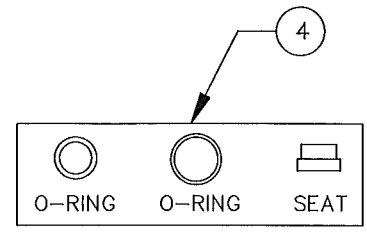
For more information about Haws products, see our website: www.hawsc.com.


ITEM	DESCRIPTION
1	SP170 TEST TAG
2	SP175 EYEWASH SIGN
3	SP65PD EYE/FACEWASH HEAD
4	VRK7650 VALVE REPAIR KIT

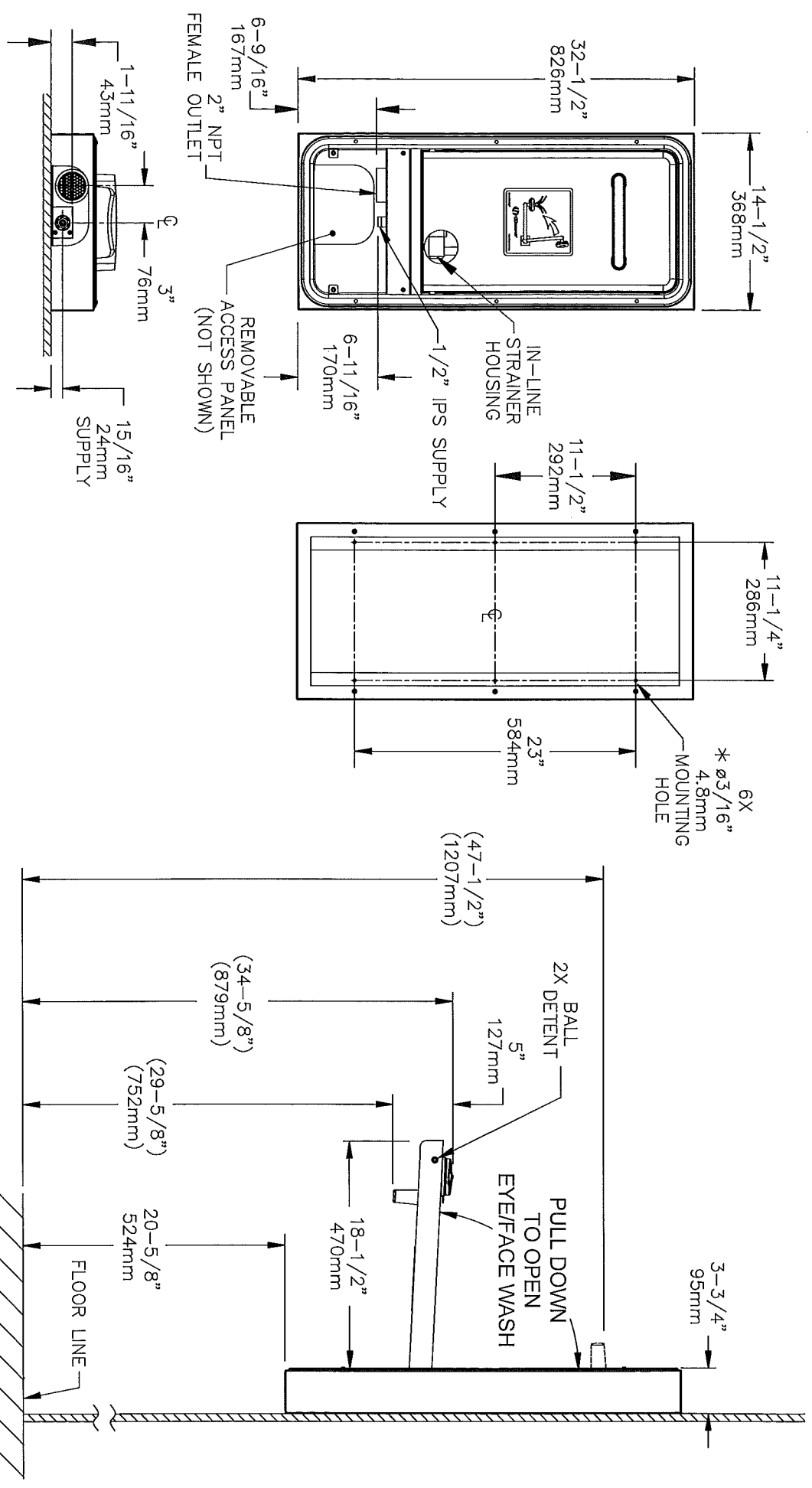
PARTS BREAKDOWN



SECTION A-A



 Haws [®]		1455 KLEPPE LANE SPARKS, NEVADA 89431 (775) 359-4712 FAX (775) 359-7424 E-MAIL: HAWS@HAWSCO.COM WEBSITE: WWW.HAWSCO.COM	
		ECN NO. 4290 REVISED PER: PE ECN: 4842 DATE: CHRO DRAWN: I. ROBERTS DESIGNED: J. SMITH APPROVED: [Signature] DATE:	MODEL(S) 7656WCSM
WHEN ORDERING PARTS PLEASE SPECIFY YOUR MODEL NUMBER			DRAWING NO.: 15910A00 REV: 3
SCALE: 1/3 DRAWING TYPE: PARTS BREAKDOWN		SIZE: A SHEET: 1 OF 1	



NOTES:

1. WHEN INSTALLING THIS UNIT, LOCAL, STATE OR FEDERAL CODES SHOULD BE ADHERED TO. WASTE CONNECTION MUST ADHERE TO LOCAL HEALTH AND PLUMBING CODES.
2. FLOW RATE FOR EYE/FACE WASH IS 3.7 GPM AND EXCEEDS ANSI STANDARD Z358.1.
3. DIMENSIONS MAY VARY BY ± 1/2" [12.7mm].
- *4. MOUNTING HARDWARE NOT SUPPLIED.

Haus

1456 KLEPPE LANE
SPARKS, NEVADA 89431
(775) 358-4712 FAX (775) 399-7424
E-MAIL: HAUS@HAUSCO.COM
WEBSITE: WWW.HAUSCO.COM

ECN NO. REVISED PER BY: MODEL(S)
4520 ECN: 4842 PE: 7656WC5M

DRAWING NO.: 15909A00
REV: 3

DATE: 01/11/11
APPROVER: [Signature]

SCALE: 1/12
DRAWING TYPE: INSTALLATION
SIZE: A
SHEET: 1 OF 1