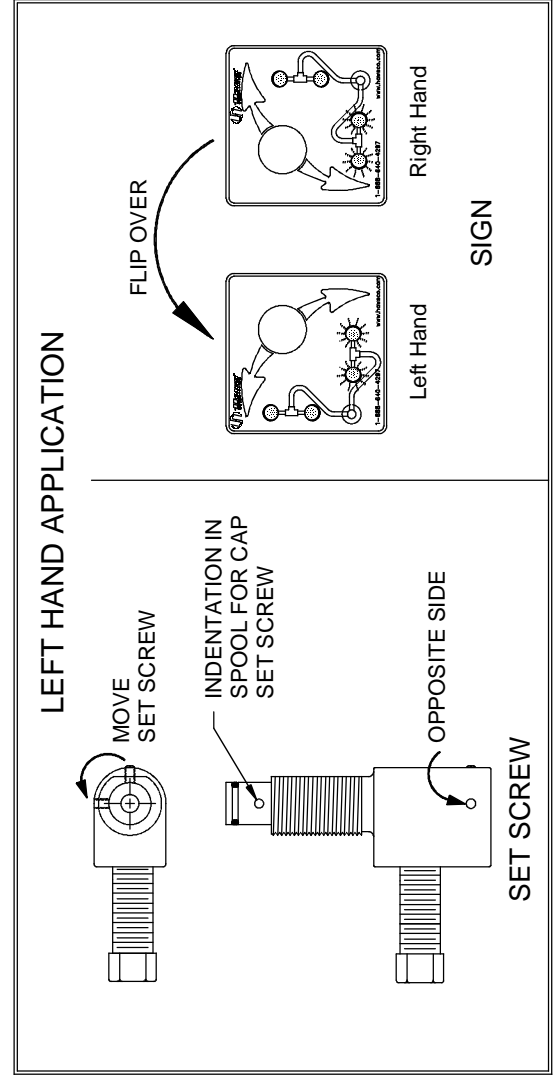
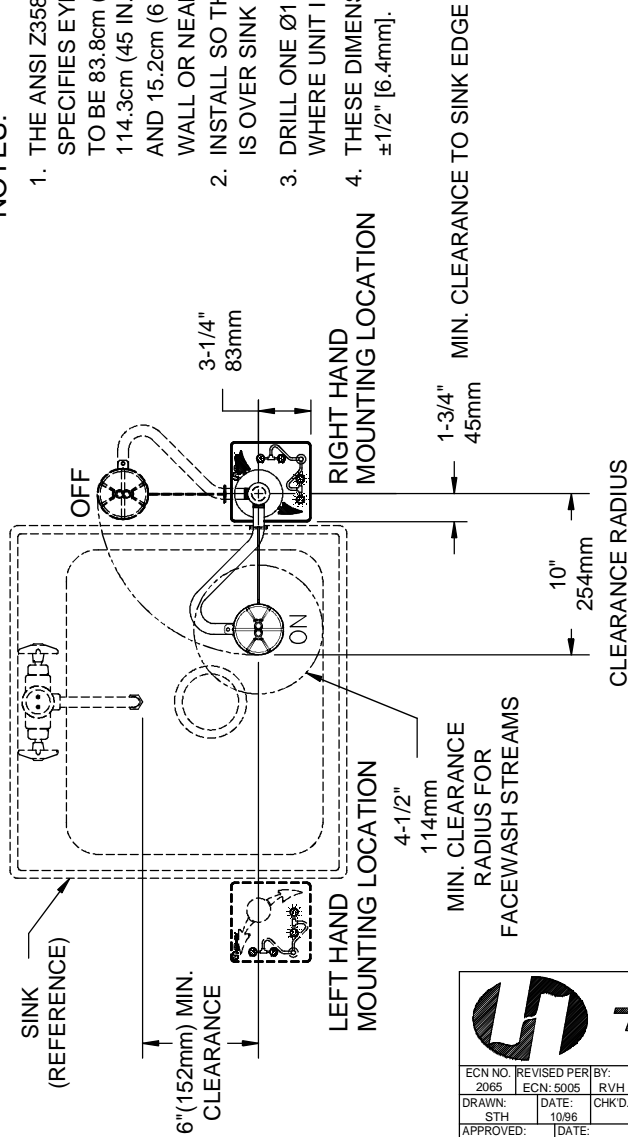
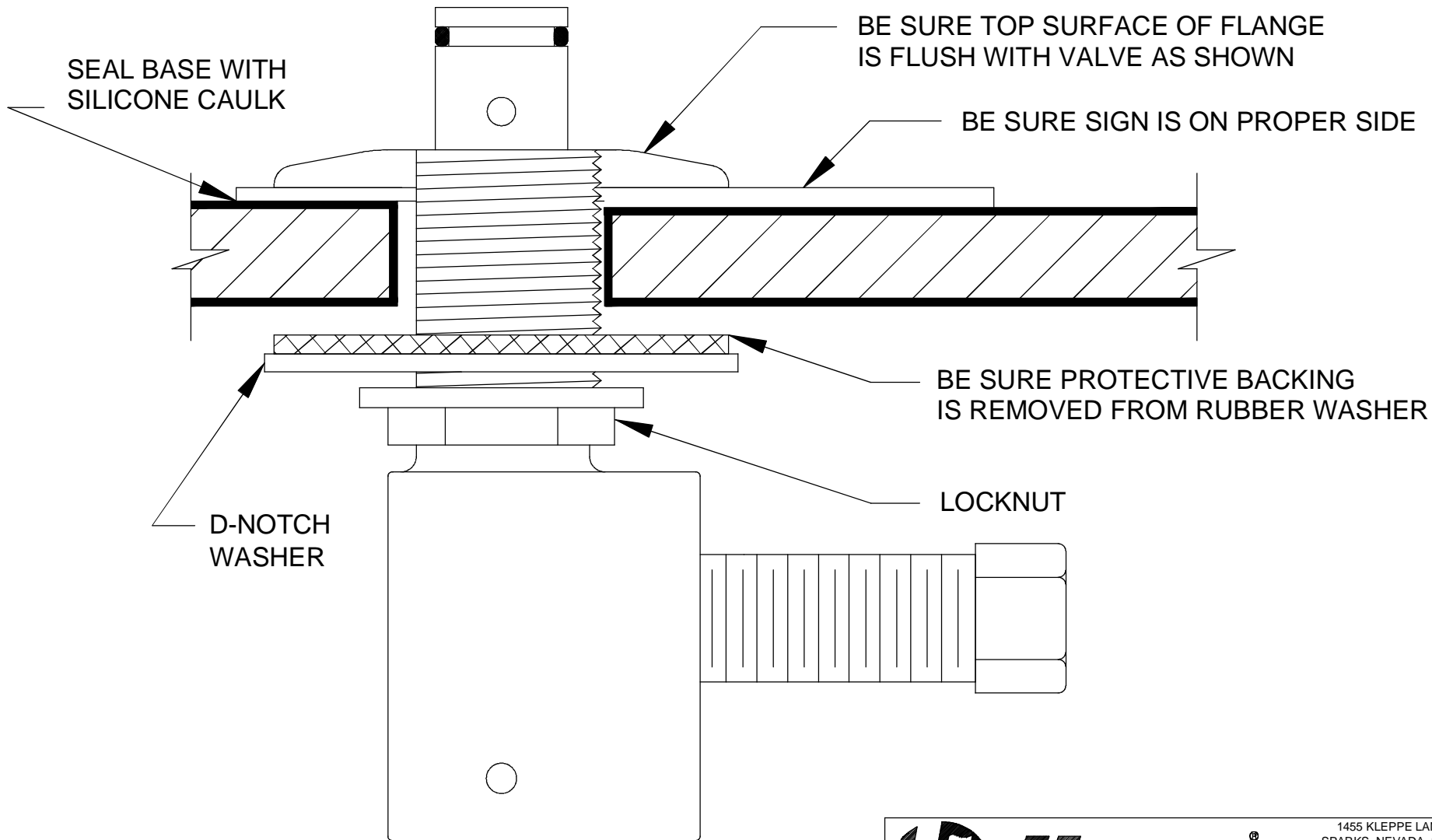



**NOTES:**

1. THE ANSI Z358.1-2009 STANDARD SPECIFIES EYEWASH NOZZLE HEIGHTS TO BE 83.8cm (33 IN.) TO 114.3cm (45 IN.) ABOVE THE FLOOR AND 15.2cm (6 IN.) MINIMUM FROM WALL OR NEAREST OBSTRUCTION.
2. INSTALL SO THAT EYEWASH HEAD IS OVER SINK WHEN ACTIVATED.
3. DRILL ONE Ø1-3/8" [35mm] HOLE WHERE UNIT IS TO BE INSTALLED.
4. THESE DIMENSIONS MAY VARY ±1/2" [6.4mm].



		1455 KLEPPE LANE SPARKS, NEVADA 89431 (775) 359-4712 FAX (775) 359-7424 E-MAIL: HAWS@HAWSCO.COM WEBSITE: WWW.HAWSCO.COM	
ECN NO. 2065 DRAWN: STJ APPROVED: FV	REVISED PER: ECN: 5005 DATE: 10/96 DATE: 06/25/15	BY: RVH CHKD.: MODEL(S) 7611 DECK MTD SWING AWAY E/W	PART NUMBER: 0002080063.D DRAWING NO.: 12621A00 REV: 8 SHEET 1 OF 2
SCALE: 1:1		DRAWING TYPE: INSTALLATION	



 <b>Haws</b> <sup>®</sup>		1455 KLEPPE LANE SPARKS, NEVADA 89431 (775) 359-4712 FAX (775) 359-7424 E-MAIL: HAWS@HAWS.CO.COM WEBSITE: WWW.HAWS.CO.COM	
		ECN NO. REVISED PER BY: ECN: 5006 HM DRAWN: STH DATE: 10/06 CHKD.: RVH APPROVED: FV DATE: 06/25/15	MODEL(S)  7611 DECK MTD SWING AWAY E/W
SCALE: 1:1		DRAWING TYPE: INSTALLATION	SIZE: A SHEET 2 OF 2