



# INSTALLATION, OPERATION & MAINTENANCE INSTRUCTIONS

1455 Kleppe Lane ♦ Sparks, NV 89431-6467 ♦ (775) 359-4712 ♦ Fax (775) 359-7424  
E-mail: [haws@hawsco.com](mailto:haws@hawsco.com) ♦ website: [www.hawsco.com](http://www.hawsco.com)

No. 2080067(14)

## Model 7610 Eye/Face Wash

**NOTE TO INSTALLER: Please leave this information with the Maintenance Department.**

### LIMITED WARRANTY

HAWS warrants that this specific product is guaranteed against defective material or poor workmanship for a period of **one year from date of shipment**. HAWS liability under this warranty shall be discharged by furnishing without charge F.O.B. HAWS Factory any goods, or part thereof, which shall appear to the Company upon inspection to be of defective material or not of first class workmanship, provided that claim is made in writing to Haws within a reasonable period after receipt of the product. Where claims for defects are made, the defective part or parts shall be delivered to the Company, prepaid, for inspection. HAWS will not be liable for the cost of repairs, alterations or replacements, or for any expense connected therewith made by the owner or his agents, except upon written authority from HAWS, Sparks, Nevada. HAWS will not be liable for any damages caused by defective materials or poor workmanship, except for replacements, as provided above. Buyer agrees that Haws has made no other warranties either expressed or implied in addition to those above stated, except that of title with respect to any of the products or equipment sold hereunder and that HAWS shall not be liable for general, special, or consequential damages claimed to arise under the contract of sale.

The emergency equipment manufactured by HAWS is warranted to function if installation and maintenance instructions provided are adhered to. The units also must be used for the purpose for which they were intended. This product is intended to supplement first-aid treatment. Due to widely varying conditions, Haws cannot guarantee that the use of this emergency equipment will prevent serious injury or the aggravation of existing or prior injuries.

**NO OTHER WARRANTIES EXPRESSED OR IMPLIED ARE AUTHORIZED, PROVIDED OR GIVEN BY HAWS.**

**SHOULD YOU EXPERIENCE DIFFICULTY WITH THE INSTALLATION OF THIS MODEL PLEASE CALL:**

**TECHNICAL SUPPORT: 1-800-766-5612**

**FOR CUSTOMER SERVICE: 1-888-640-4297**

**LOCATION OF UNIT:** The Model 7610 Eye/Face wash should be installed in close proximity to potential accident areas. It should be clearly identified, free from obstructions and easy to access.

**SUPPLY LINE:** The minimum recommended line size is 1/2" IPS with 30-90 psi (2-6 ATM) pressure. Where sediment or mineral content is a problem, an inlet filter is recommended.

**PLUMBING CONNECTIONS:** Inlet supply is 1/2" O.D. slip joint.

## INSTALLATION INSTRUCTIONS

**NOTES:** Instructions apply to both models unless otherwise specified.

Refer to installation drawings to clarify installation procedure.

This product is shipped assembled for use as a 7610 Deck Mounted Eyewash. To convert to 7610 Wall Mounted Eyewash, follow steps 1 and 2 below and refer to diagrams on page 6 of 6. Otherwise, skip to Step 3.

**STEP 1:** Position arm in "Deck Mount Off Position" as shown in Step 1 on page 6 of 6.

**STEP 2:** Note depth of set screw (referenced during reassembly). Loosen set screw from cap with 3/32" hex wrench. Rotate eyewash arm 90 degrees clockwise while making sure to not rotate the spool. Ensure that set screw is aligned with indent before tightening the set screw in the new arm position. Make sure the set screw is tight and at its original depth. If the set screw is too shallow, this is an indication that it has not properly engaged its indent and the eyewash will not function properly. Ensure correct arm orientation before proceeding with installation instructions outlined below. See Page 6 of 6 for reference drawings.

**STEP 3:** Remove the 1.25 O.D. flange nut and washer from valve body.

**STEP 4:** After making sure that the surfaces around the drilled hole are clean and free of grease, slide valve through drilled hole.

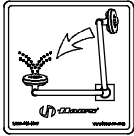
**STEP 5:** Reinstall the 1.25" O.D. flange nut and washer. Connect slip joint connection to complete installation.

**STEP 6:** Assemble eye/face wash assembly to arm, orient tab on assembly away from user.

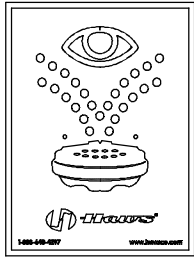
<b>TROUBLESHOOTING</b>	
<b>PROBLEM</b>	<b>REPAIR CHECKLIST</b>
1. No flow.	1. Check the main shut-off valve.
2. Insufficient water flow.	2. a. Verify minimum 30 psi (2 ATM) flowing supply line pressure. b. Probable clogging of flow control due to inadequate line flushing. Unscrew eye/face wash head and remove the four screws to disassemble head. Clean flow control and reassemble head.
3. Eyewash stream does not meet desired eye level.	3. a. Possible blocked flow control, see above solution. b. Possible non-leveled eyewash assembly.

For more information about Haws products, see our website: [www.hawesco.com](http://www.hawesco.com)

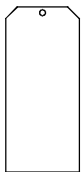
# PARTS BREAKDOWN



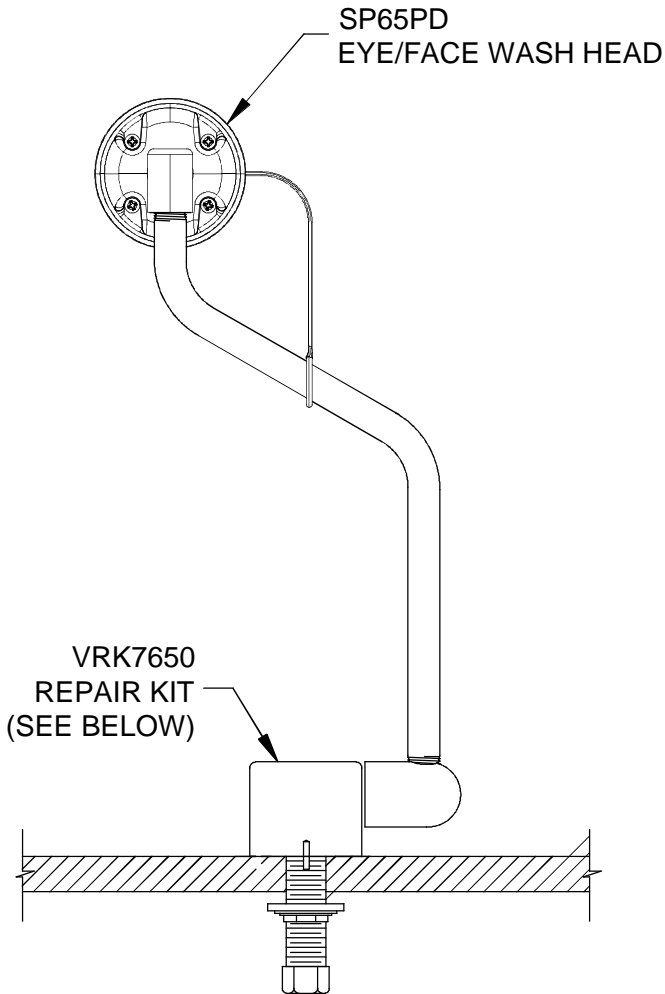
PULLDOWN EYE/FACE WASH LABEL  
P/N 0003163821



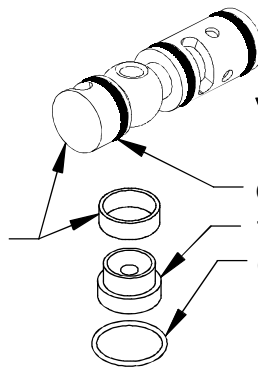
SP175 EYEWASH SIGN



SP170 TEST TAG



SPOOL AND SLEEVE ARE NOT INCLUDED WITH KIT

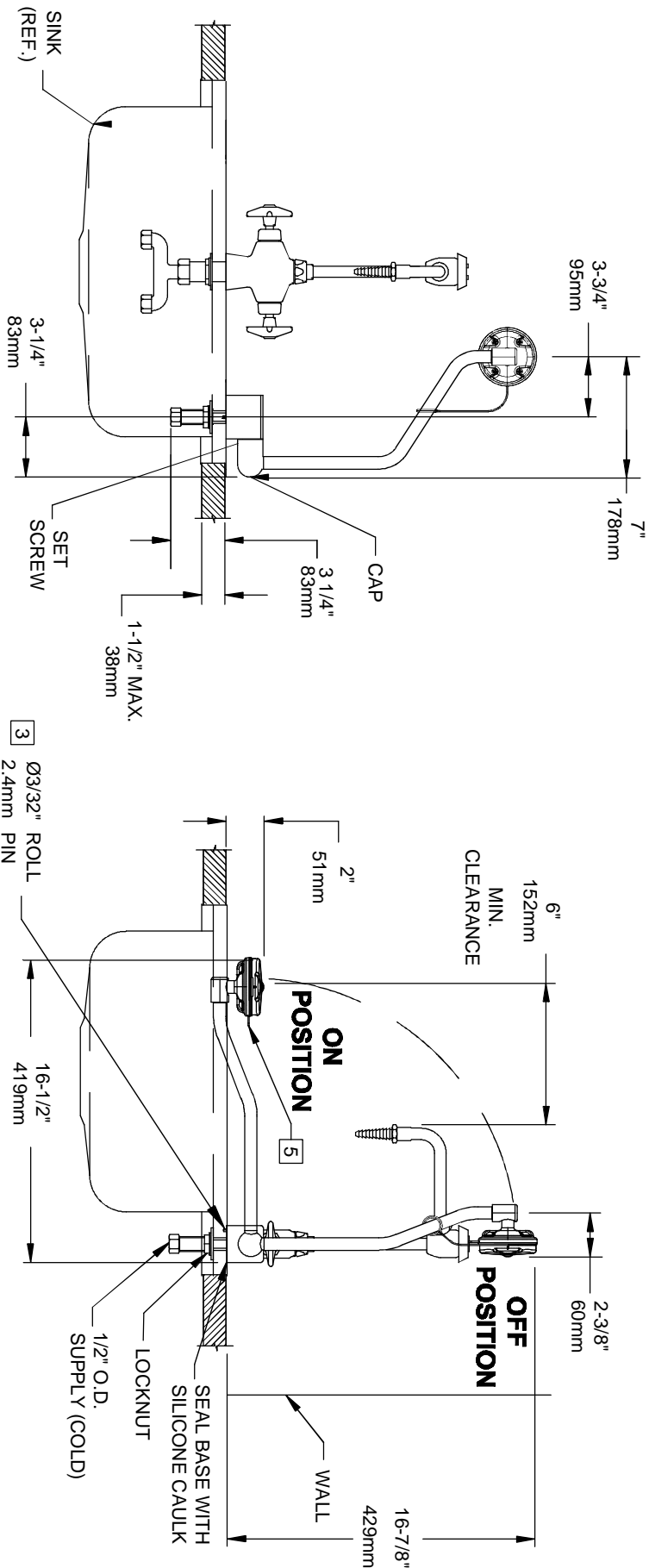


**VRK7650 REPAIR KIT INCLUDES:**

- O-RING (SMALL) QTY. 3
- 7650 SEAT QTY. 1
- O-RING (LARGE) QTY. 1

		1455 KLEPPE LANE SPARKS, NEVADA 89431 (775) 359-4712 FAX (775) 359-7424 E-MAIL: HAWS@HAWSCO.COM WEBSITE: WWW.HAWSCO.COM	
		ECN NO. REVISED PER BY ECN: 5005 HM	MODEL(S) 7610
DRAWN STH	DATE 10/29/96	CHKD RVH	REVISION 14
WHEN ORDERING PARTS PLEASE SPECIFY MODEL NUMBER.		APPROVED FV	DATE 06/25/15
SCALE: 1:1		DRAWING TYPE: PARTS BREAKDOWN	SIZE: A SHEET 1 OF 1

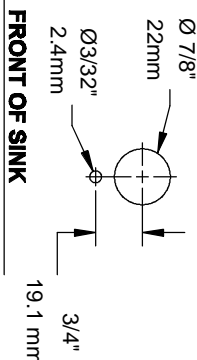
## 7610 DECK MOUNTED CONFIGURATION (SEE SHEET 2 FOR 7610 WALL MOUNTED CONFIGURATION)



### NOTES:

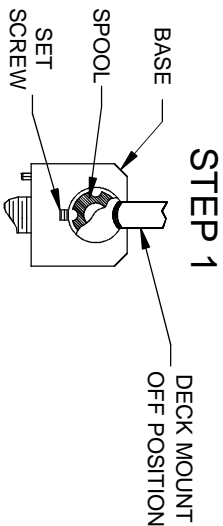
1. WHEN INSTALLING THIS UNIT, LOCAL, STATE, OR FEDERAL CODES SHOULD BE ADHERED TO FOR INSTALLATION DIMENSIONS (LOCATIONS), WASTE AND SUPPLY REQUIREMENTS OTHER THAN SHOWN.
2. THE ANSI Z358.1-2009 STANDARD SPECIFIES EYEWASH NOZZLE HEIGHTS TO BE 83.8cm (33 IN.) TO 114.3cm (45 IN.) ABOVE THE FLOOR AND 15.3cm (6 IN.) MINIMUM FROM WALL OR NEAREST OBSTRUCTION.
3. DRILL ONE  $\varnothing 7/8"$  (22mm) HOLE AND ONE  $\varnothing 3/32"$  HOLE WHERE UNIT IS TO BE INSTALLED. REFER TO MOUNTING HOLE DETAIL.
4. THESE DIMENSIONS MAY VARY  $\pm 1/2"$  [6.4mm].
5. ASSEMBLE EYE/FACE WASH TO ARM, ORIENT TAB ON ASSEMBLY AWAY FROM USER.

### 3 MOUNTING HOLE DETAIL



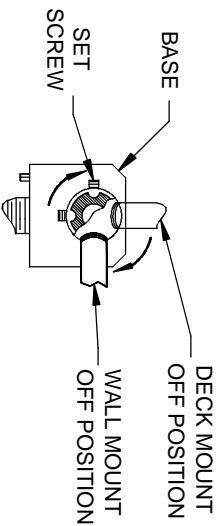
ECN NO. REVISED PER REV.	MODEL(S)	7610	
2066 ECN: 5005	HM	PULLDOWN EYE/FACE WASH	
DATE: 10/96	CHK'D: RVH	SCALE: 1:1	DRAWING TYPE: INSTALLATION
APPROVED: FV	DATE: 06/25/15	SIZE: A	SHEET: 1 OF 2
1455 KLEPPLE LANE SPARKS, NEVADA 89431 (775) 359-4712 FAX (775) 359-7424 E-MAIL: HAWS@HAWS.CO.COM WEBSITE: WWW.HAWS.CO.COM		PART NUMBER 0002080067.D REVISION 14	

## CONVERT TO WALL MOUNT CONFIGURATION



UNIT IS SHIPPED IN DECK MOUNT CONFIGURATION. TO CONVERT TO WALL MOUNT CONFIGURATION, POSITION ARM IN "DECK MOUNT OFF POSITION" AS ABOVE.

### STEP 2



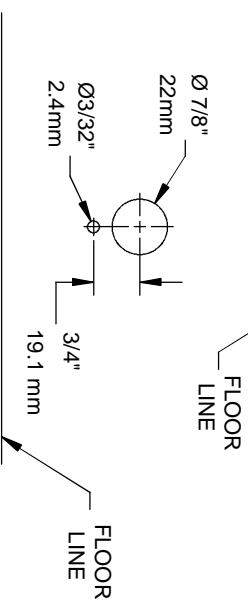
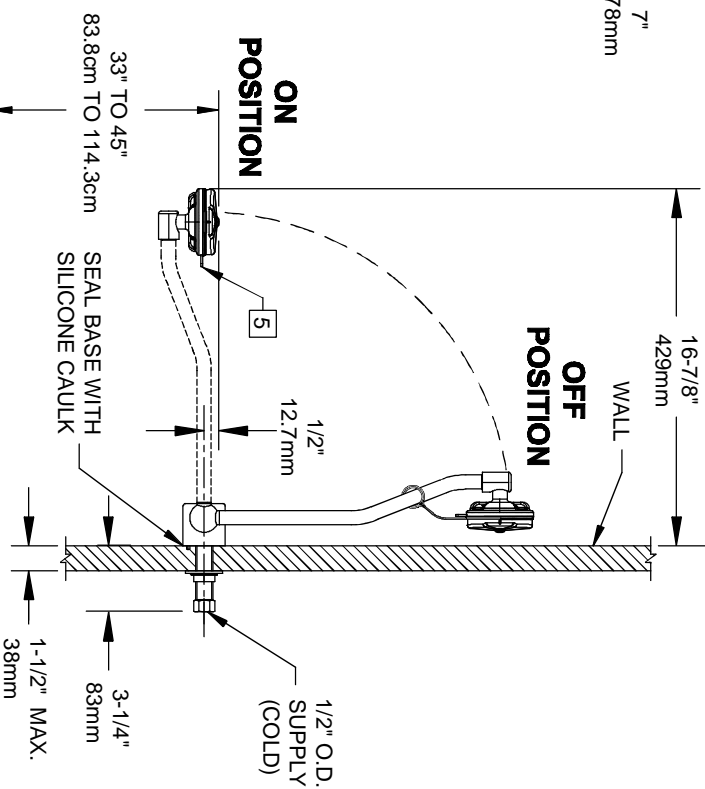
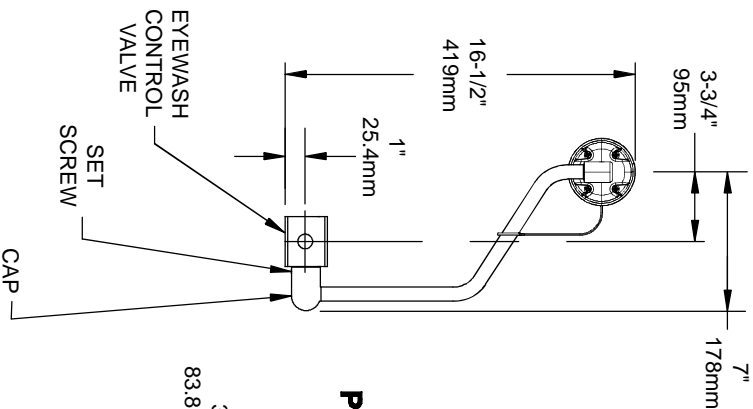
NOTE DEPTH OF SET SCREW PRIOR TO LOOSENING. LOOSEN SET SCREW AND ROTATE EYEWASH ARM 90 DEGREES CLOCKWISE (AS SHOWN) WHILE MAKING SURE TO NOT ROTATE THE SPOOL. RETIGHTEN SET SCREW IN NEW POSITION. ENSURE SET SCREW IS PROPERLY SEATED IN THE INDENT. MAKE SURE THE SET SCREW IS TIGHT AND AT ITS ORIGINAL DEPTH. ENSURE CORRECT ARM ORIENTATION BEFORE MOUNTING TO WALL. REFERENCE DRAWINGS AT RIGHT.

### NOTES:

1. WHEN INSTALLING THIS UNIT, LOCAL, STATE, OR FEDERAL CODES SHOULD BE ADHERED TO FOR INSTALLATION DIMENSIONS (LOCATIONS), WASTE AND SUPPLY REQUIREMENTS OTHER THAN SHOWN.
2. THE ANSI Z358.1-2009 STANDARD SPECIFIES EYEWASH NOZZLE HEIGHTS TO BE 83.8cm (33 IN.) TO 114.3cm (45 IN.) ABOVE THE FLOOR AND 15.3cm (6 IN.) MINIMUM FROM WALL OR NEAREST OBSTRUCTION.
3. DRILL ONE Ø7/8" [22mm] HOLE AND ONE Ø3/32" HOLE WHERE UNIT IS TO BE INSTALLED. REFER TO MOUNTING HOLE DETAIL.
4. THESE DIMENSIONS MAY VARY ±1/2" [6.4mm].

5. ASSEMBLE EYE/FACE WASH TO ARM, ORIENT TAB ON ASSEMBLY AWAY FROM USER.

## 7610 WALL MOUNTED CONFIGURATION (SEE SHEET 1 FOR 7610 DECK MOUNTED CONFIGURATION)



### 3 MOUNTING HOLE DETAIL

		<b>Haws</b>	
ENGINEERED/DESIGNED BY: 2066 EON:5005 HJM	MODEL(S) 7610	1455 KLEPPE LANE SPARKS, NEVADA 89431 (775) 359-4712 FAX (775) 359-7424 E-MAIL: HAWS@HAWSCO.COM WEBSITE: WWW.HAWSCO.COM	
DRAWING DATE: 10/06	CHKD: RYH	PART NUMBER 0002080067.D	
APPROVED: FV	DATE: 08/25/15	SCALE: 1:1	DRAWING TYPE: PULLDOWN EYE/FACE WASH
		SIZE: A	SHEET 2 OF 2