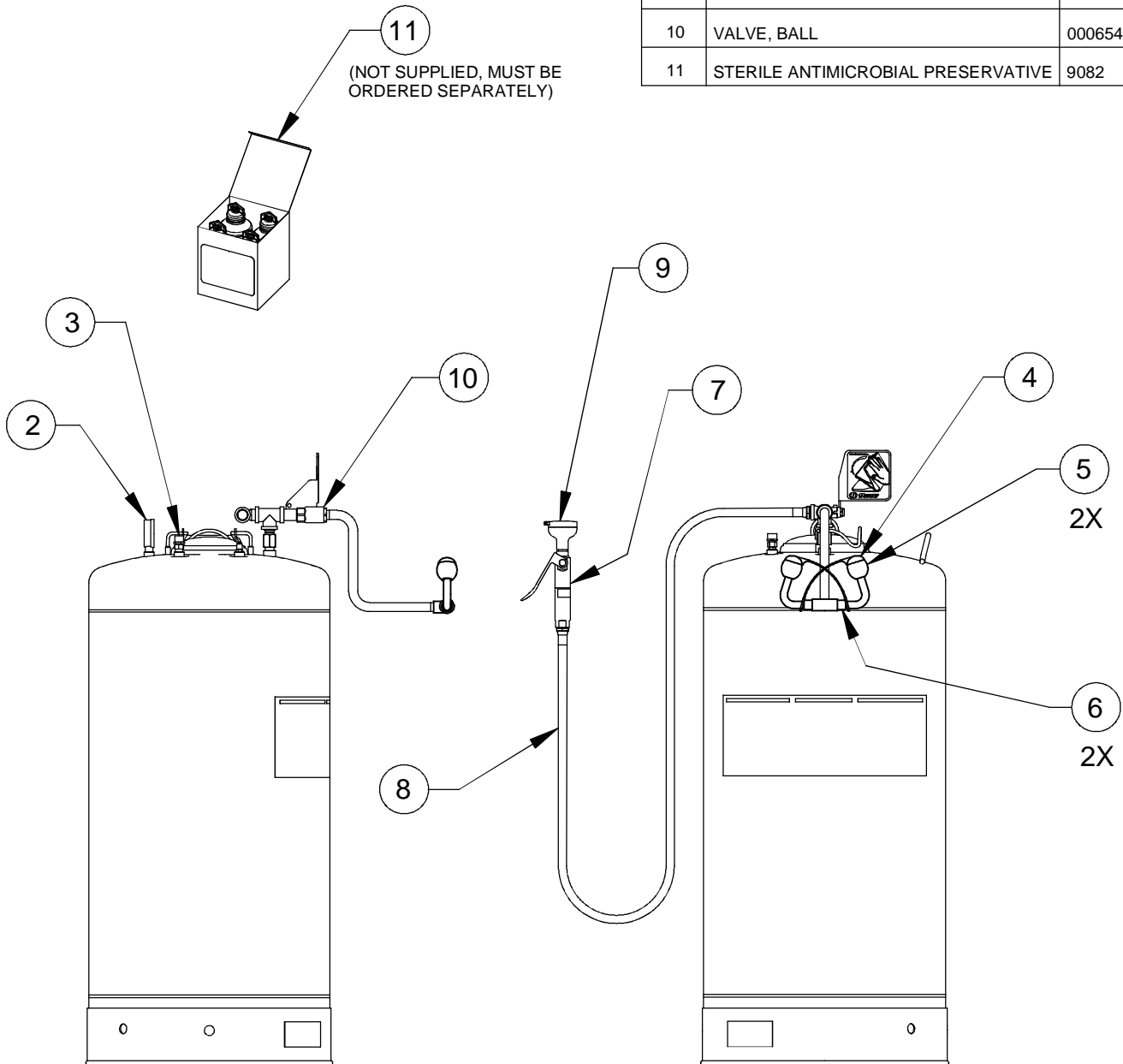



PARTS BREAKDOWN

ITEM	DESCRIPTION	PART NO.
1	VALVE, AIR	0006522676
2	GAUGE, PRESSURE	0002580702
3	VALVE, RELIEF	0006520715
4	COVER, POP-OFF	9094
5	HEAD, EYEWASH	SP12
6	FLOW CONTROL	0012506950
7	SQUEEZE VALVE	SP248
8	HOSE	SP142
9	HEAD EYE/FACE	0002974804
10	VALVE, BALL	0006546340
11	STERILE ANTIMICROBIAL PRESERVATIVE	9082



		Haws [®]		1455 KLEPPE LANE SPARKS, NEVADA 89431 (775) 359-4712 FAX (775) 359-7424 E-MAIL: HAWS@HAWS.CO.COM WEBSITE: WWW.HAWS.CO.COM	
				ECN NO. REVISED PER BY ECN: 4967 HM	MODEL(S) 7601.37
DRAWN RTM	DATE 1/15/97	CHKD RVH	37 GALLON PORTABLE EW		
APPROVED FV	DATE 06/17/15	SCALE: 1:12	DRAWING TYPE: PARTS BREAKDOWN	REVISION 15	SIZE: A SHEET 1 OF 1

WHEN ORDERING PARTS PLEASE SPECIFY MODEL NUMBER.