



model 6800

Support Frame

FEATURES & BENEFITS

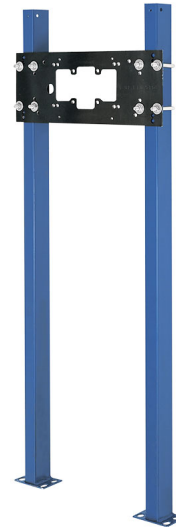
MOUNTING

Painted steel support posts with mounting feet, and heavy duty cad plated U-bolts provide the maximum mounting strength for many Haws wall mounted drinking fountains.

OPTIONS

- ❑ Mounting Plate: Model 6715 "Hi-Lo" mounting plate for Haws fountain model 1501.
- ❑ Mounting Plate: Model 6700 universal mounting plate for most wall mounted fountains.Priced Separately
- ❑ Mounting Plate: Model 6700.4 "Hi-Lo" universal mounting plate for most dual bubbler fountains.Priced Separately
- ❑ Mounting Plate: Model 6710 mounting plate.

To see all options for this model, visit www.hawasco.com



SPECIFICATIONS

Model 6800 universal support shall include dual steel tube supports with integral 3/16" (.47 cm) steel mounting feet along with u-bolts and hardware.

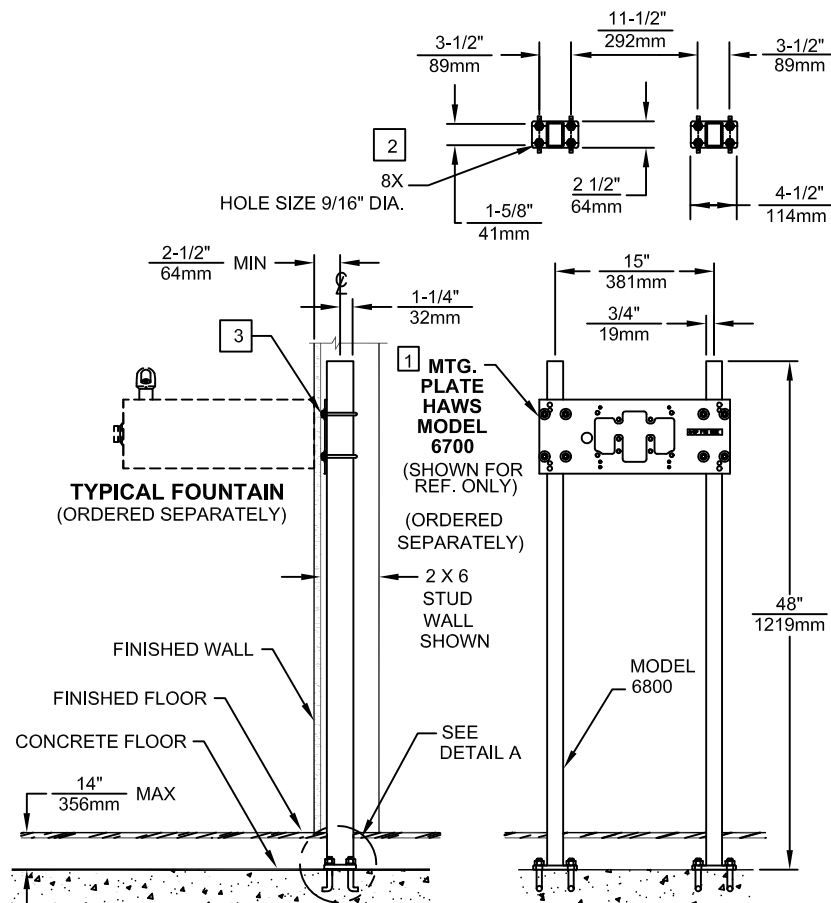
APPLICATIONS

Haws produces this mounting frame to assist in the installation process as well as to provide a solid base for the wall mounted designed fountains. Mounting plates and frames meet the requirements solely for the specified applicable fountains and are not designed to be used in the installation of any unspecified fountain.



NOTE:

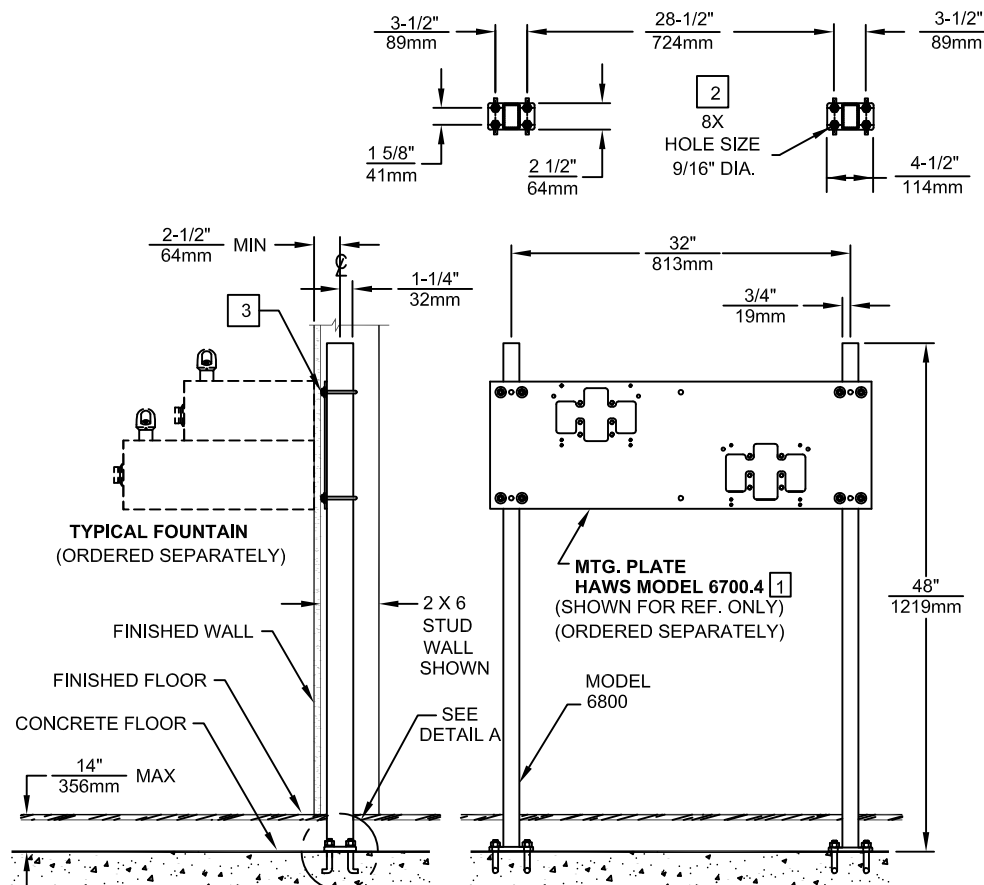
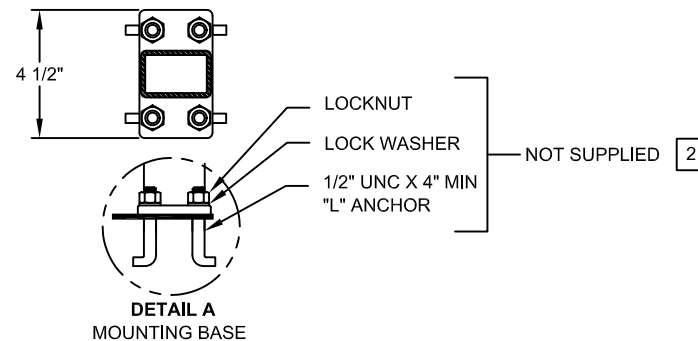
- 1 THE 6800 SUPPORT CARRIER CAN ALSO BE USED WITH MOUNTING PLATE MODELS 6705, 6710, 6715 AND 6717.
- 2 ANCHORING SYSTEM - MINIMUM REQUIREMENTS: 1/2" UNC X 4" MIN. "L" ANCHORS (QTY 8) AND ASSOCIATED HARDWARE (NOT SUPPLIED). SEE MOUNTING BASE DETAIL A.
- 3 WHEN PLACED IN A 2 X 4 STUD WALL, U-BOLTS (SUPPLIED WITH ASSOCIATED HARDWARE) MUST BE TRIMMED AFTER BACK PANEL HEIGHT IS ADJUSTED.



FOR MODELS: 1001, 1025 1047, 1075, 1105, 1107L, AND 1109

ATTENTION

THIS CHAIR CARRIER IS USED WITH SEVERAL DIFFERENT MODELS. FOR FOUNTAIN ROUGH-IN HEIGHTS AND MOUNTING PLATE ORIENTATION SEE THE MOST CURRENT INSTALLATION INSTRUCTIONS SUPPLIED WITH THE FOUNTAIN AND MOUNTING PLATE BEING USED PRIOR TO INSTALLING THIS UNIT.



FOR MODELS: 1011, 1117L, 1119 AND 1119.14



1455 KLEPPE LANE
SPARKS, NEVADA 89431
(775) 359-4712 FAX (775) 359-7424
E-MAIL: HAWS@HAWS.CO.COM
WEBSITE: WWW.HAWS.CO.COM

ECN NO. REVISED PER BY:	ECN: 4645	HM	MODEL(S)	PART NUMBER
DRAWN: C.J.L.	DATE: 10/93	CHKD:		0002080019
APPROVED:	DATE:		6800	DRAWING NO. REV
				10406C00 13
SCALE: 1:1		DRAWING TYPE: INSTALLATION		SIZE: A SHEET 1 OF 1