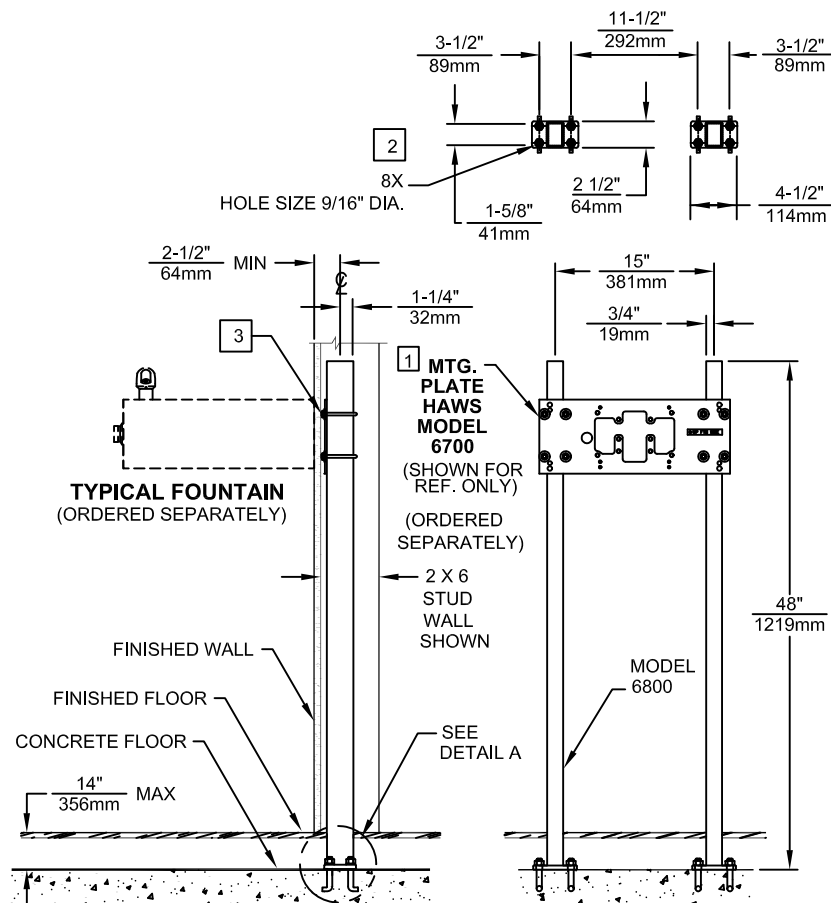


NOTE:

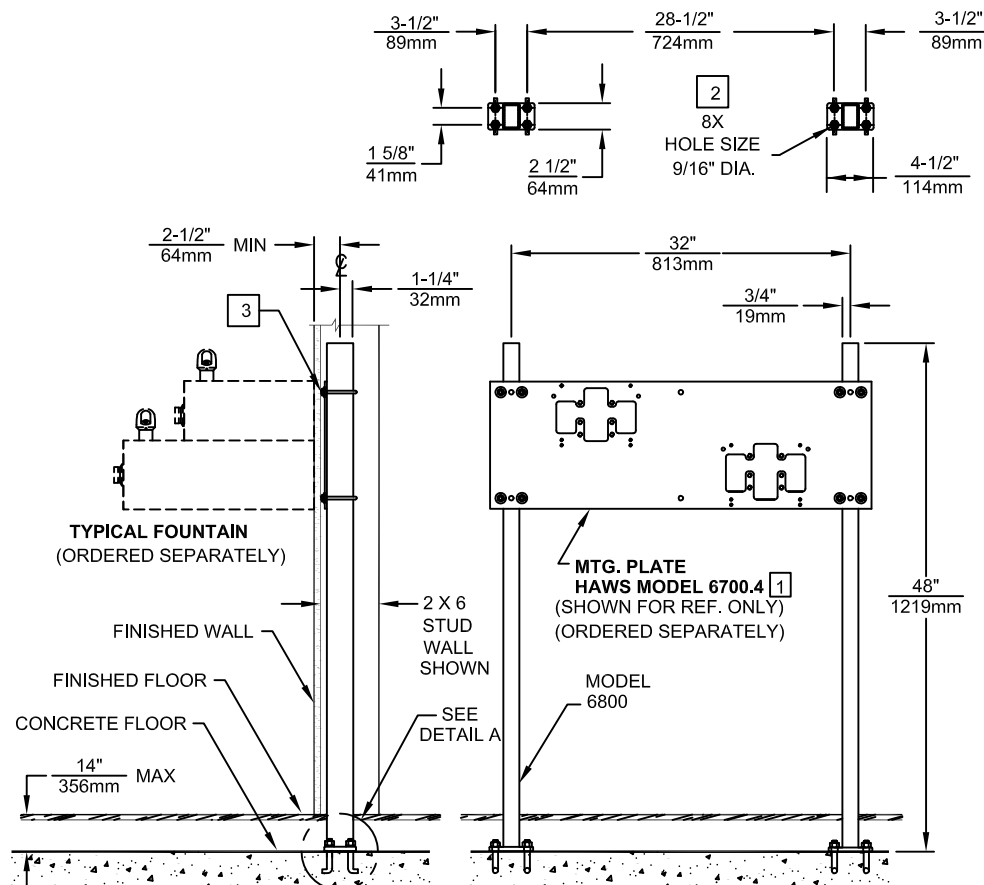
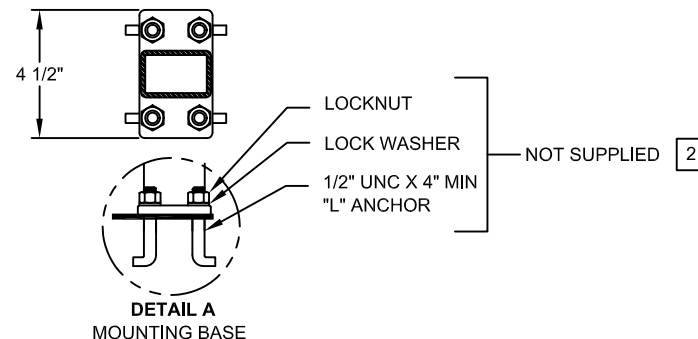
- 1 THE 6800 SUPPORT CARRIER CAN ALSO BE USED WITH MOUNTING PLATE MODELS 6705, 6710, 6715 AND 6717.
- 2 ANCHORING SYSTEM - MINIMUM REQUIREMENTS: 1/2" UNC X 4" MIN. "L" ANCHORS (QTY 8) AND ASSOCIATED HARDWARE (NOT SUPPLIED). SEE MOUNTING BASE DETAIL A.
- 3 WHEN PLACED IN A 2 X 4 STUD WALL, U-BOLTS (SUPPLIED WITH ASSOCIATED HARDWARE) MUST BE TRIMMED AFTER BACK PANEL HEIGHT IS ADJUSTED.



FOR MODELS: 1001, 1025 1047, 1075, 1105, 1107L, AND 1109

ATTENTION

THIS CHAIR CARRIER IS USED WITH SEVERAL DIFFERENT MODELS. FOR FOUNTAIN ROUGH-IN HEIGHTS AND MOUNTING PLATE ORIENTATION SEE THE MOST CURRENT INSTALLATION INSTRUCTIONS SUPPLIED WITH THE FOUNTAIN AND MOUNTING PLATE BEING USED PRIOR TO INSTALLING THIS UNIT.



FOR MODELS: 1011, 1117L, 1119 AND 1119.14



1455 KLEPPE LANE
SPARKS, NEVADA 89431
(775) 359-4712 FAX (775) 359-7424
E-MAIL: HAWS@HAWS.CO.COM
WEBSITE: WWW.HAWS.CO.COM

ECN NO. REVISED PER BY:	ECN: 4645	HM	MODEL(S)	PART NUMBER
DRAWN: C.J.L.	DATE: 10/93	CHKD:		0002080019
APPROVED:	DATE:		6800	DRAWING NO. REV
				10406C00 13
SCALE: 1:1		DRAWING TYPE:	INSTALLATION	SIZE: A SHEET 1 OF 1