

FEATURES & BENEFITS

CONSTRUCTION

Constructed of heavy-duty white polypropylene plastic, the cover can withstand everyday foot traffic, and the body and fittings are hi-density black polyethylene.

DRAIN PROTECTION

For use with pedestal drinking fountains, this ground sand trap will help prevent waste line blockage collecting sand and other debris.

OPTIONS

To see all options for this model, visit www.hawSCO.com



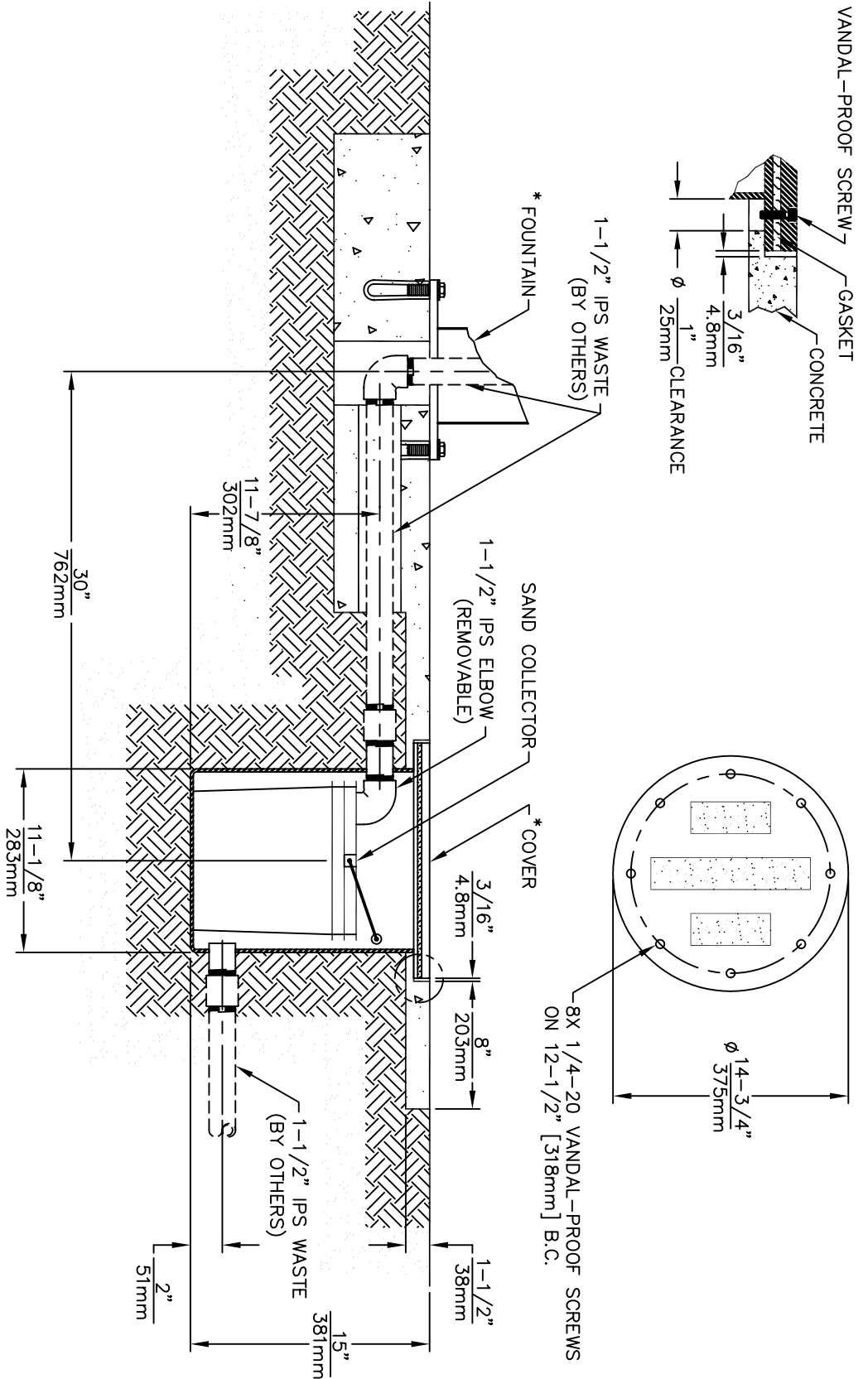
SPECIFICATIONS

Model 6611 sand trap shall include a removable lid, hi-density black polyethylene body and fittings, white polypropylene cover with eight vandal-resistant stainless steel screws, cadmium plated steel anchoring nuts, rubber gasket and three anti-skid strips. Cover is intended for foot traffic only. Key is furnished for vandal-resistant screws.

APPLICATIONS

Specifically, this ground sand trap is designed for beaches, parks, school playgrounds, or anywhere there is a threat of waste line blockage in connection with pedestal drinking fountains.





* THE TOP COVER OF THIS SAND TRAP IS ONLY INTENDED FOR FOOT TRAFFIC. FOR INSTALLATION OF FOUNTAIN, REFER TO THE INSTALLATION INSTRUCTIONS SHIPPED WITH YOUR MODEL.



INFO FAX : 1-888-FAX-HAWS (1-888-329-4297)

1455 Kieppe Ln, Sparks NY, 89431
 Phone: 775-359-4712 Fax: 775-359-7424
 Haws Ag Bochiweg 3 CH-3401 Burgdorf Switzerland
 Haws Mfg Pte Ltd 74 Sungai Kodut Loop Singapore 729531
 e-mail: Haws@hawsco.com Website: www.hawsco.com

| | | | | |
|----------|-------|----|------|--|
| REVISION | DATE | BY | CHKD | TITLE |
| ECN 3260 | 09-92 | MR | | SAND TRAP - 6611 |
| APPROVED | | | | MODEL: 6611 |
| | | | | INFO FAX DOC #: 26611 |
| | | | | SCALE: 1:1 DRAWING TYPE: INSTALLATION/BACK |
| | | | | PART NUMBER: 000207271 |
| | | | | REV: 06141C00 |
| | | | | SHEET 1 OF 1 |