



model 6521FR

Freeze Resistant In-Wall Valve

FEATURES & BENEFITS

MOUNTING

Reliable and fully engineered system allows for the pneumatic valve and waste assembly mounted within an insulated galvanized steel box to be installed in a heated wall space allowing the mating drinking fountain to be used year round without freezing.

FLOW REGULATION

The valve system is furnished with automatic .4 gpm (1.5 L) stream regulation.

OPTIONS

To see all options for this model, visit www.hawesco.com



SPECIFICATIONS

Model 6521FR freeze-resistant valve system for use with single bubbler wall mounted fountains shall include a brass pneumatic operated valve, waste assembly designed to drain water left in supply line to fountain, regulator valve, insulated galvanized steel mounting box installed on interior wall where temperatures maintain a minimum of 50° F (10° C), self-regulating .4 gpm (1.5 L) flow control, 1/2" IPS supply, and 1-1/4" IPS trap.

APPLICATIONS

Freeze-resistant valve system is used in all Haws single bubbler, freeze-resistant, wall mounted fountains. Designed to be mounted in a setting with a minimum of 50^{MF}, this valve system allows the fountain it is installed with to function year round in freezing conditions. Responsible for this non-freezing feat is a pneumatic operated valve and waste assembly. Unit drains the left over water in the supply line back into the temperature regulated waste cabinet for removal. Product is compliant to California Health and Safety Code 116875 (AB 1953-2006).



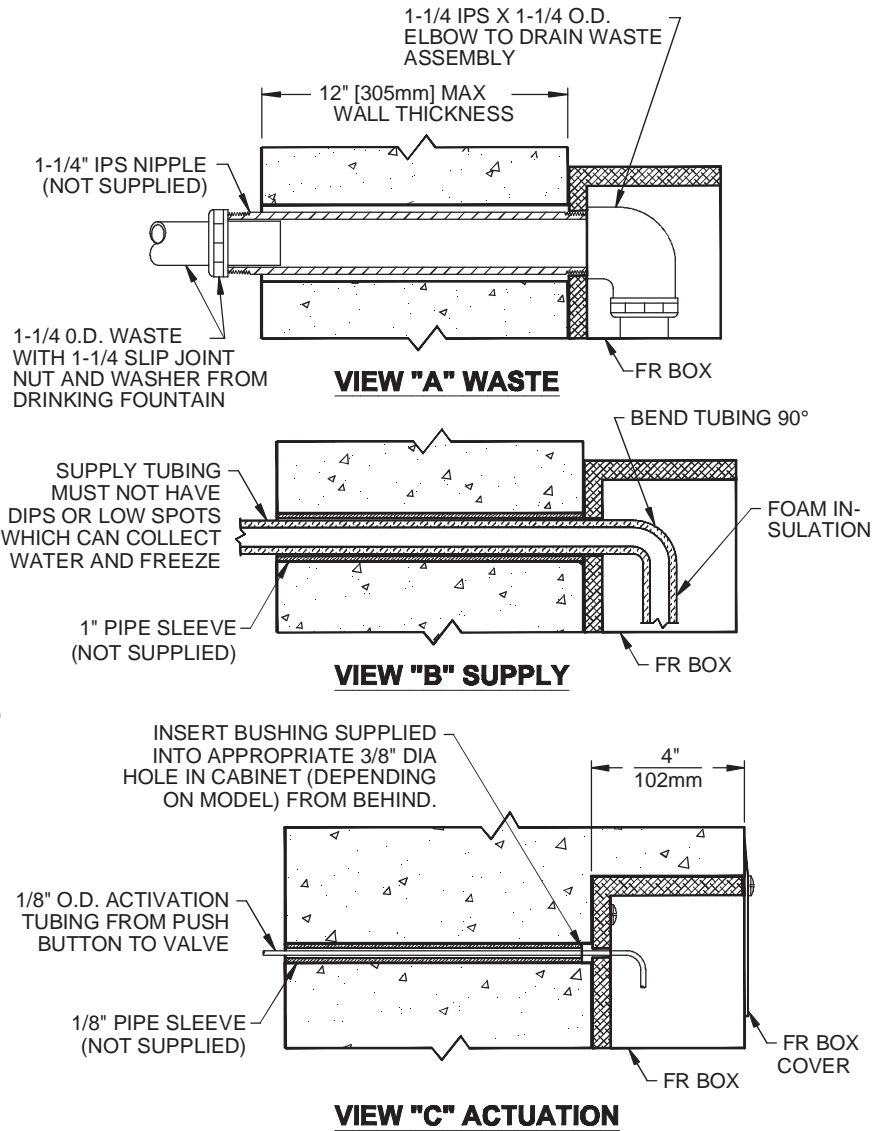
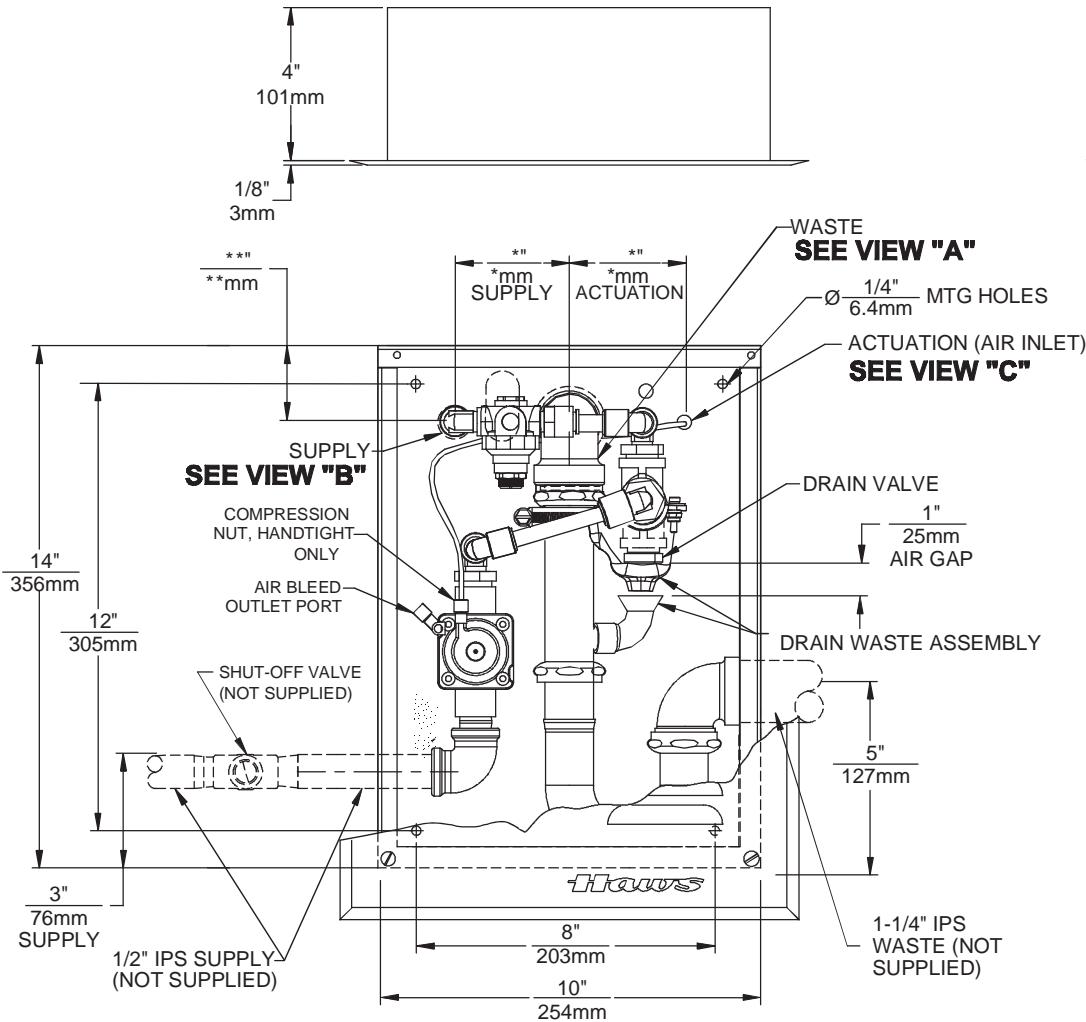
NOTES:

UNIT MAY BE RECESSED MOUNTED IN WALL AS SHOWN IN VIEW "C" OR SURFACE MOUNTED AS SHOWN IN VIEWS "A" AND "B".

* FOR ALL MODELS OTHER THAN 1001FR THESE DIMENSIONS ARE 3" [76mm] SUPPLY & 3" [76mm] ACTUATION. FOR MODELS 1001FR THESE DIMENSIONS ARE 1-3/4" [44mm] SUPPLY AND 2" [51mm] ACTUATION.

** FOR ALL MODELS OTHER THAN 1001FR THIS DIMENSION IS 2" [51mm] FOR 1001FR THIS DIMENSION IS 1-3/16" [30mm].

VALVE MUST BE INSTALLED IN SPACE THAT MAINTAINS A MINIMUM OF 50°F.



		1455 KLEPPE LANE SPARKS, NEVADA 89431 (775) 359-4712 FAX (755) 359-7424 E-MAIL: HAWS@HAWSCO.COM WEBSITE: WWW.HAWSCO.COM	
		ECN NO. REVISED PER BY: ECH:4921 FV DRAWN: C.J.L. DATE: 09/92 CHKD.: APPROVED: FV DATE: 10/21/14	MODEL(S) 6521FR FREEZE VALVE 1 BUBBLER
©2014 Haws Corporation - All Rights Reserved. HAWS® and other trademarks used in these materials are the exclusive property of Haws Corporation.		SCALE: 1:5 DRAWING TYPE: INSTALLATION SIZE: A SHEET 1 OF 1	