



model **5851LF**  
Faucet Valve

## FEATURES & BENEFITS

### VALVE

Polished chrome-plated, lead-free brass, lever handle self-closing valve features screwdriver adjustment stream control.

## OPTIONS

To see all options for this model, visit [www.hawesco.com](http://www.hawesco.com)



## SPECIFICATIONS

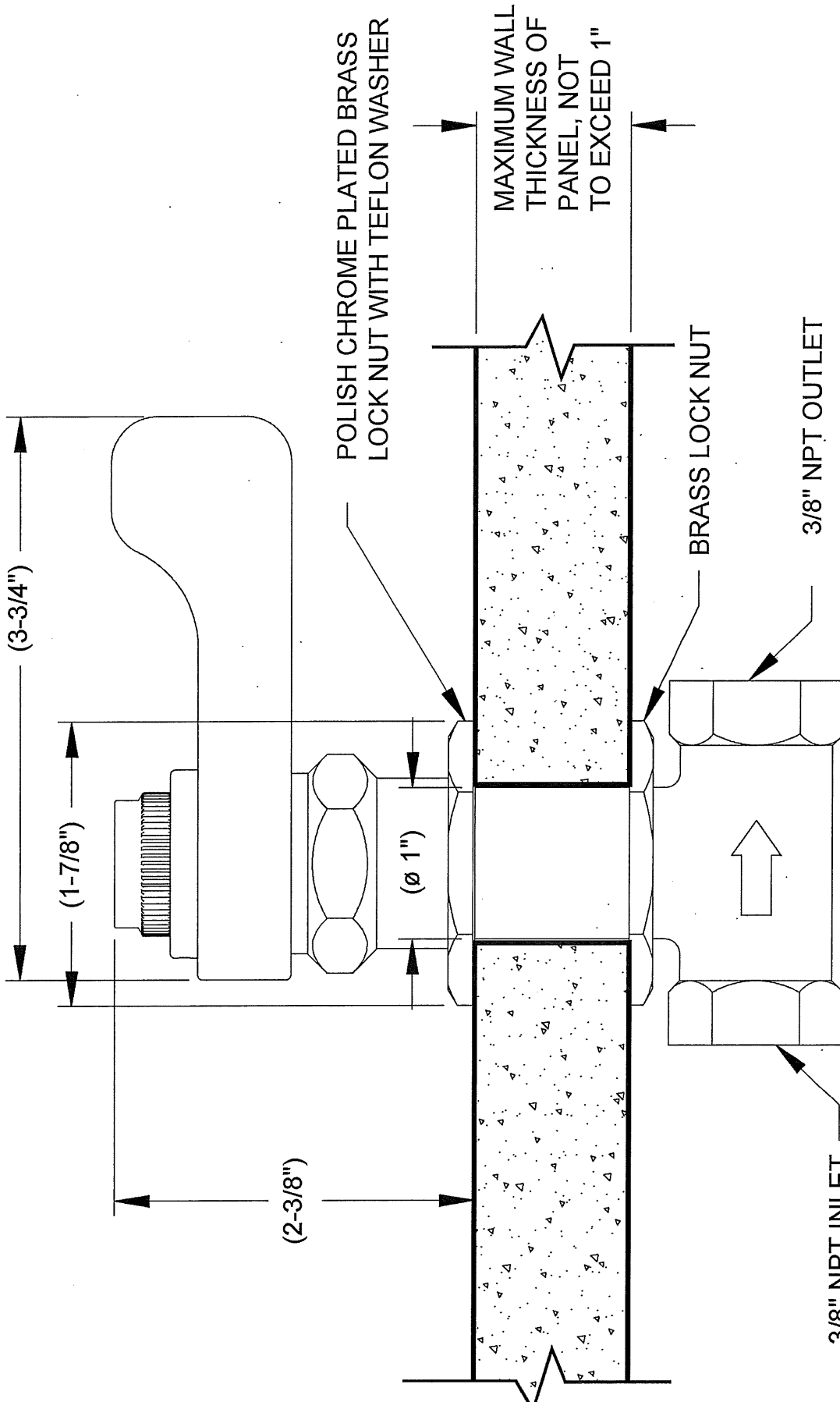
Model 5851LF is a panel mounted valve with a polished chrome-plated vandal-resistant lever handle and rough brass body, mount to a maximum wall thickness capability of 1" (2.5 cm), and 3/8" IPS inlet and outlet.

## APPLICATIONS

Easily adapted to many situations involving the use of drinking water. Specifically, this type of bubbler valve is used as a replacement valve for some Haws products, or may be placed in such settings as: schools, campgrounds, laboratories, classrooms, parks, and other areas where the need for a bubbler valve is needed to dispense water. Haws manufactures drinking fountains and electric water coolers to be lead-free by all known definitions including NSF/ANSI Standard 61, Section 9, NSF/ANSI 372, California Proposition 65, and the Federal Safe Drinking Water Act.

**NOTES:**

1. THE HANDLE/STEM REPAIR KIT FOR THIS MODEL IS: 5851LFHST.
2. THE VALVE REPAIR KIT FOR THIS MODEL IS: 5800VRKT.



**Haws**<sup>®</sup>

1455 KLEPPE LANE  
SPARKS, NEVADA, 89431  
(775) 359-4712 FAX (765) 359-7424  
E-MAIL: HAWS@HAWS.CO.COM  
WEBSITE: WWW.HAWS.CO.COM

MODEL(S) 5851LF

ECN NO. REVISED PER BY: HM  
ECON: 4754  
DRAWN: GE DATE: 1/19/95  
APPROVED: [Signature]

PART NUMBER 0002077550  
DRAWING NO. 11884A00  
REV. 6

SCALE: 1:1 DRAWING TYPE: INSTALLATION SIZE: A SHEET 1 OF 1