

## FEATURES & BENEFITS

### QUALITY

Bubbler is pre-built and fully water and pressure tested to ensure no leaks and proper function for reduced installation time and added peace of mind.

### BUBBLER VALVE

Polished stainless steel cartridge valve which allows for top access stream adjustment as well as cartridge and strainer access, and is designed with a shielded, anti-squirt orifice that provides a steady sanitary source of water.

## OPTIONS

To see all options for this model, visit [www.hawesco.com](http://www.hawesco.com)



## SPECIFICATIONS

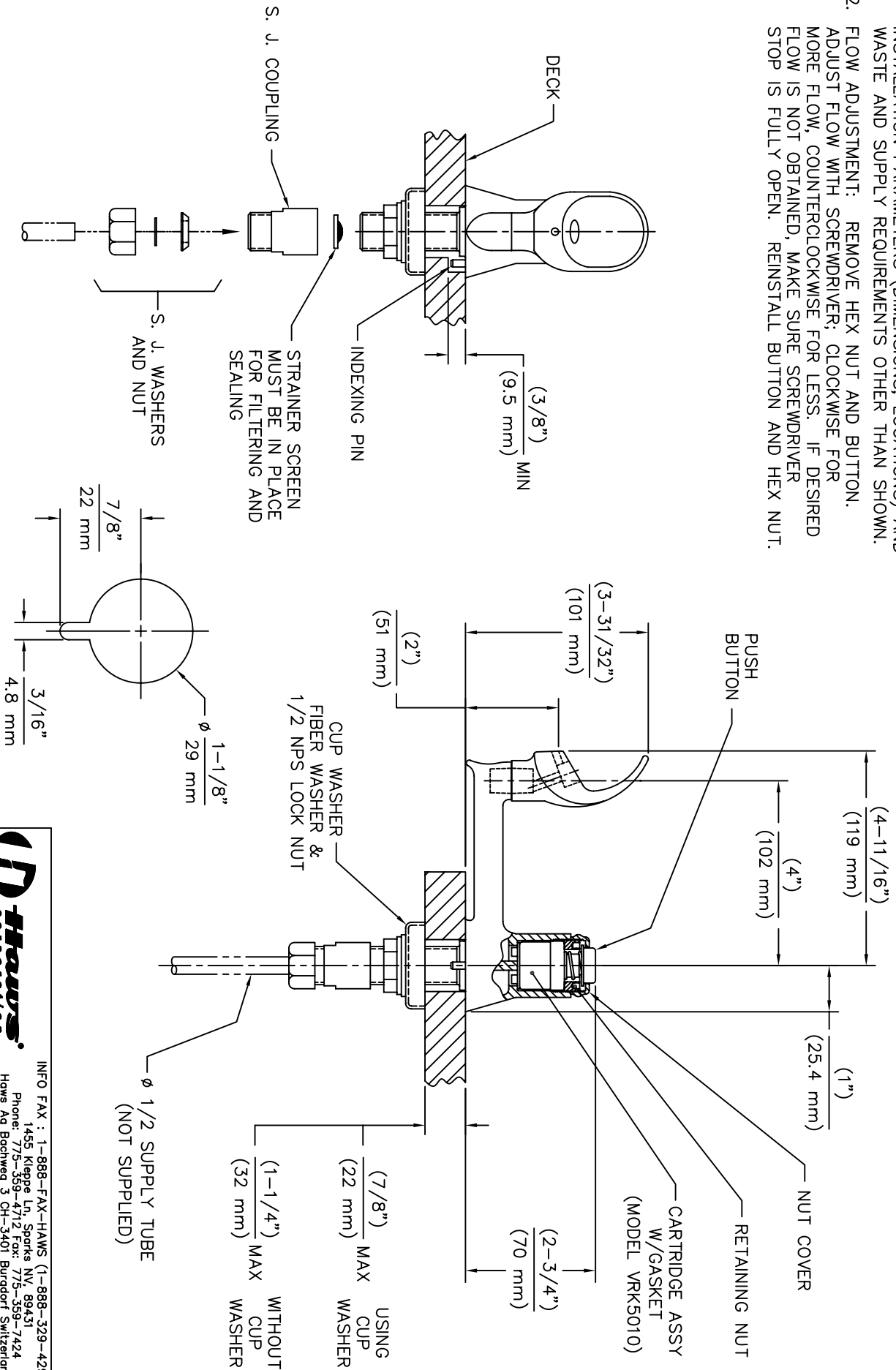
Model 5017LF deck mounted bubbler valve shall include a polished chrome-plated brass base with integral cartridge valve with stream flow regulation, polished chrome-plated brass bubbler head, and 1/2" O.D. (1.3 cm) slip-joint inlet.

## APPLICATIONS

Perfect for either public or private indoor settings, the 5017LF is a great fit in areas where a countertop is in close proximity to a sink/bowl. Specifically, this type of deck mounted drinking faucet may be placed in settings such as: schools, classrooms, laboratories, and other facilities where the need for a deck mounted sink/faucet is present. This product meets ADA requirements, and Haws manufactures drinking fountains and electric water coolers to be lead-free by all known definitions including NSF/ANSI Standard 61, Section 9, NSF/ANSI 372, California Proposition 65, and the Federal Safe Drinking Water Act.

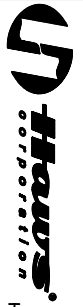
**NOTES:**

1. WHEN INSTALLING THIS UNIT, LOCAL, STATE OR FEDERAL CODES SHOULD BE ADHERED TO FOR INSTALLATION PARAMETERS (DIMENSIONS, LOCATIONS) AND WASTE AND SUPPLY REQUIREMENTS OTHER THAN SHOWN.
2. FLOW ADJUSTMENT: REMOVE HEX NUT AND BUTTON. ADJUST FLOW WITH SCREWDRIVER; CLOCKWISE FOR MORE FLOW, COUNTERCLOCKWISE FOR LESS. IF DESIRED FLOW IS NOT OBTAINED, MAKE SURE SCREWDRIVER STOP IS FULLY OPEN. REINSTALL BUTTON AND HEX NUT.



**MOUNTING HOLE**

SCALE: 2/1



INFO FAX : 1-888-FAX-HAWS (1-888-329-4297)

1455 Kleppe Ln, Sparks, NV, 89431

Phone: 775-355-4715 Fax: 775-355-7424

Haws AG, Buehlerweg 3, CH-3401 Burgdorf, Switzerland

Haws Wfg Pte Ltd, 74 Sungei Kadut Loop, Singapore 729531

e-mail: Haws@hawsco.com website: www.hawsco.com

FORM NO.	REVISION	DATE	MODEL(S)
FORM NO.	5017LF		
DATE	07/99		
SCALE	1:3		
FORMING TYPE	INSTALLATION/FABRICATION		
SIZE	A	SHT.	1 OF 1