



INSTALLATION, OPERATION & MAINTENANCE INSTRUCTIONS

1455 Kleppe Lane ♦ Sparks, NV 89431-6467 ♦ (775) 359-4712 ♦ Fax (775) 359-7424
E-mail: haws@hawsco.com ♦ website: www.hawsco.com

No.2075000 (0)

Model 5010.6427SS

NOTE TO INSTALLER: Please leave this information with the Maintenance Department.

LIMITED WARRANTY

HAWS® warrants that all of its products are guaranteed against defective material or poor workmanship for a period of **one year from date of shipment**. HAWS liability under this warranty shall be discharged by furnishing without charge F.O.B. HAWS Factory any goods, or part thereof, which shall appear to the Company upon inspection to be of defective material or not of first class workmanship, provided that claim is made in writing to company within a reasonable period after receipt of the product. Where claims for defects are made, the defective part or parts shall be delivered to the Company, prepaid, for inspection. HAWS will not be liable for the cost of repairs, alterations or replacements, or for any expense connected therewith made by the owner or his agents, except upon written authority from HAWS, Sparks, Nevada. HAWS will not be liable for any damages caused by defective materials or poor workmanship, except for replacements, as provided above. Buyer agrees that Haws has made no other warranties either expressed or implied in addition to those above stated, except that of title with respect to any of the products or equipment sold hereunder and that HAWS shall not be liable for general, special, or consequential damages claimed to arise under the contract of sale. The drinking fountain manufactured by HAWS is warranted to function if installation and maintenance instructions provided are adhered to. The units also must be used for the purpose for which they were intended.

NO OTHER WARRANTIES EXPRESSED OR IMPLIED ARE AUTHORIZED, PROVIDED OR GIVEN BY HAWS.

SHOULD YOU EXPERIENCE DIFFICULTY WITH THE INSTALLATION OF THIS MODEL, PLEASE CALL:

1-800-766-5612

FOR PARTS CALL:

1-800-758-9378

**(U.S.A. AND CANADA ONLY) MONDAY-THURSDAY: 6:00 A.M. – 4:00 P.M. PST
FRIDAY: 6:00 A.M – 1:00 P.M. PST**

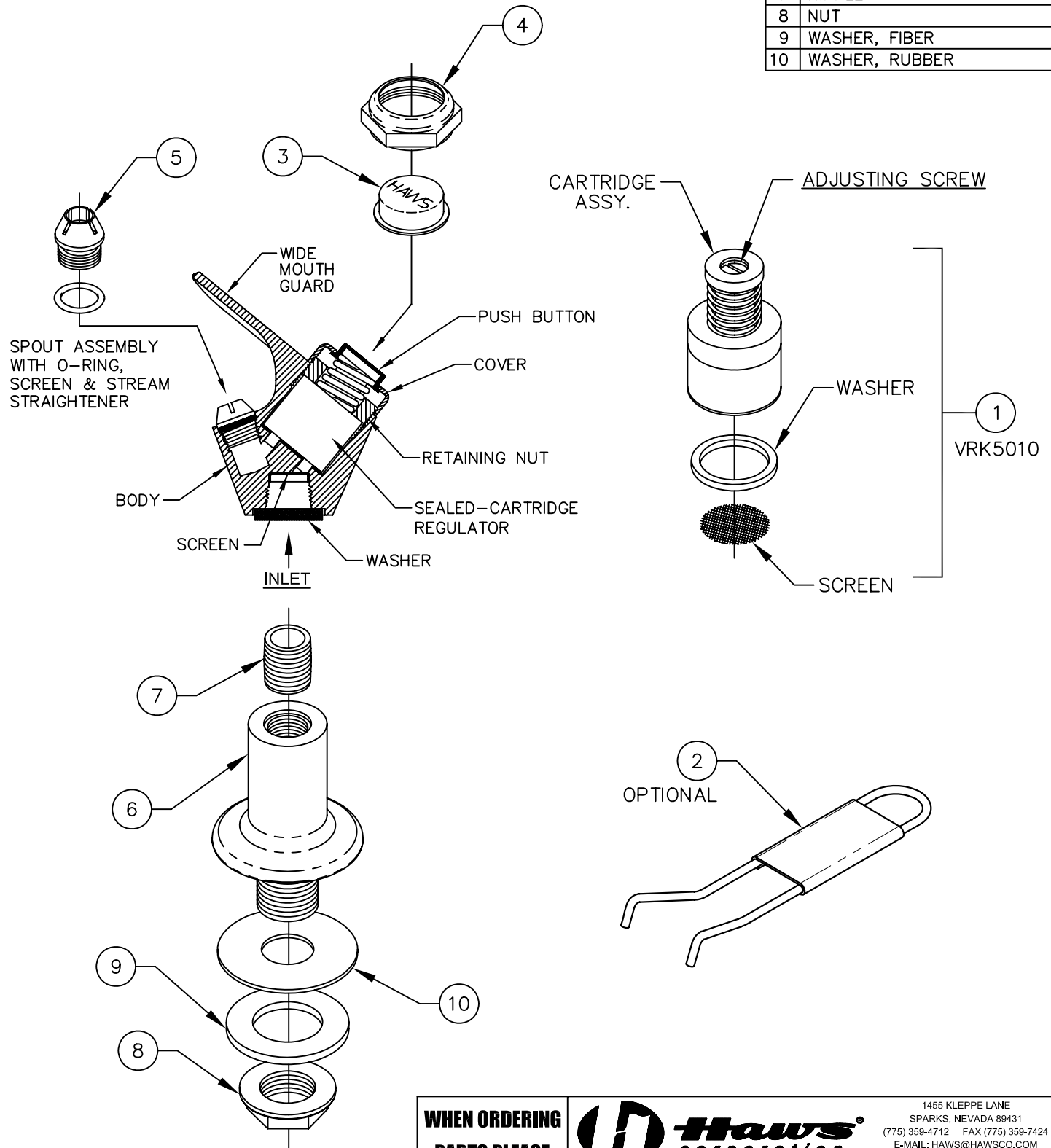
NOTE: To remove head when used with electric water cooler, keep the inlet nipple from turning by holding it with locking pliers inside the fountain, beneath the basin.

- Step 1:** Gain access to flow adjustment screw by removing cover nut and button (see Installation Drawing).
- Step 2:** Adjust flow with screwdriver: clockwise for more flow, counterclockwise for less.
- Step 3:** If desired flow is not obtained, clean screen located at base of valve body and make sure screwdriver stop is fully opened.
- Step 4:** Replace button and cover nut.

Note: Replacement cartridge, screen, and gasket are available as P/N VRK5010.

MODEL 5010.6427SS PARTS BREAKDOWN

ITEM	DESCRIPTION
1	CARTRIDGE ASSY.
	SCREEN
	WASHER
2	WRENCH SPANNER
3	BUTTON-PUSH
4	NUT COVER, HEX
5	SPOUT, W/"O" RING
6	FLANGE
7	NIPPLE
8	NUT
9	WASHER, FIBER
10	WASHER, RUBBER



**WHEN ORDERING
PARTS PLEASE
SPECIFY YOUR
MODEL NUMBER**



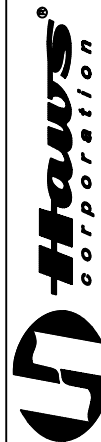
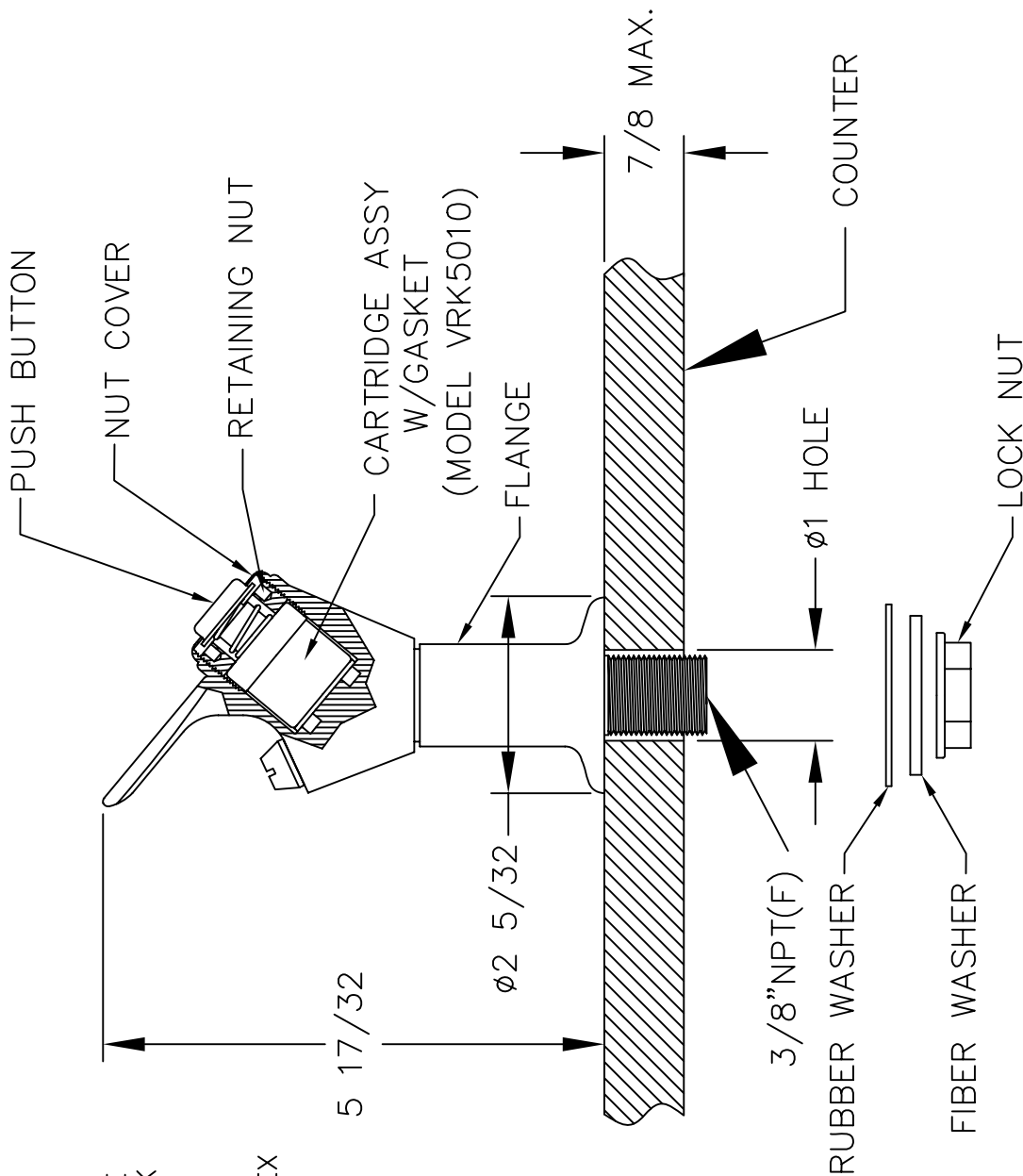
1455 KLEPPE LANE
SPARKS, NEVADA 89431
(775) 359-4712 FAX (775) 359-7424
E-MAIL: HAWS@HAWSO.COM
WEBSITE: WWW.HAWSO.COM

DRAWN BY: SLS	DATE: 01/14/09	CHECK BY:	APPROV BY:	SCALE: 1/1
TITLE: 5010.6427SS				PART NUMBER: 0002075000
DRAWING TYPE: PARTS BREAKDOWN				DRAWING NUMBER: 15854A00
				REV: 0

NOTES:

TO ADJUST FLOW:

1. REMOVE HEX NUT COVER AND PUSH BUTTON COVER.
2. ADJUST WITH SCREWDRIVER: CLOCKWISE TO INCREASE FLOW & COUNTER-CLOCKWISE TO DECREASE FLOW.
3. IF DESIRED FLOW IS NOT OBTAINED, CLEAN SCREEN AT INLET.
4. REPLACE PUSH BUTTON COVER AND HEX NUT COVER.



1455 KLEPPE LANE
SPARKS, NEVADA 89431
(775) 359-4712 FAX (775) 359-7424
E-MAIL: HAWS@HAWSO.COM
WEBSITE: WWW.HAWSO.COM

REV	DATE	BY	CHKD	INFO	SCALE	TYPE	INSTALLATION	BACK
4215	01/14/09	SLS	SLS	5010.6427SS	25010677			
0002075000.D	15853A00	0	1					
0002075000.D	15853A00	0	1					