



model 4110ADA

Enameled Iron Deck Sink

FEATURES & BENEFITS

CONSTRUCTION

Heavy duty cast iron basin with a glossy white acid-resisting enamel finish is designed for the toughest of applications.

OPTIONS

- Waste Strainer: Model 6455, polished chrome-plated brass flat waste strainer.

To see all options for this model, visit www.hawesco.com



SPECIFICATIONS

Model 4110ADA barrier-free deck mounted sink shall include a white acid-resistant enameled iron 24" x 16" x 5" (61 x 40.6 x 12.7 cm) deep basin with barrier-free capabilities when installation guidelines are followed, two cross-slotted holes to accept faucets, and a stainless steel mounting rim.

APPLICATIONS

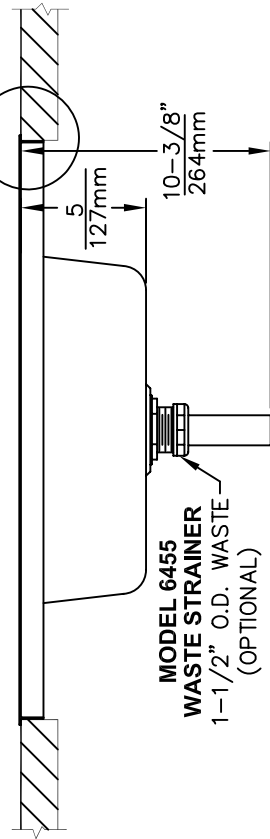
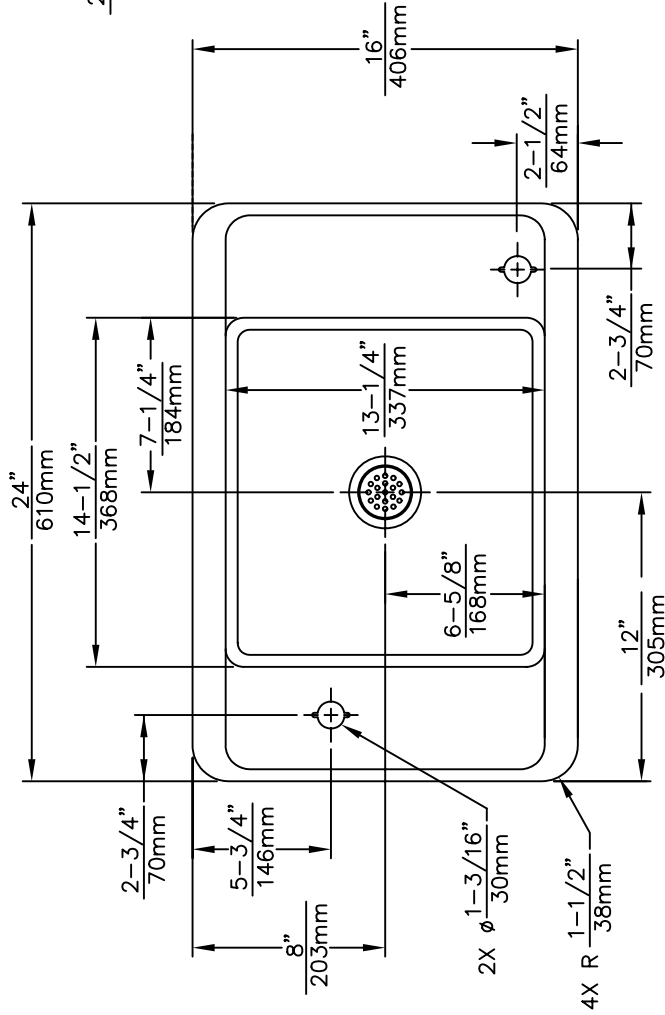
Perfect for either public or private indoor settings, the 4110ADA is a great fit in areas where a countertop is the best fit for a drinking faucet/sink mount. Specifically, this type of deck mounted sink may be placed in settings such as: schools classrooms, laboratories, and other facilities where the need for a deck mounted sink/fountain is present. Dual purpose abilities allow the unit to provide multiple functions in one area and not take up excess space. Model meets all current Federal Regulations for the disabled including those in the Americans with Disabilities Act. Haws manufactures drinking fountains and electric water coolers to be lead-free by all known definitions including NSF/ANSI Standard 61, Section 9, NSF/ANSI 372, California Proposition 65, and the Federal Safe Drinking Water Act.



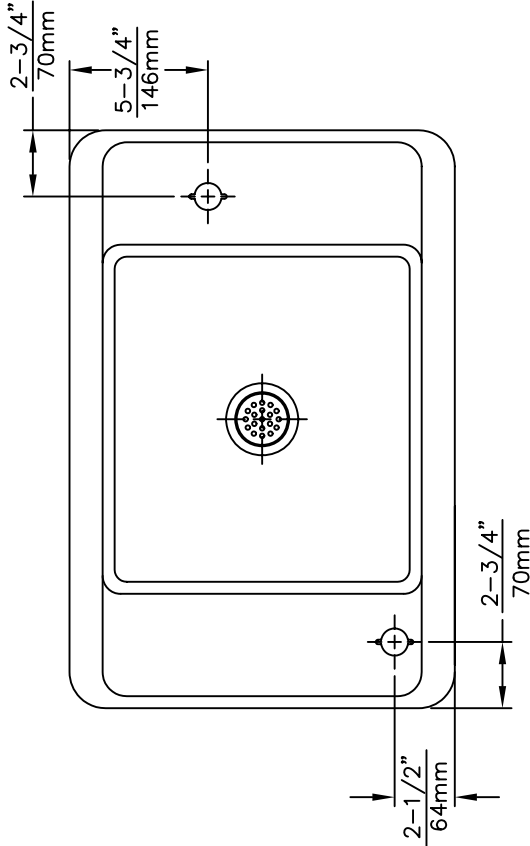
THIS DOCUMENT IS TRUE AND CORRECT AT TIME OF PUBLICATION. CONTINUED PRODUCT IMPROVEMENTS MAKE SPECIFICATIONS AND MEASUREMENTS SUBJECT TO CHANGE WITHOUT NOTICE.

DO NOT CUT HOLES IN COUNTER TOP UNTIL SINK IS AT HAND. SINKS HANG INSIDE COUNTER-TOP CUTOUT; THEY DO NOT OVERLAP EDGE. IN MARKING CUTOUT ON COUNTER, THE MOUNTING RIM IS USED AS THE TEMPLATE, NOT THE SINK. RIM MUST FIT LOOSELY IN THE HOLE, OVERLAPPING BOTH COUNTER AND SINK (SEE VIEW A). CUTOUT SHOULD BE 3/8" (9.5mm) LARGER THAN SINK, ALLOWING A MINIMUM CLEARANCE OF 1/16" (1.6mm) ALL AROUND.

CAUTION: VERTICAL PARTITIONS UNDER SINK MUST BE AT LEAST 2" (51mm) AWAY FROM SINK CUTOUT TO ALLOW FOR INSTALLATION OF LUGS TO THE MOUNTING RIM.

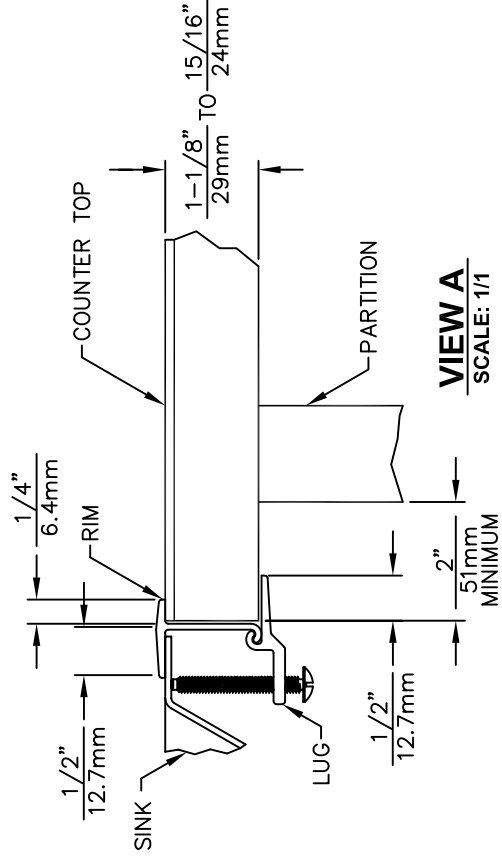


MODEL 6455
WASTE STRAINER
1-1/2" O.D. WASTE
(OPTIONAL)



4110ADA.LH

(4110ADA OVERALL DIM'S, RADIUS & HOLE SIZE CALLOUTS, APPLY TO 4110ADA.LH)



VIEW A
SCALE: 1/1

Haws Corporation
 INFO FAX : 1-888-FAX-HAWS (1-888-329-4297)
 1455 Kleppe Ln, Sparks NV, 89431
 Phone: 775-359-4712 Fax: 775-359-7424
 Haws Ag, Bachweg 3, CH-3401 Burgdorf, Switzerland
 Haws Mfg Pte Ltd 74, Sungai Kadut Loop, Singapore 729531
 e-mail: Haws@hawsco.com website: www.hawsco.com

FOR NO.	REVISED PER	ISS.	MODEL(S):
000000	ECN: 4172	HM	4110ADA/4110ADA.LH
06	DATE	06/05	INFO. FAX. DOC. # 241102354
APPROVED:	DATE		SCALE: 1/1
			TRAINING TYPE: INSTALLATION/FABRICK
			SIZE: A SH: 1 OF 1

4110ADA