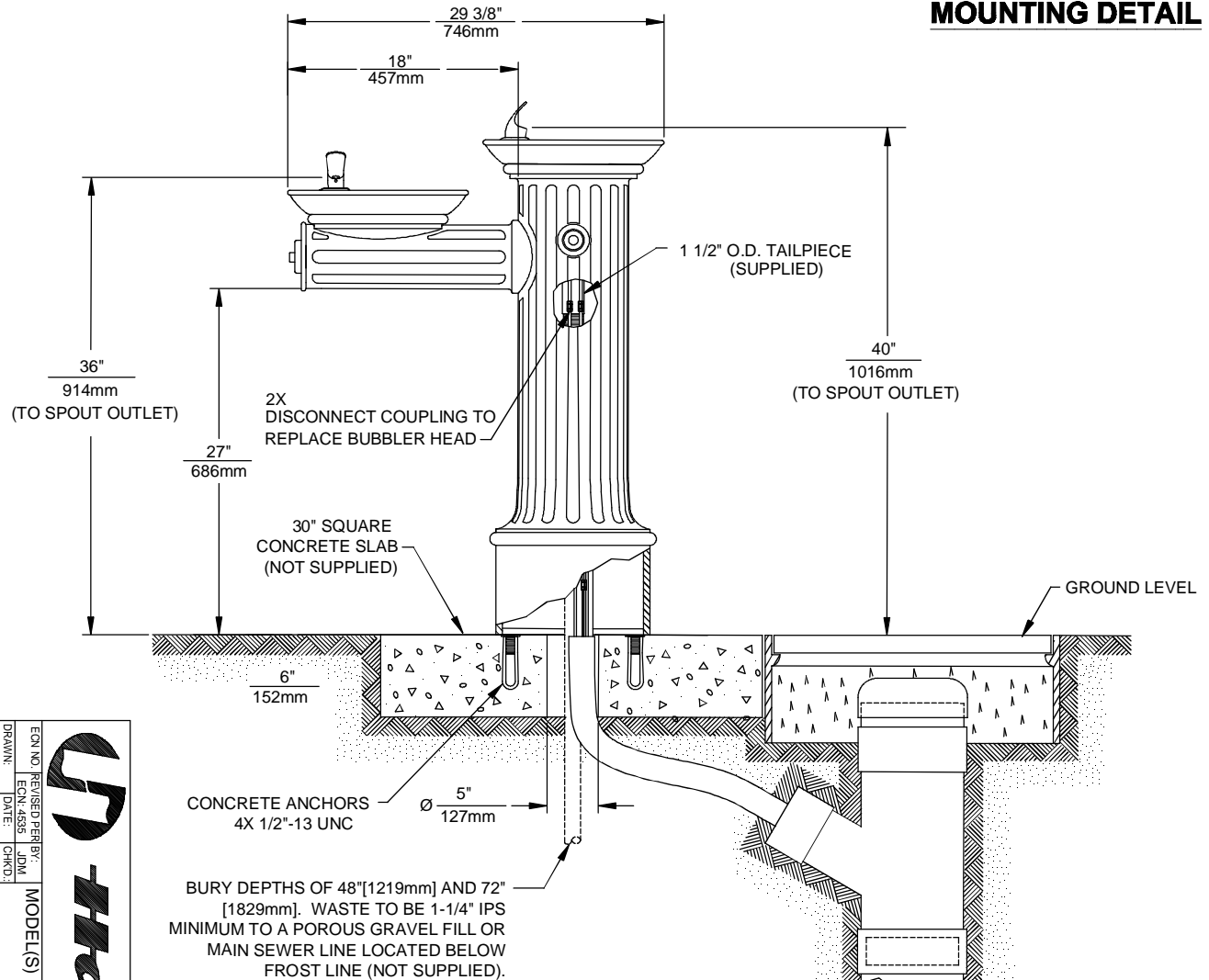


MOUNTING DETAIL



BURY DEPTHS OF 48" [1219mm] AND 72" [1829mm]. WASTE TO BE 1-1/4" IPS MINIMUM TO A POROUS GRAVEL FILL OR MAIN SEWER LINE LOCATED BELOW FROST LINE (NOT SUPPLIED).

6518.2FR VALVE ASSY



1456 KLEPPE LANE
SPARKS, NEVADA 89431
(775) 359-4712 FAX (775) 359-7424
E-MAIL: HAWS@HAWS.CO.COM
WEBSITE: WWW.HAWS.CO.COM

ECN NO.	REVISED PER BY:	MODEL(S)	PART NUMBER
DRAWN: E	DATE: JDM		0002077369.D
PM	CHKD: JWC		REVISION
APPROVED: FV	DATE: 04/21/15	SCALE: 1:14	DRAWING TYPE: INSTALLATION
		SIZE: A	SHEET 1 OF 1
			9