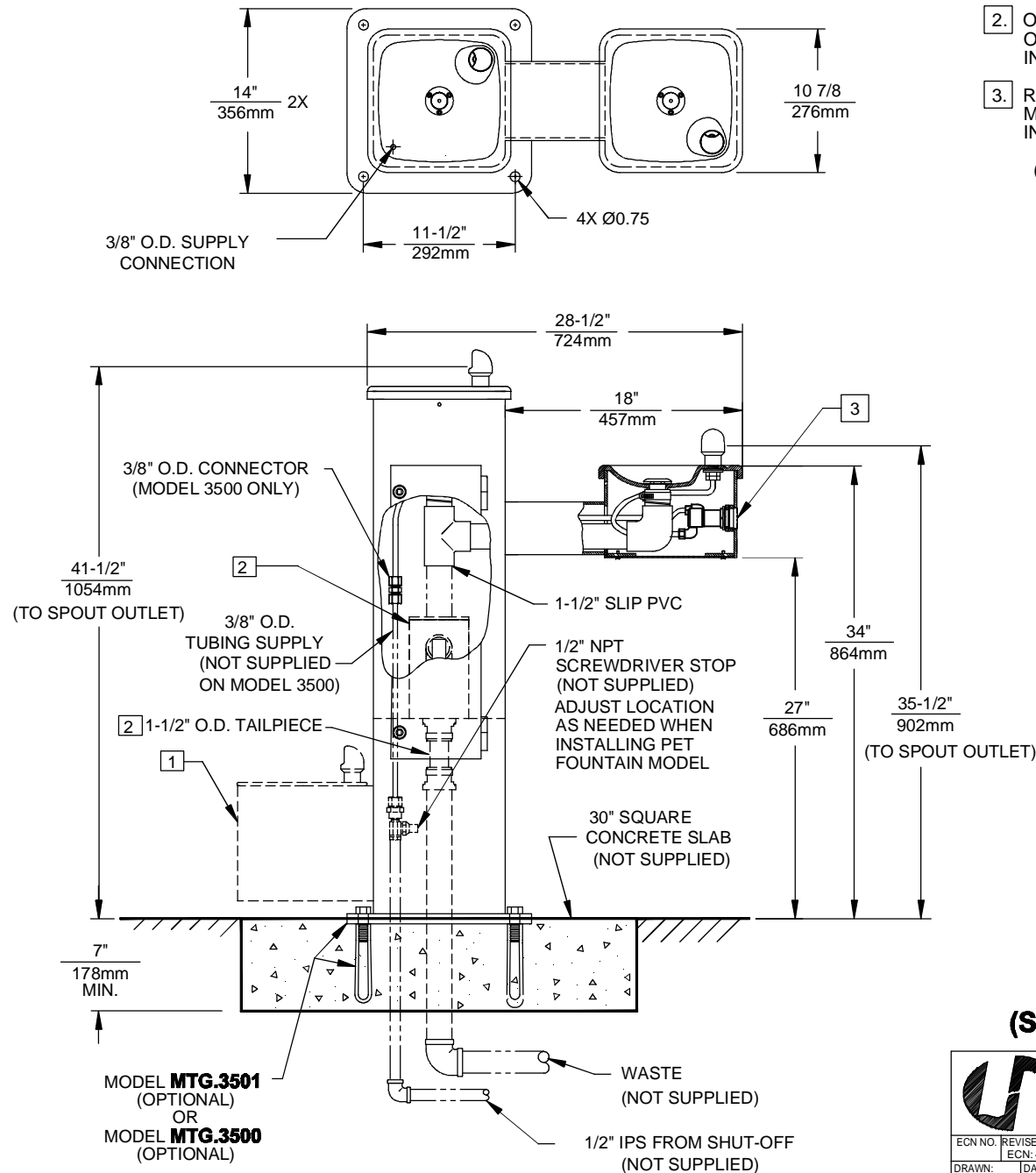



NOTES: (UNLESS OTHERWISE SPECIFIED)

1. PET FOUNTAIN IS STANDARD FOR MODEL 3500D ONLY. SEE SHEET 2 FOR INSTALLATION DETAILS.
2. OPTIONAL SAND TRAP MODEL 6635 W/ MOUNTING PLATE AND 1-1/2" O.D. TAILPIECE. SEE MODEL 6635 FOR ADDITIONAL INSTALLATION INSTRUCTIONS.
3. REFER TO 5874SS OPERATION AND MAINTENANCE MANUAL FOR PUSH BUTTON AND VALVE INSTALLATION/MAINTENANCE INSTRUCTIONS.

(NOTES CONTINUED ON SHEET 2)

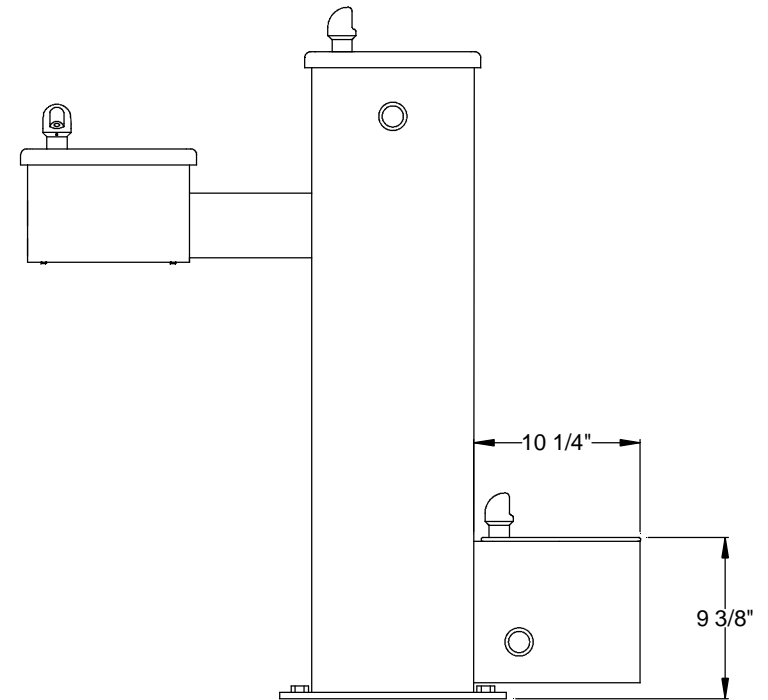
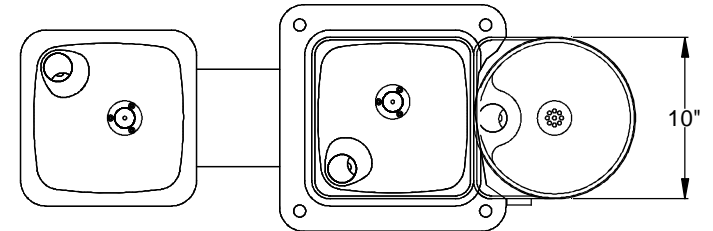
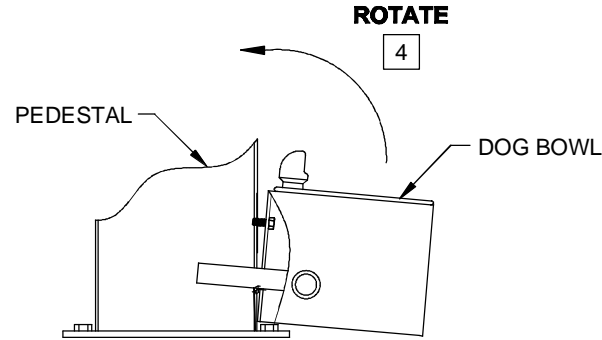


**MODEL 3500 SHOWN
(SEE SHEET 2 FOR MODEL 3500D)**

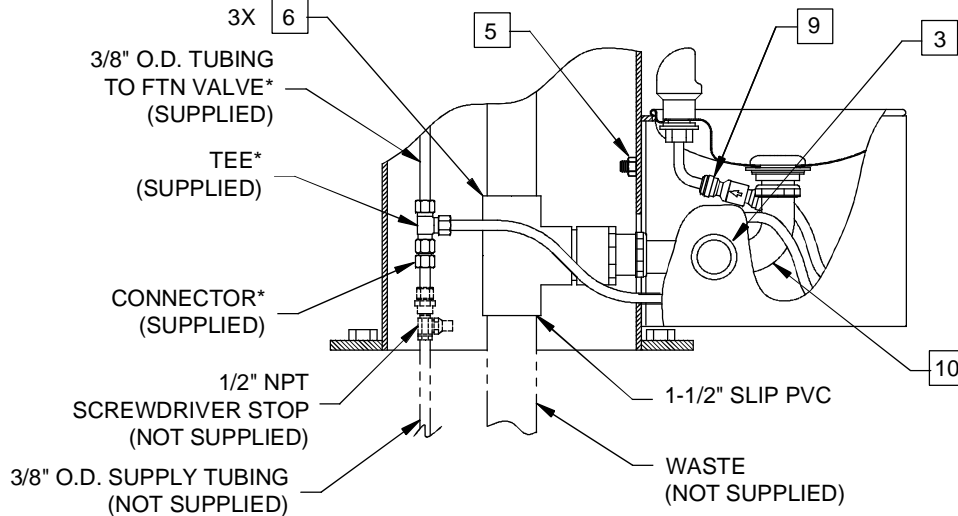
				1455 KLEPPE LANE SPARKS, NEVADA 89431 (775) 359-4712 FAX (775) 359-7424 E-MAIL: HAWS@HAWSO.COM WEBSITE: WWW.HAWSO.COM			
ECN NO.	REVISED PER	BY:	MODEL(S)	PART NUMBER			
	ECN: 4837	HM					
DRAWN:	DATE:	CHKD.:					
F. VASQUEZ	02/04/99						
APPROVED:	DATE:						
SCALE: 1:13				DRAWING TYPE:	INSTALLATION	SIZE: A	SHEET 1 OF 2

- 4 SLIDE DOWELS ON DOG BOWL INTO HOLES OF PEDESTAL AND ROTATE UPWARD.
- 5 INSTALL 7/16-14UNC NUT ON STUD AND TIGHTEN 3/4 TURN PAST HAND TIGHT.
- 6 BOND JOINTS WITH PVC CEMENT AND PRIMER.
7. APPLY SUPPLY HOSE AND WASTE LINE.
8. TEST SYSTEM AFTER ASSEMBLY.
- 9 A CHECK VALVE IS INSTALLED IN THIS LOCATION TO PREVENT CROSS CONNECTION BETWEEN BUBBLERS.


- 10 NOTE: DRAINAGE ASSEMBLY SLIDES VERTICALLY ON HOLDER. UPON COMPLETION OF INSTALLATION, PUSH UP ON BOTTOM OF ELBOW TO ENSURE POSITIVE DRAINAGE OF WASTE.



**MODEL 3500D SHOWN
(SEE SHEET 1 FOR MODEL 3500)**



***NOTE: TEE SHOWN ASSEMBLED FOR REFERENCE ONLY.
POSITION TEE AND TRIM TUBING AS NEEDED TO FIT
INSTALLATION APPLICATION.**

		1455 KLEPPE LANE SPARKS, NEVADA 89431 (775) 359-4712 FAX (775) 359-7424 E-MAIL: HAWS@HAWS.CO.COM WEBSITE: WWW.HAWS.CO.COM	
		ECN NO. REVISED PER BY: MODEL(S) ECN: 4837 HM	
DRAWN: M.F. DATE: 06/06/00 APPROVED:	DATE: 06/06/00 CHKD.: DATE:	3500/3500D	PART NUMBER 0002077448.D DRAWING NO. 13962C REV 14
SCALE: 1:12 DRAWING TYPE: INSTALLATION		SHEET 2 OF 2	SIZE: A