



INSTALLATION, OPERATION & MAINTENANCE INSTRUCTION

1455 Kleppe Lane ♦ Sparks, NV 89431-6467 ♦ (775) 359-4712 ♦ Fax (775) 359-7424
E-mail: haws@hawsco.com ♦ website: www.hawsco.com

No. 2077073(18)

Model 3150FR Drinking Fountain

NOTE TO INSTALLER: Please leave this information with the Maintenance Department.

LIMITED WARRANTY

HAWS warrants that this specific product is guaranteed against defective material or poor workmanship for a period of **one year from date of shipment**. HAWS liability under this warranty shall be discharged by furnishing without charge F.O.B. HAWS Factory any goods, or part thereof, which shall appear to the Company upon inspection to be of defective material or not of first class workmanship, provided that claim is made in writing to Haws within a reasonable period after receipt of the product. Where claims for defects are made, the defective part or parts shall be delivered to the Company, prepaid, for inspection. HAWS will not be liable for the cost of repairs, alterations or replacements, or for any expense connected therewith made by the owner or his agents, except upon written authority from HAWS, Sparks, Nevada. HAWS will not be liable for any damages caused by defective materials or poor workmanship, except for replacements, as provided above. Buyer agrees that HAWS shall not be liable for general, special, or consequential damages claimed to arise under the contract of sale. The drinking fountain manufactured by HAWS is warranted to function if installation and maintenance instructions provided are adhered to. The units also must be used for the purpose for which they were intended.

**NO OTHER WARRANTIES EXPRESSED OR IMPLIED ARE AUTHORIZED,
PROVIDED OR GIVEN BY HAWS.**

**SHOULD YOU EXPERIENCE DIFFICULTY WITH THE INSTALLATION OF THIS
MODEL PLEASE CALL:**

TECHNICAL SUPPORT: 1-800-766-5612

FOR CUSTOMER SERVICE: 1-888-640-4297

RECOMMENDED TOOLS: Hack saw, pipe joint sealant, screwdriver, level, 12" adjustable wrench, 10" pipe wrench, 5/64" hex key wrench, 9/16", 1/2", 7/16" socket wrench or open end wrench.

LOCATION OF UNIT: The Model 3150FR Drinking Fountain is a wheelchair accessible drinking water facility. The height dimensions shown, meet current ADA requirements. When installing this unit, local, state or federal codes should be adhered to. If height other than shown is required, then dimensions must be adjusted accordingly.

SUPPLY LINE: The minimum recommended line size is 1/2"IPS with 30-90 psi (2-6 ATM) flowing pressure. Where sediment or mineral content is a problem, an inlet filter is recommended.

PLUMBING CONNECTIONS: Waste outlet is female 1-1/2" Slip PVC.

MAINTENANCE: Periodically clean the strainer. Refer to 6518.2FR Valve Operation and Maintenance Sheet for additional information.

TROUBLESHOOTING 3150FR with 6518.2FR

| PROBLEM | REPAIR CHECKLIST |
|-------------------------------|---|
| 1. Insufficient bubbler flow. | 1a. Check that inlet screwdriver stop valve is wide open. (Customer supplied). Turn counterclockwise. b. Verify minimum 30psi flowing supply pressure. c. Adjust valve to increase flow. See 6518.2FR Valve Manual. |

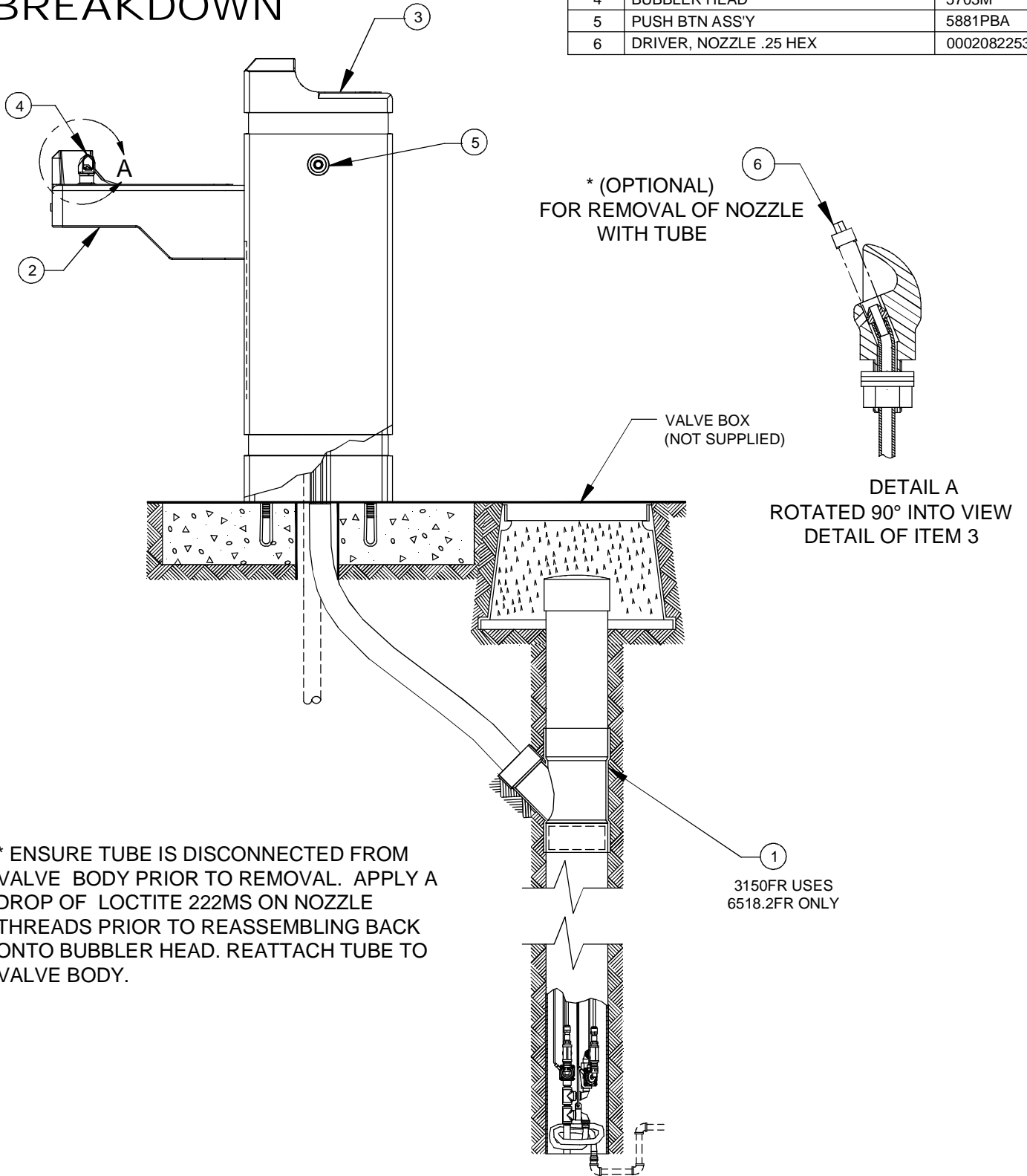
General Notes:

Before tightening nut and ferrule assembly, push tubing into fitting until it bottoms out to ensure correct engagement with O-Ring.


For more information about Haws products, see our website: www.hawSCO.com

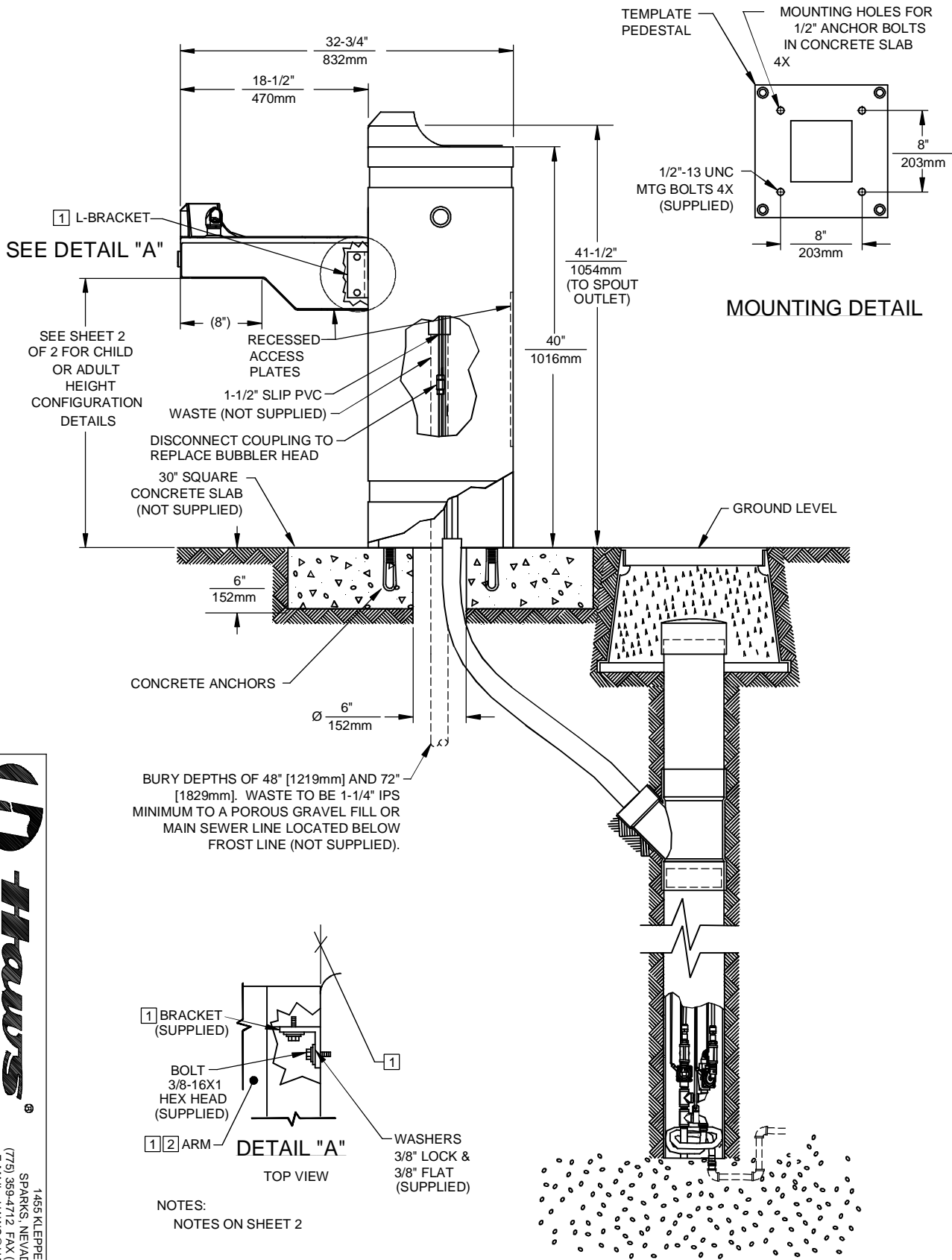
| ITEM | DESCRIPTION | PART NO. |
|------|------------------------|------------|
| 1 | VALVE | 6518.2FR |
| 2 | BOTTOM PLATE | PBM1047 |
| 3 | STRAINER ASSY | 6466 |
| 4 | BUBBLER HEAD | 5703M |
| 5 | PUSH BTN ASS'Y | 5881PBA |
| 6 | DRIVER, NOZZLE .25 HEX | 0002082253 |

PARTS BREAKDOWN

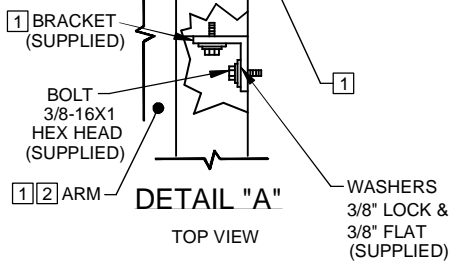


WHEN ORDERING PARTS PLEASE SPECIFY MODEL NUMBER.

| | | | |
|--|------------------------------|---|---|
|  Haws [®] | | 1455 KLEPPE LANE SPARKS, NEVADA 89431 (775) 359-4712 FAX (775) 359-7424 E-MAIL: HAWS@HAWSO.COM WEBSITE: WWW.HAWSO.COM | |
| | | ECN NO. REVISED PER BY ECN: 4535 VWC | MODEL(S) 3150FR |
| DRAWN D. OLLOM DATE 11/25/06 CHKD VWC | APPROVED FV DATE 04/21/15 | SCALE: 1:6 | DRAWING TYPE: PARTS BREAKDOWN SIZE: A SHEET 1 OF 1 |
| | | REVISION 18 | |



BURY DEPTHS OF 48" [1219mm] AND 72" [1829mm]. WASTE TO BE 1-1/4" IPS MINIMUM TO A POROUS GRAVEL FILL OR MAIN SEWER LINE LOCATED BELOW FROST LINE (NOT SUPPLIED).



NOTES:
NOTES ON SHEET 2

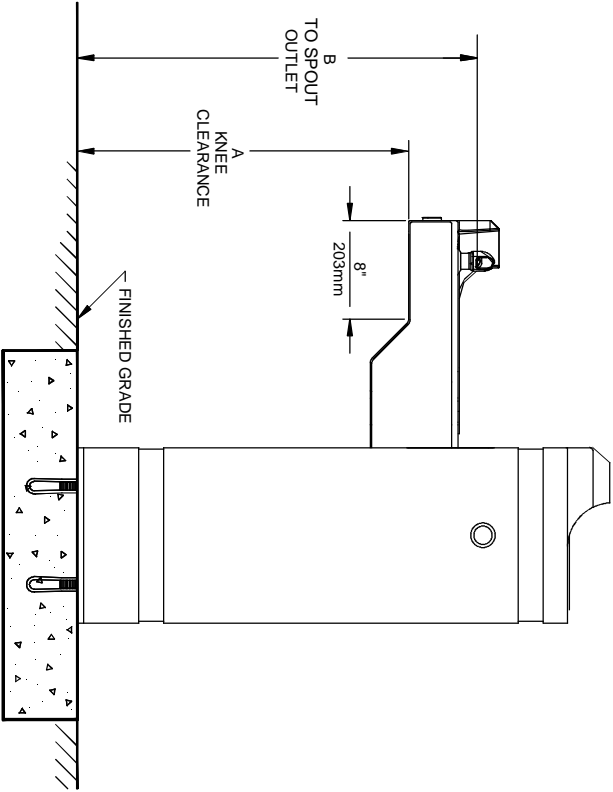


1455 KLEPPE LANE
SPARKS, NEVADA 89431
(775) 359-4712 FAX (775) 359-7424
E-MAIL: HAWS@HAWS.CO.COM
WEBSITE: WWW.HAWS.CO.COM

| | | |
|--------------|---------------|--------------|
| REVISED PER: | MODEL(S) | 3150FR |
| CON: 4535 | DATE: | 09/29/92 |
| CHKD: | SCALE: | 1:8 |
| DATE: | DRAWING TYPE: | INSTALLATION |
| APPROVED: | SIZE: | A |
| DATE: | SHEET: | 1 OF 2 |
| REVISED PER: | PART NUMBER: | 0002077073.D |
| CON: 4535 | DATE: | 09/29/92 |
| CHKD: | SCALE: | 1:8 |
| DATE: | DRAWING TYPE: | INSTALLATION |
| APPROVED: | SIZE: | A |
| DATE: | SHEET: | 1 OF 2 |

NOTES:

- [1] **PROCEDURE FOR ASSEMBLING ARM TO PEDESTAL:**
IMPORTANT: L-BRACKETS ARE PRE-ASSEMBLED AND **MUST NOT BE** LOOSENED FOR ANY REASON.
STEP 1: ATTACH ENTIRE ARM ASSEMBLY TO MOUNTING PLATE ON PEDESTAL USING 3/8"-16 X 1" BOLTS AND WASHERS (SUPPLIED) AND TIGHTEN SECURELY IN PLACE.
STEP 2: (OPTIONAL) APPLY CAULKING AS NEEDED TO FILL ANY GAP PRESENT BETWEEN ARM AND PEDESTAL.
- [2] SIDE ARM IS ADJUSTABLE TO ACCOMMODATE EITHER CHILD OR ADULT HEIGHTS (SEE "AVAILABLE ARM HEIGHTS" CHART).
- [3] BASED ON DESIRED HEIGHT (CHILD OR ADULT) OF ARM, ORIENT BACKPLATE AS SHOWN IN FIGURE 1 AND USE APPROPRIATE SHADED HOLES.
- [4] WASTE ASSEMBLY IS SUPPLIED DISASSEMBLED. THE SHORTER OF THE TWO PIECES IS FOR THE ARM DRAIN, AND MUST BE INSTALLED SO THAT ANY BEND IN THE FLEX TUBING WILL ALLOW WATER TO DRAIN COMPLETELY. THE LONGER IS FOR THE PEDESTAL DRAIN AND IS SUPPLIED AT THE LENGTH REQUIRED TO ASSEMBLE THE UNIT WITH THE ARM AT CHILD HEIGHT. IN ORDER TO ASSEMBLE AT ADULT HEIGHT, 3" MUST BE CUT FROM THE END OF THE FLEX TUBING PRIOR TO ASSEMBLY. TEE IS TO BE GLUED TO THE FLEX TUBING WASTE ARMS USING PVC PIPE CEMENT.



| AVAILABLE ARM HEIGHTS | | |
|-----------------------|-----------------|-----------------|
| DIM | ADULT ADA | CHILD ADA |
| A | 27" / 688mm | 24" / 610mm |
| B | 32-3/4" / 832mm | 29-3/4" / 756mm |

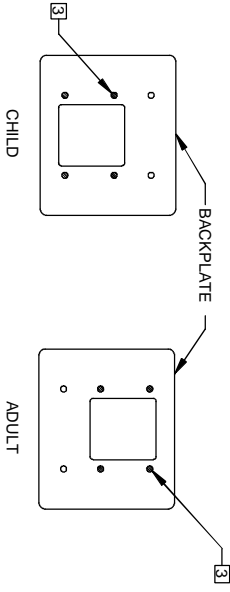
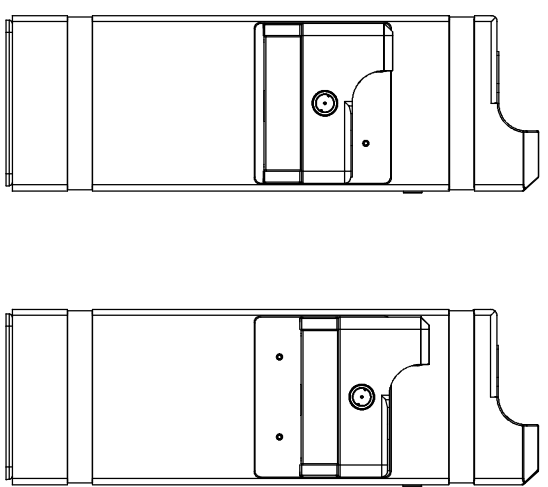
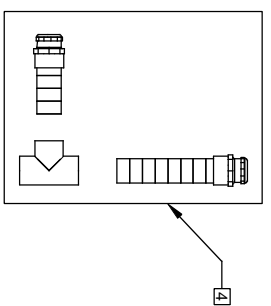


FIGURE 1

CHILD OR ADULT HEIGHT CONFIGURATION DETAILS



1455 KLEPPE LANE
 SPARKS, NEVADA, 89431
 (775) 359-4712 FAX (775) 359-7424
 E-MAIL: HAWS@HAWS.CO.COM
 WEBSITE: WWW.HAWS.CO.COM

| | | |
|----------------------------|----------------|---------------|
| ECN NO. REVISED PER BY: | MODEL(S) | 3150FR |
| DRAWN: EON:4535 | DATE: 09/28/92 | CHKD: VWC |
| APPROVED: TV | DATE: 04/21/15 | SCALE: 1:13 |
| DRAWING TYPE: INSTALLATION | | SIZE: A |
| PART NUMBER: 0002077073.D | | SHEET: 2 OF 2 |
| REVISION: 18 | | |