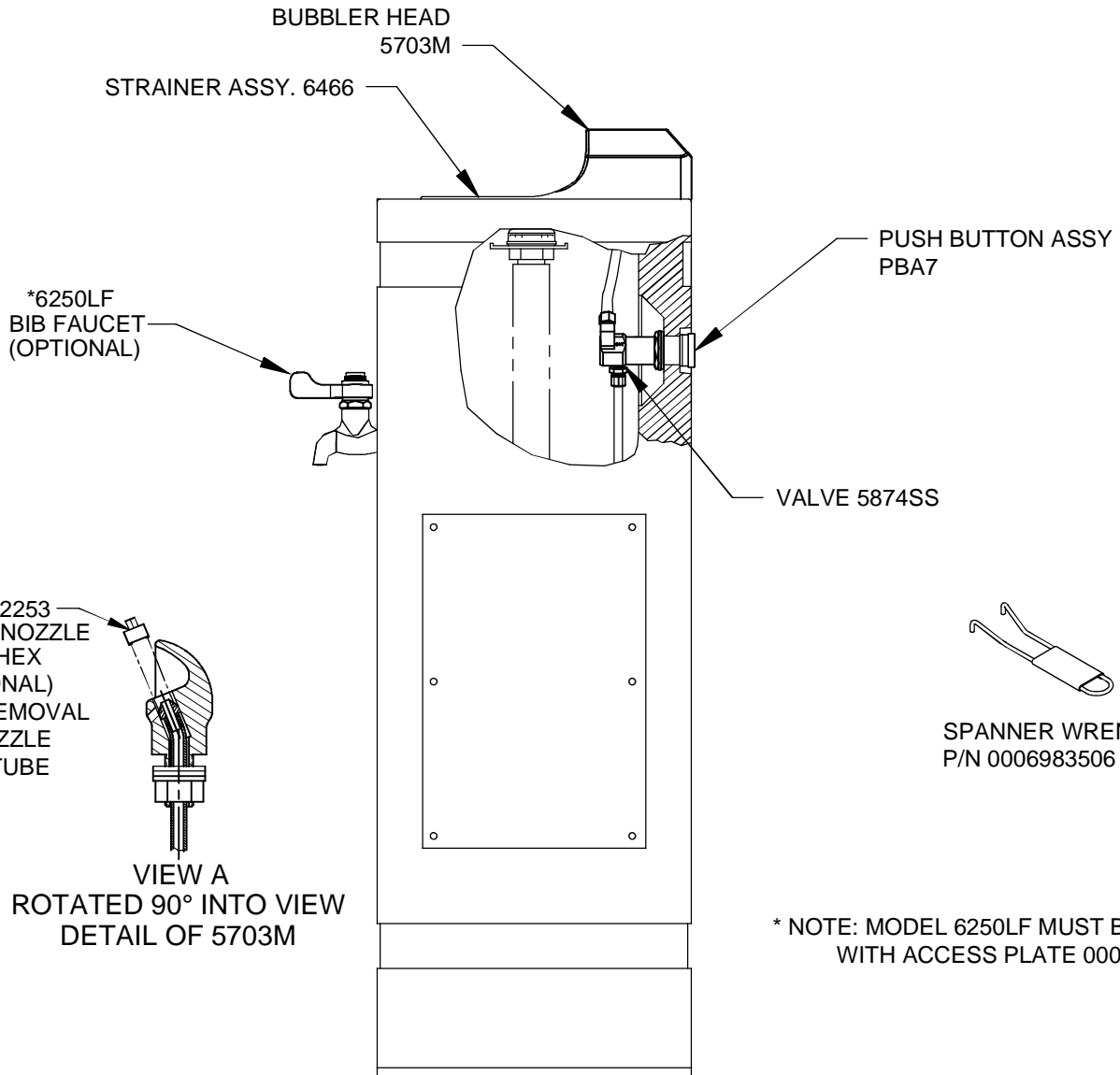


PARTS BREAKDOWN



** 0002082253
DRIVER, NOZZLE
.25 HEX
(OPTIONAL)
FOR REMOVAL
OF NOZZLE
WITH TUBE


VIEW A
ROTATED 90° INTO VIEW
DETAIL OF 5703M

SPANNER WRENCH
P/N 0006983506

* NOTE: MODEL 6250LF MUST BE USED
WITH ACCESS PLATE 0004499489

** ENSURE TUBE IS DISCONNECTED FROM VALVE BODY PRIOR TO REMOVAL. APPLY A DROP OF LOCTITE 222MS ON NOZZLE THREADS PRIOR TO REASSEMBLING BACK ONTO BUBBLER HEAD. REATTACH TUBE TO VALVE BODY.

WHEN ORDERING PARTS PLEASE SPECIFY MODEL NUMBER.

 Haws [®]		1455 KLEPPE LANE SPARKS, NEVADA 89431 (775) 359-4712 FAX (775) 359-7424 E-MAIL: HAWS@HAWSCO.COM WEBSITE: WWW.HAWSCO.COM	
		ECN NO. REVISED PER BY ECN: 4933 HM	MODEL(S) 3121
DRAWN D. OLLOM	DATE 11/25/95	CHKD FV	REVISION 16
APPROVED FV	DATE 10/21/14	SCALE: 1:4	DRAWING TYPE: PARTS BREAKDOWN
		SIZE: A	SHEET 1 OF 1