



model 3060FR

Freeze-Resistant Concrete Pedestal Fountain

FEATURES & BENEFITS

CONSTRUCTION

Heavy-duty wire reinforced concrete construction with exposed aggregate finish provide a perfect addition to outside environments, along with a vandal-resistant access plate for added peace of mind. Stainless steel basin with a high-polished finish compliments almost any setting, and it also resists stains and corrosion.

FREEZE-RESISTANT VALVE

Fully engineered system with the pneumatic operated freeze-resistant valve installed below frost line to drain water to non-freezing depth allowing fountain to function year-round. Assembly can be lifted to surface and lowered back into casing for easy maintenance without disturbing the fountain.

BUBBLER HEAD

Polished chrome-plated brass bubbler head is equipped with a shielded, anti-squirt orifice that provides a steady sanitary source of water.



OPTIONS

To see all options for this model, visit www.hawesco.com

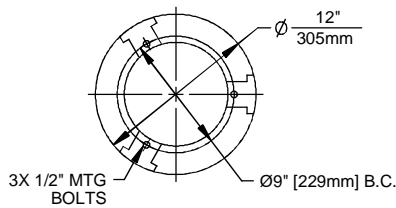
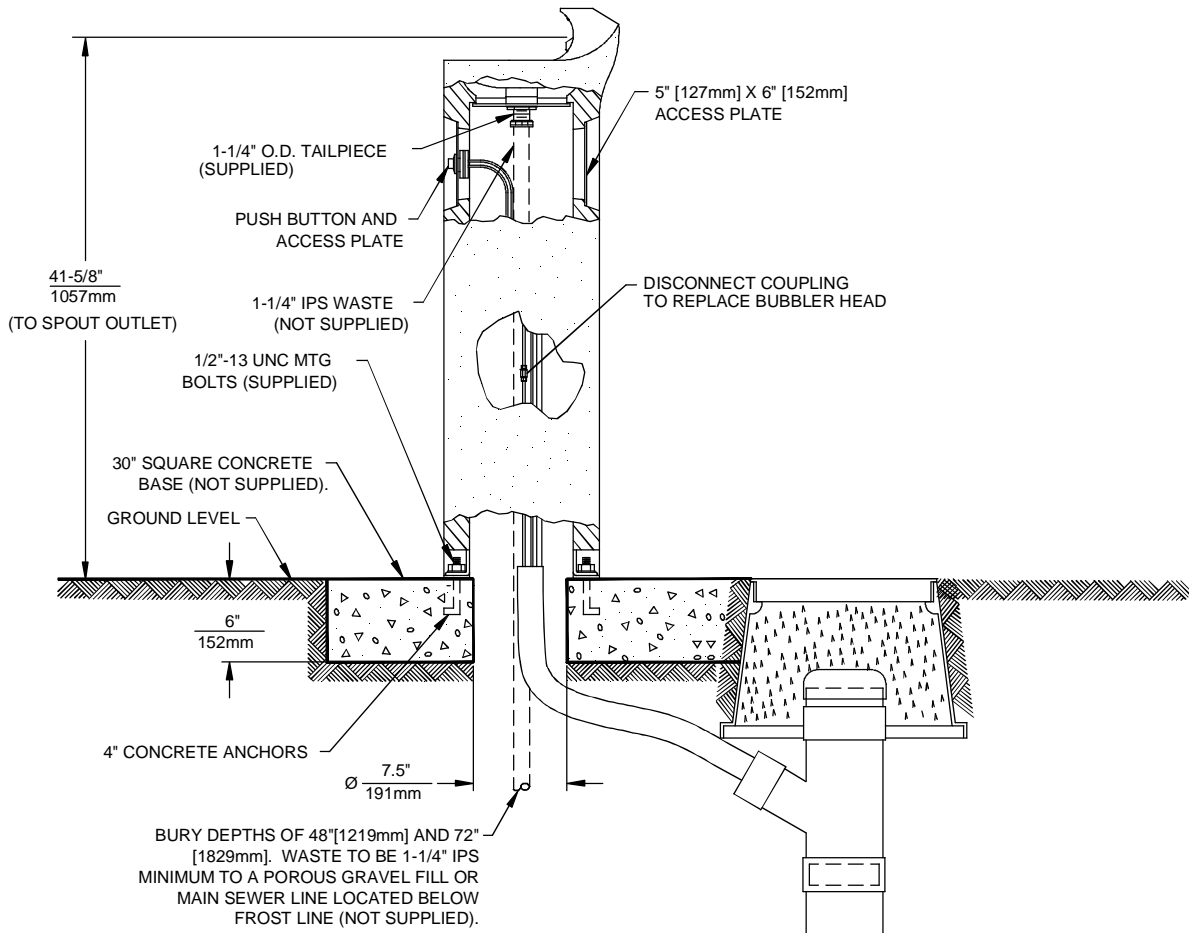
SPECIFICATIONS

Model 3060FR freeze-resistant circular concrete pedestal drinking fountain shall include a polished stainless steel basin, polished chrome-plated push-button, polished chrome-plated brass vandal-resistant bubbler head protected by a hood extension, polished chrome-plated brass vandal-resistant waste strainer, Portland Gray exposed aggregate concrete finish with wire reinforcement, integral mounting feet, vandal-resistant stainless steel access plate, and 1-1/4" O.D. tailpiece. REQUIRES MODEL 6518FR PRICED SEPARATELY.

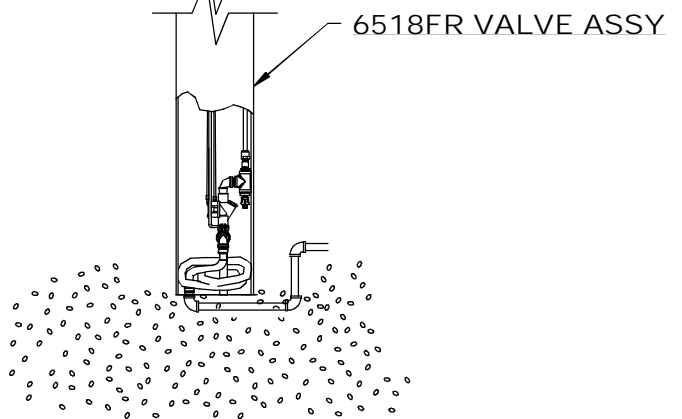
APPLICATIONS

Perfect for either public or private settings, our concrete series is a great fit in "open-air" environments. Suitable in areas where weather conditions may be cause for concern, this series stands strong in harsh environments. Wire reinforced concrete design not only protects from corrosion, its Portland Gray color makes it recognizable enough to locate without compromising the outdoor atmosphere. This type of pedestal drinking fountain may also be placed in a variety of settings such as: parks, schools, and other recreational outdoor environments where the temperature may drop into freezing conditions. Haws manufactures drinking fountains and electric water coolers to be lead-free by all known definitions including NSF/ANSI Standard 61, Section 9, NSF/ANSI 372, California Proposition 65, and the Federal Safe Drinking Water Act. Product is compliant to California Health and Safety Code 116875 (AB 1953-2006).





MOUNTING DETAIL



Haws		1455 KLEPPE LANE	
SPARKS, NEVADA, 89431		(775) 359-4712 FAX (775) 359-7424	
E-MAIL: HAWWS@HAWSCO.COM		WEBSITE: WWW.HAWSCO.COM	
EON NO.:	REVISED PER BY:	MODEL(S)	
DRAWN:	DATE:		
CHECKED:	DATE:		
APPROVED:	DATE:		
SCALE:	DRAWING TYPE:	INSTALLATION	SIZE: A
1:1			SHEET 1 OF 1
		3060FR	
		PART NUMBER	
		0002077036.D	
		REVISION:	10