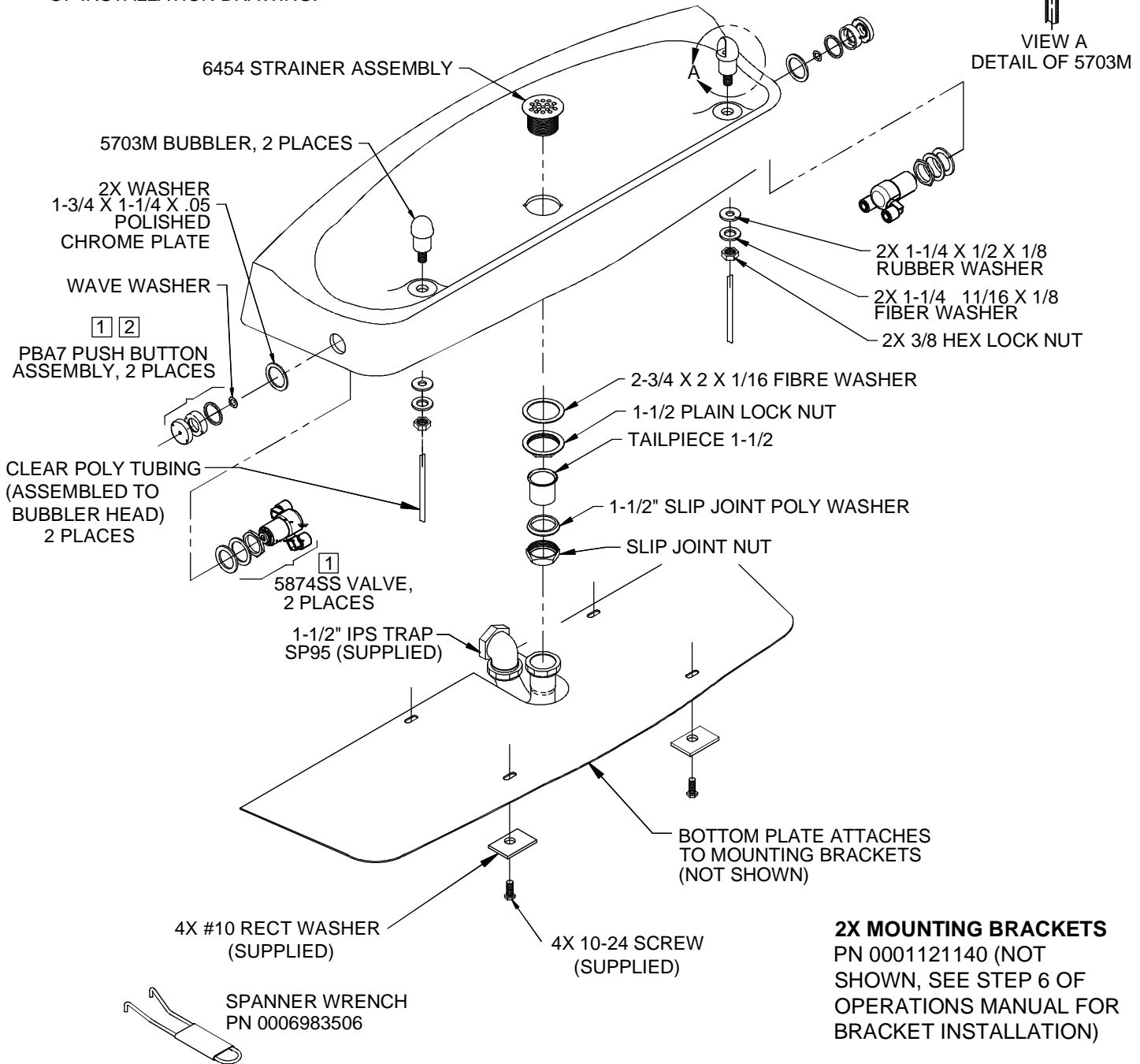
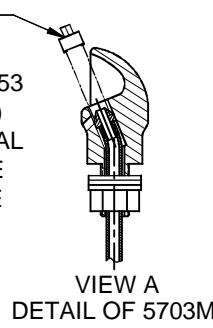


PARTS BREAKDOWN

NOTE:

- 1 REFER TO 5874SS/VRK5874 OPERATION AND MAINTENANCE MANUAL FOR INSTALLATION INSTRUCTIONS.
- 2 MUST APPLY 1 DOT OF LOCTITE 222MS THREADLOCKER ON FEMALE THREADS OF PUSH BUTTON. SEE 5874SS OPERATION AND MAINTENANCE MANUAL (PAGE 5 OF 5) FOR PROPER APPLICATION PROCEDURE.
3. FOR TUBING ROUTING AND LENGTHS SEE SHEET 2 OF INSTALLATION DRAWING.

DRIVER,
NOZZLE
.25 HEX
PN 0002082253
(OPTIONAL)
FOR REMOVAL
OF NOZZLE
WITH TUBE



		1455 KLEPPE LANE SPARKS, NEVADA 89431 (775) 359-4712 FAX (775) 359-7424 E-MAIL: HAWS@HAWSO.COM WEBSITE: WWW.HAWSO.COM	
		ECN NO. REVISED PER BY: HM ECN: 4797 DATE: 06/26/97 CHKD:	MODEL(S) 1430 TWO BUBBLER FOUNTAIN
DRAWN: D. OLLOM APPROVED:		DATE:	DRAWING NO.: 12796C00 17
WHEN ORDERING PARTS PLEASE SPECIFY YOUR MODEL NUMBER		SCALE: 1:5.5	DRAWING TYPE: PARTS BREAKDOWN
©2012 Haws Corporation - All Rights Reserved HAWS® and other trademarks used in these materials are the exclusive property of Haws Corporation.		SIZE: A	SHEET 1 OF 1