



INSTALLATION, OPERATION & MAINTENANCE INSTRUCTIONS

1455 Kleppe Lane ♦ Sparks, NV 89431-6467 ♦ (775) 359-4712 ♦ Fax (775) 359-7424
E-mail: haws@hawsco.com ♦ website: www.hawsco.com

No. 2077601(6)

Model 1409 Drinking Fountain

NOTE TO INSTALLER: Please leave this information with the Maintenance Department.

LIMITED WARRANTY

HAWS warrants that this specific product is guaranteed against defective material or poor workmanship for a period of **one year from date of shipment**. HAWS liability under this warranty shall be discharged by furnishing without charge F.O.B. HAWS Factory any goods, or part thereof, which shall appear to the Company upon inspection to be of defective material or not of first class workmanship, provided that claim is made in writing to Haws within a reasonable period after receipt of the product. Where claims for defects are made, the defective part or parts shall be delivered to the Company, prepaid, for inspection. HAWS will not be liable for the cost of repairs, alterations or replacements, or for any expense connected therewith made by the owner or his agents, except upon written authority from HAWS, Sparks, Nevada. HAWS will not be liable for any damages caused by defective materials or poor workmanship, except for replacements, as provided above. Buyer agrees that HAWS shall not be liable for general, special, or consequential damages claimed to arise under the contract of sale. The drinking fountain manufactured by HAWS is warranted to function if installation and maintenance instructions provided are adhered to. The units also must be used for the purpose for which they were intended.

**NO OTHER WARRANTIES EXPRESSED OR IMPLIED ARE AUTHORIZED,
PROVIDED OR GIVEN BY HAWS.**

**SHOULD YOU EXPERIENCE DIFFICULTY WITH THE INSTALLATION OF THIS
MODEL PLEASE CALL:**

TECHNICAL SUPPORT: 1-800-766-5612

FOR CUSTOMER SERVICE: 1-888-640-4297

RECOMMENDED TOOLS: Hack saw, pipe joint sealant, screwdriver, level, 12" adjustable wrench, 10" pipe wrench, 5/64" hex key wrench, 9/16", 1/2", 7/16" socket wrench or open end wrench.

LOCATION OF UNIT: The Model 1409 Drinking Fountain is a wheelchair accessible drinking water facility. The height dimensions shown, meet current ADA requirements. When installing this unit, local, state or federal codes should be adhered to for installation heights, as well as waste and supply requirements, other than shown on the drawing.

SUPPLY LINE: The minimum recommended line size is 1/2"IPS with 30-90 psi (2-6 ATM) flowing pressure. Where sediment or mineral content is a problem, an inlet filter is recommended.

PLUMBING CONNECTIONS: Inlet is 3/8" O.D. tubing fitting. Waste outlet is female 1-1/2" IPS.

MAINTENANCE: Periodically clean the strainer. Refer to 5874SS Valve Manual for more information.

TROUBLESHOOTING

PROBLEM		REPAIR CHECKLIST	
1.	Insufficient bubbler flow.	1a.	Check that inlet screwdriver stop valve is in wide-open position.
		1b.	Verify minimum 30 psi flowing supply pressure.
		1c.	Clean strainer. See 5874SS Valve Manual.
		1d.	Adjust valve to increase flow. Use front adjust screw or see 5874SS Valve Manual.

GENERAL NOTES:

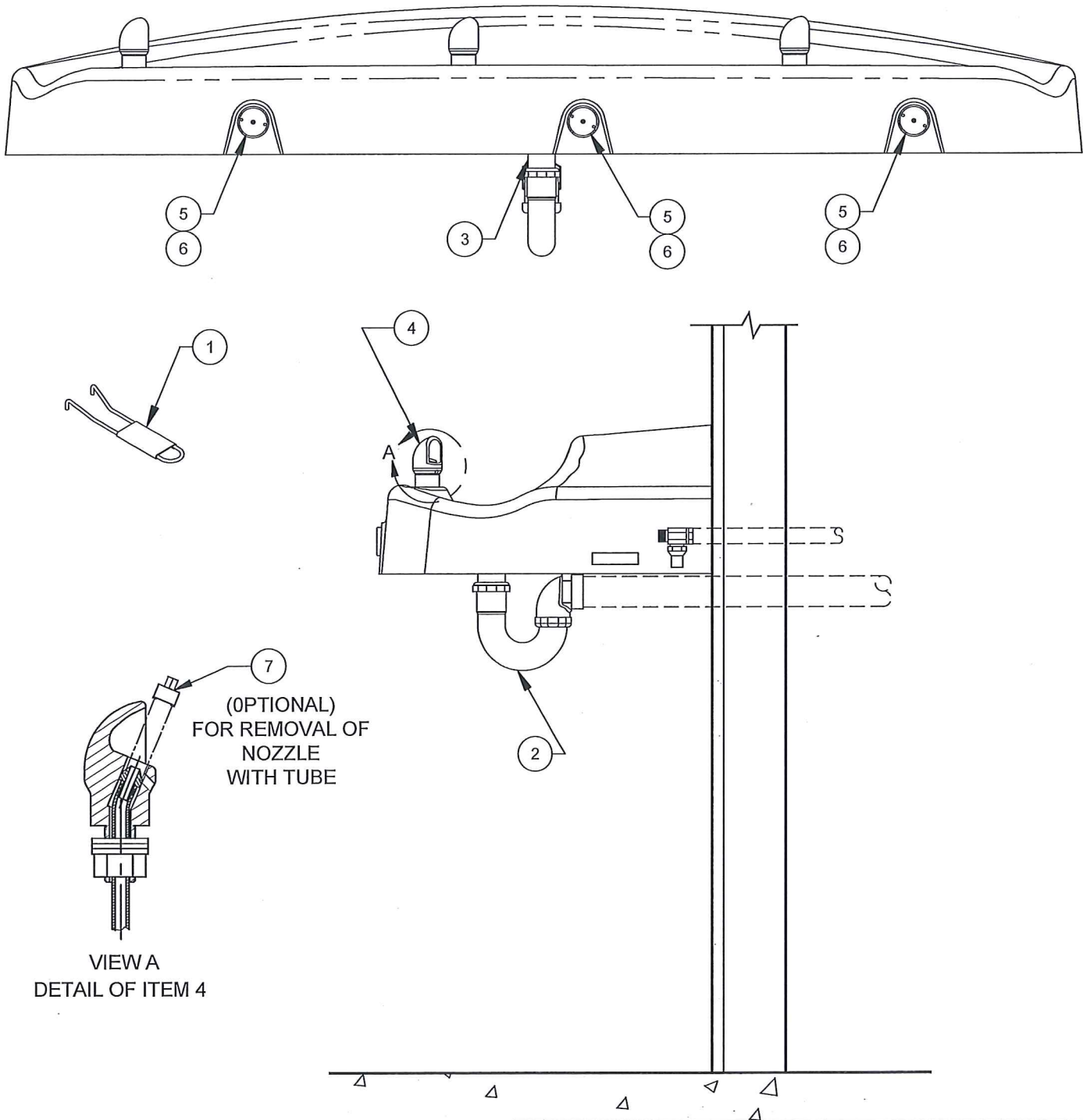
1. For all plastic push-in type fitting connections, only connect NSF-61 copper or plastic tubing. Stainless steel or glass tubing is not recommended. The following assembly instructions must be followed to ensure a watertight connection:
 - a. Cut tubing square and clean.
 - b. Mark from end of tube the length of insertion (See table below).
 - c. Push tube into the fitting until it bottoms out.
 - d. To remove, depress collet and pull tubing out.

Tube Sizes	O.D. Tolerance	Insertion Depth
1/4"	±.005"	11/16"
3/8"	±.005"	3/4"
1/2"	±.005"	7/8"

For more information about Haws products, see our website: www.hawscos.com

ITEM	DESCRIPTION	PART NO.
1	SPANNER WRENCH	0006983506
2	TRAP	SP95
3	STRAINER ASSY	6454
4	BUBBLER HEAD	5703M
5	PUSH BTN ASS'Y	PBA7
6	VALVE	5874SS
7	DRIVER, NOZZLE .25 HEX	0002082253

PARTS BREAKDOWN



VIEW A
DETAIL OF ITEM 4



Haws®

1455 KLEPPE LANE
SPARKS, NEVADA 89431
(775) 359-4712 FAX (775) 359-7424
E-MAIL: HAWS@HAWSO.COM
WEBSITE: WWW.HAWSO.COM

ECN NO.	REVISED PER	BY
ECN: 4828	DATE	CHKD
DRAWN	DATE	CHKD
M. DAVIS	12/14/05	12/14/05
APPROVED	DATE	CHKD
	12/14/05	12/14/05

MODEL(S)

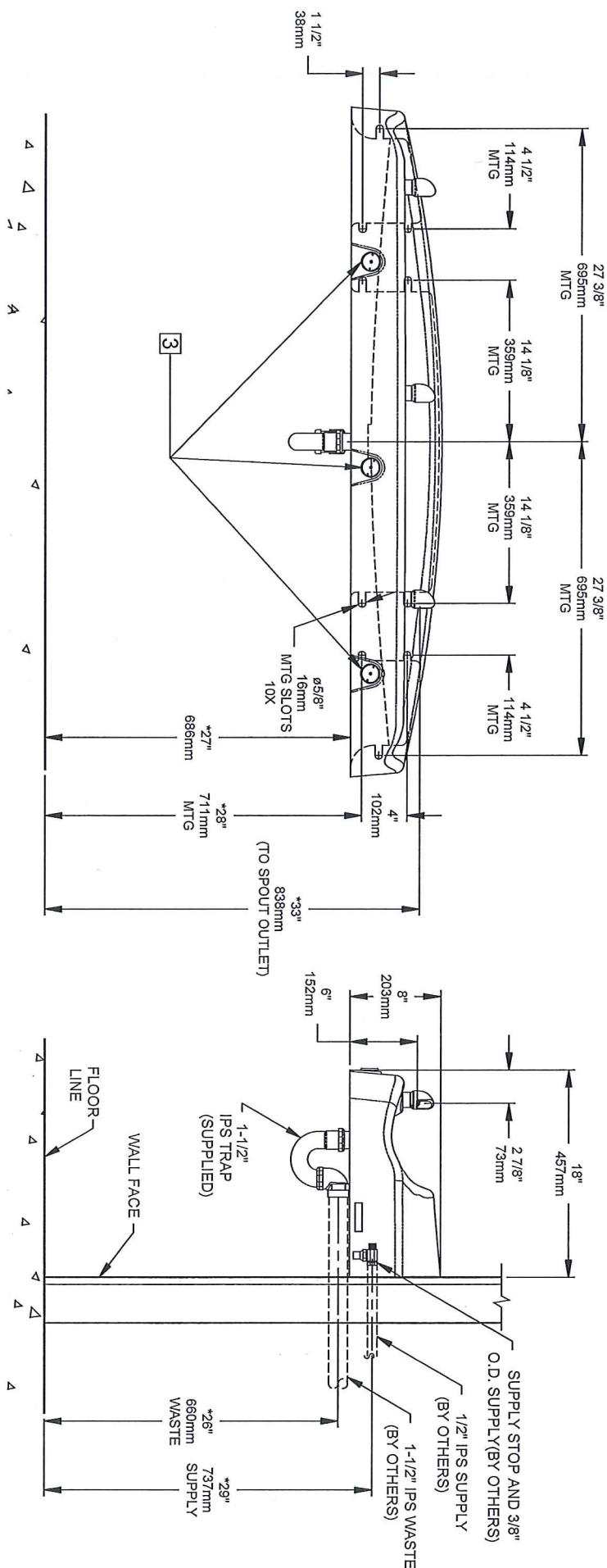
1409


PART NUMBER	0002077601
DRAWING NO.	15215A00
REV	6

WHEN ORDERING PARTS PLEASE SPECIFY MODEL NUMBER.

SCALE: 1:4 DRAWING TYPE: PARTS BREAKDOWN SIZE: A SHEET 1 OF 1

1. HOLD ROUGH-IN DIMENSIONS $\pm 1/4"$ (6.4mm).
2. WHEN INSTALLING THIS UNIT, LOCAL, STATE OR FEDERAL CODES SHOULD BE ADHERED TO, FOR INSTALLATION HEIGHTS OTHER THAN SHOWN. DIMENSIONS MARKED (*) MUST BE ADJUSTED ACCORDINGLY.
3. REFER TO 5874SS OPERATION AND MAINTENANCE MANUAL FOR PUSH BUTTON AND VALVE INSTALLATION/MAINTENANCE INSTRUCTIONS



		1455 KLEPPLE LANE SPARKS, NEVADA 89431 (775) 339-4712 FAX (775) 339-7424 E-MAIL: HWMS@HAWMSCO.COM WEBSITE: WWW.HAWMSCO.COM	
ECN NO.	REMOVED PER B.Y.	MODEL(S)	
ECN: 4828	HM	1409	
DRAWN:	DATE:	CHECKED:	
M. DAVIS	10/19/05	10/19/05	
APPROVED:	DATE:	SCALE:	DRAWING TYPE:
<i>[Signature]</i>	10/19/05	1:14	
INSTALLATION		SIZE: A	SHEET 1 OF 1
DRAWING NO.	REV.		
15214-CO	6		
PART NUMBER			
0002077601.D			