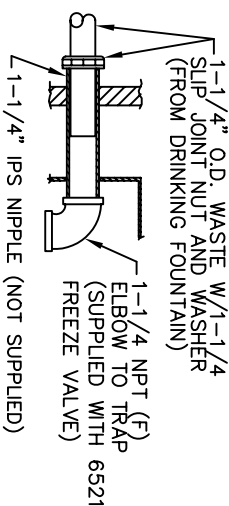
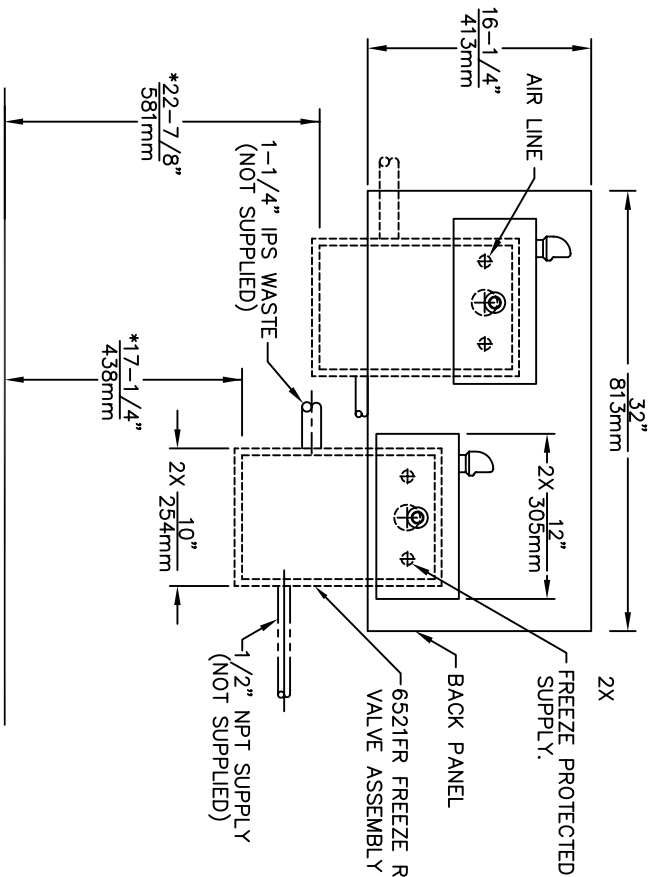


7/8 INSULATED TUBING (MUST COVER ENTIRE SUPPLY TUBING, FROM BUBBLER TO FREEZE VALVE ASSEMBLY, TRIM TO FIT)

3/8 OD VINYL SUPPLY TUBING (CONNECT TO BUBBLER WITH SUPPLIED UNION, TRIM TO FIT)



DETAIL A

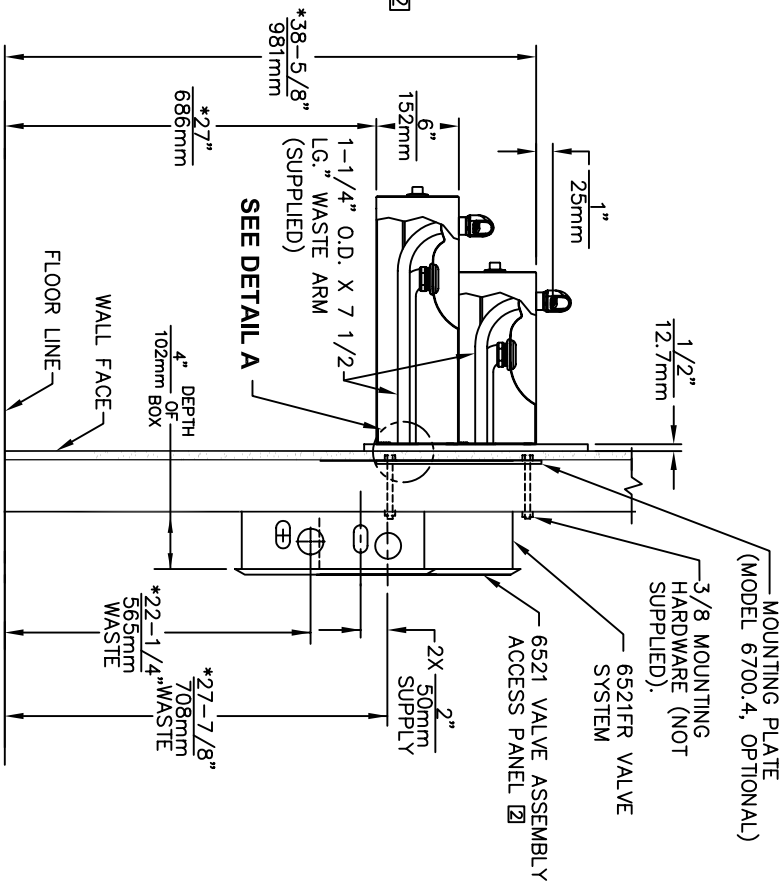


2X FREEZE PROTECTED SUPPLY.

BACK PANEL

6521FR FREEZE RESISTANT VALVE ASSEMBLY (2 REQD)

1/2\"/>



MOUNTING PLATE (MODEL 6700.4, OPTIONAL)

3/8 MOUNTING HARDWARE (NOT SUPPLIED).

6521FR VALVE SYSTEM

6521 VALVE ASSEMBLY ACCESS PANEL

2X 1/2\"/>

27-7/8\"/>

22-1/4\"/>

55mm WASTE

- 1 THIS FOUNTAIN REQUIRES THE USE OF MODEL 6521FR FREEZE RESISTANT VALVE ASSEMBLY (SOLD SEPARATELY)
- 2 VALVE ASSEMBLY MUST BE INSTALLED IN A WARM AREA. PROVISIONS SHOULD BE MADE TO ALLOW ACCESS TO ACCESS PANEL
3. HOLD ROUGH-IN DIMENSIONS ± 1/4" (6.4mm).
4. * WHEN INSTALLING THIS UNIT LOCAL, STATE OR FEDERAL CODES SHOULD BE ADHERED TO, FOR INSTALLATION HEIGHTS OTHER THAN SHOWN, DIMENSIONS MARKED (*) MUST BE ADJUSTED ACCORDINGLY.

Haws Corporation

1455 KLEPPE LANE
SPARKS, NEVADA 89431
(775) 359-4712 FAX (775) 359-7424
E-MAIL: HAWS@HAWS.CO.COM
WEBSITE: WWW.HAWS.CO.COM

| | | | |
|---|--------------------------------------|---------------------------------|--|
| EX. NO. 11199FR DATE: 09/98 APPROVED: | MODEL(S): INFO FAX DOC #: 2111937 | ORDER TYPE: INSTALLATION/EQUIP. | ORDER NO. 002076627.D QTY 1364000 REV 12 |
|---|--------------------------------------|---------------------------------|--|