



INSTALLATION, OPERATION & MAINTENANCE INSTRUCTIONS

1455 Kleppe Lane ♦ Sparks, NV 89431-6467 ♦ (775) 359-4712 ♦ Fax (775) 359-7424
E-mail: haws@hawsco.com ♦ website: www.hawsco.com

No. 2076418(19)

Model 1047 Drinking Fountain

NOTE TO INSTALLER: Please leave this information with the Maintenance Department.

LIMITED WARRANTY

HAWS warrants that this specific product is guaranteed against defective material or poor workmanship for a period of **one year from date of shipment**. HAWS liability under this warranty shall be discharged by furnishing without charge F.O.B. HAWS Factory any goods, or part thereof, which shall appear to the Company upon inspection to be of defective material or not of first class workmanship, provided that claim is made in writing to Haws within a reasonable period after receipt of the product. Where claims for defects are made, the defective part or parts shall be delivered to the Company, prepaid, for inspection. HAWS will not be liable for the cost of repairs, alterations or replacements, or for any expense connected therewith made by the owner or his agents, except upon written authority from HAWS, Sparks, Nevada. HAWS will not be liable for any damages caused by defective materials or poor workmanship, except for replacements, as provided above. Buyer agrees that HAWS shall not be liable for general, special, or consequential damages claimed to arise under the contract of sale. The drinking fountain manufactured by HAWS is warranted to function if installation and maintenance instructions provided are adhered to. The units also must be used for the purpose for which they were intended.

**NO OTHER WARRANTIES EXPRESSED OR IMPLIED ARE AUTHORIZED,
PROVIDED OR GIVEN BY HAWS.**

**SHOULD YOU EXPERIENCE DIFFICULTY WITH THE INSTALLATION OF THIS
MODEL PLEASE CALL:**

TECHNICAL SUPPORT: 1-800-766-5612

FOR CUSTOMER SERVICE: 1-888-640-4297

RECOMMENDED TOOLS: Hack saw, pipe joint sealant, screwdriver, level, 12" adjustable wrench, 10" pipe wrench, 5/64" hex key wrench, 9/16", 1/2", 7/16" socket wrench or open end wrench.

LOCATION OF UNIT: The Model 1047 Drinking Fountain is a wheelchair accessible drinking water facility. The height dimensions shown meet current ADA requirements. When installing this unit, local, state or federal codes should be adhered to. If height other than shown is required, then dimensions must be adjusted accordingly.

SUPPLY LINE: The minimum recommended line size is 1/2"IPS with 30-90 psi (2-6 ATM) flowing pressure. Where sediment or mineral content is a problem, an inlet filter is recommended.

PLUMBING CONNECTIONS: Inlet is 3/8"O.D. compression fitting. Waste outlet is female 1-1/2" IPS.

MAINTENANCE: Periodically clean the strainer. Refer to 5874SS Valve Manual for more information.

| TROUBLESHOOTING | |
|------------------------------|--|
| PROBLEM | REPAIR CHECKLIST |
| 1 Insufficient bubbler flow. | 1. a. Check that inlet screwdriver stop valve is in wide-open position. b. Verify minimum 30 psi supply pressure. c. Clean strainer. See 5874SS Valve Manual d. Adjust valve to increase flow. Use front adjust screw or see 5874SS Valve Manual. |

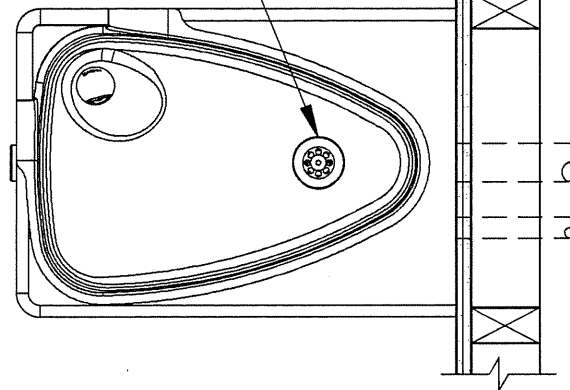
General Notes:

Before tightening nut and ferrule assembly, push tubing into fitting until it bottoms out to ensure correct engagement with O-Ring.

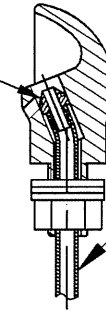
For more information about Haws products, see our website: www.hawscos.com

PARTS BREAKDOWN

STRAINER ASSY.
6466



NOZZLE BODY IS
NOT REMOVABLE



3/8" OD TUBING IS
PART OF BUBBLER
HEAD AND IS NOT
REMOVABLE

DETAIL A
ROTATED 90° INTO VIEW
DETAIL OF 5703M

BUBBLER HEAD
5703M

TRAP
P/N 0005987000

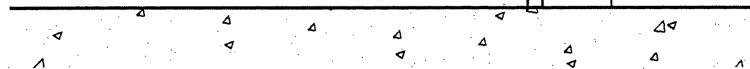
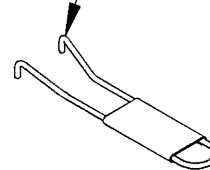
PUSH BUTTON ASSY.
PBA7

MOUNTING PLATE
6700

VALVE
5874SS

ACCESS PLATE
PBM1047

SPANNER WRENCH
P/N 0006983506

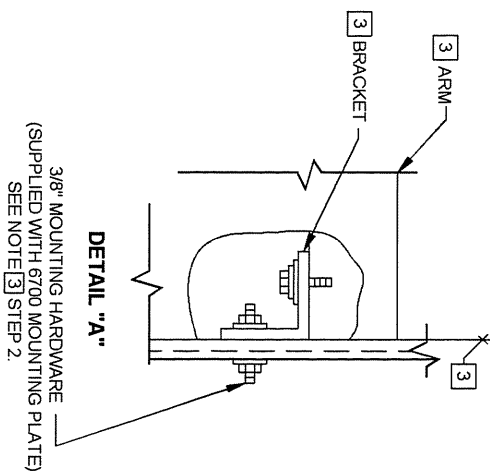
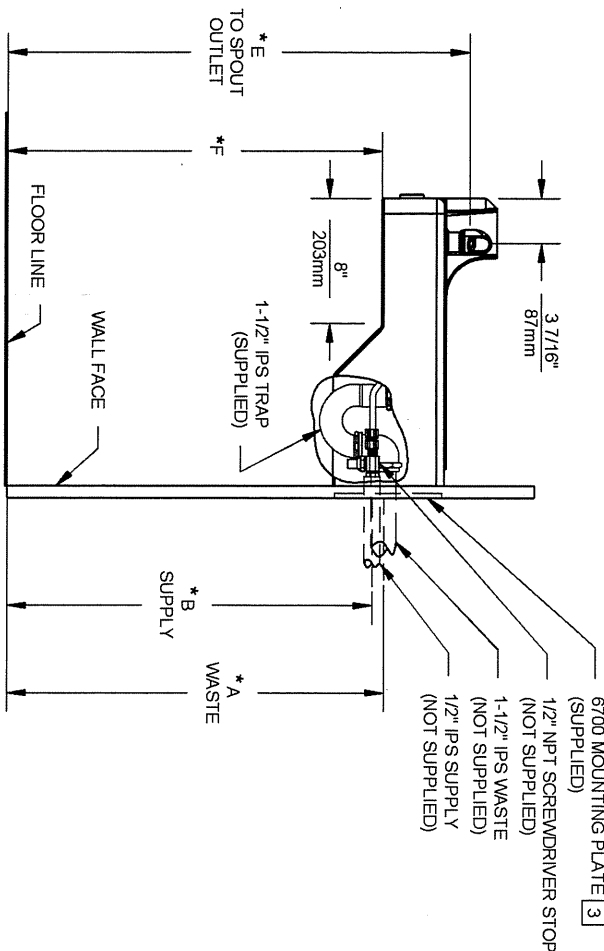
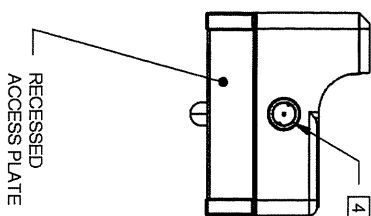


1455 KLEPPE LANE
SPARKS, NEVADA 89431
(775) 359-4712 FAX (775) 359-7424
E-MAIL: HAWS@HAWSO.COM
WEBSITE: WWW.HAWSO.COM

| | | | | | | |
|------------------------|-----------|---------|----------|------|-------------|------------|
| ECN NO. REVISED PER BY | ECN: 4725 | HM | MODEL(S) | 1047 | PART NUMBER | 0002076418 |
| DRAWN | DATE | CHKD | | | DRAWING NO. | REV |
| D. OLLOM | 2/25/05 | 2/25/05 | | | 12781C00 | 19 |
| APPROVED | DATE | | | | | |
| | 2/24/12 | | | | | |

WHEN ORDERING PARTS PLEASE SPECIFY MODEL NUMBER.

WALL MOUNTED DRINKING FOUNTAIN



1. HOLD ROUGH-IN DIMENSIONS $\pm 1/4"$ (6.4mm).
2. WHEN INSTALLING THIS UNIT, LOCAL, STATE OR FEDERAL CODES SHOULD BE ADHERED TO. FOR INSTALLATION HEIGHTS OTHER THAN SHOWN, DIMENSIONS MARKED (*) MUST BE ADJUSTED ACCORDINGLY.

IMPORTANT: BRACKETS ARE PRE-ASSEMBLED AND **MUST NOT** BE LOOSEMED FOR ANY REASON. **STEP 1:** ATTACH ENTIRE ARM ASSEMBLY TO WALL USING 6700 MOUNTING PLATE (SUPPLIED) USING THE 3/8" -16 X 4" T-THREADED RODS, WASHERS AND NUTS (SUPPLIED WITH 6700 MTG PLT) AND TIGHTEN SECURELY IN PLACE.

STEP 2: (OPTIONAL) APPLY CAULKING AS NEEDED TO FILL ANY GAP PRESENT BETWEEN ARM AND PEDESTAL.

- 4 REFER TO 3674SS OPERATION AND MAINTENANCE MANUAL FOR PUSH BUTTON AND VALVE INSTALLATION/MAINTENANCE INSTRUCTIONS.**

| DIM | ADULT ADA | CHILD ADA |
|-----|-----------------|-----------------|
| A | 27-1/2" / 699mm | 24-1/2" / 622mm |
| B | 26-3/8" / 670mm | 23-3/8" / 594mm |
| C | 25-1/8" / 638mm | 22-1/8" / 562mm |
| D | 24-3/8" / 619mm | 21-3/8" / 543mm |
| E | 33-3/4" / 832mm | 29-3/4" / 756mm |
| F | 27" / 686mm | 24" / 610mm |

3/8" MOUNTING HARDWARE —
(SUPPLIED WITH 6700 MOUNTING PLATE)
SEE NOTE [3] STEP 2.

©2012 Haws Corporation - All Rights Reserved. HAWS® and other trademarks used in these materials are the exclusive property of Haws Corporation.