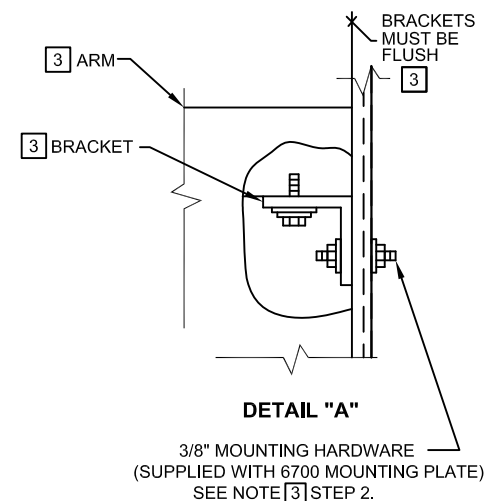
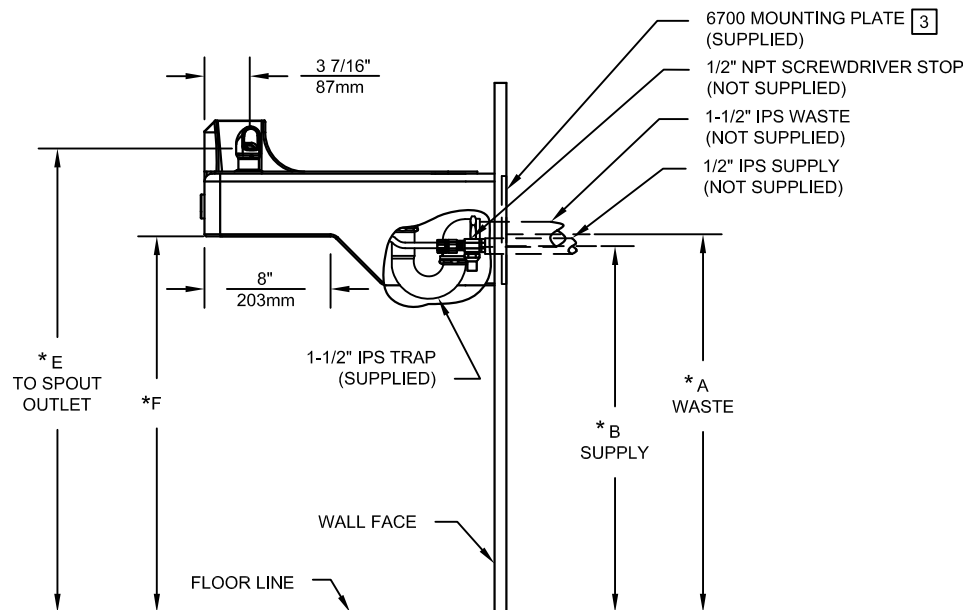
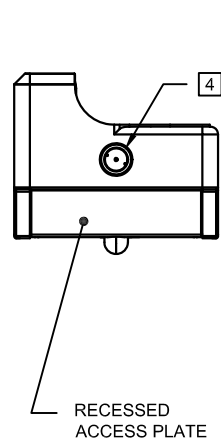



**6700 MOUNTING PLATE
THIS PLATE IS A STANDARD ITEM**



NOTES:

1. HOLD ROUGH-IN DIMENSIONS $\pm 1/4$ " (6.4mm).
2. WHEN INSTALLING THIS UNIT, LOCAL, STATE OR FEDERAL CODES SHOULD BE ADHERED TO. FOR INSTALLATION HEIGHTS OTHER THAN SHOWN, DIMENSIONS MARKED (*) MUST BE ADJUSTED ACCORDINGLY.
3. **PROCEDURE FOR ASSEMBLING ARM TO WALL:**
IMPORTANT: L-BRACKETS ARE PRE-ASSEMBLED AND **MUST NOT** BE LOOSENED FOR ANY REASON.
STEP 1: ATTACH ENTIRE ARM ASSEMBLY TO WALL USING 6700 MOUNTING PLATE (SUPPLIED) USING THE 3/8"-16 X 4" THREADED RODS, WASHERS AND NUTS (SUPPLIED WITH 6700 MTG PLT) AND TIGHTEN SECURELY IN PLACE.
STEP 2: (OPTIONAL) APPLY CAULKING AS NEEDED TO FILL ANY GAP PRESENT BETWEEN ARM AND PEDESTAL.
4. REFER TO 5874SS OPERATION AND MAINTENANCE MANUAL FOR PUSH BUTTON AND VALVE INSTALLATION/MAINTENANCE INSTRUCTIONS.

| DIM | ADULT ADA | CHILD ADA |
|-----|-----------------|-----------------|
| A | 27-1/2" / 699mm | 24-1/2" / 622mm |
| B | 26-3/8" / 670mm | 23-3/8" / 594mm |
| C | 25-1/8" / 638mm | 22-1/8" / 562mm |
| D | 24-3/8" / 619mm | 21-3/8" / 543mm |
| E | 32-3/4" / 832mm | 29-3/4" / 756mm |
| F | 27" / 686mm | 24" / 610mm |



1455 KLEPPE LANE
SPARKS, NEVADA 89431
(775) 359-4712 FAX (775) 359-7424
E-MAIL: HAWS@HAWS.CO.COM
WEBSITE: WWW.HAWS.CO.COM

| | | | | | | | | | |
|--------------|--|------------------|--|--------|--|--------------------------------|--|----------------------|--|
| ECN NO. 4144 | | REVISED PER 4725 | | BY: HM | | MODEL(S) | | PART NUMBER | |
| DRAWN: SLS | | DATE: 07/22/08 | | CHKD: | | 1047 | | 0002076418.D | |
| APPROVED: | | DATE: | | | | WALL MOUNTED DRINKING FOUNTAIN | | DRAWING NO. 10390C00 | |
| | | | | | | SCALE: 1:25 | | SHEET 1 OF 1 | |