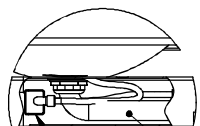


NOTES:

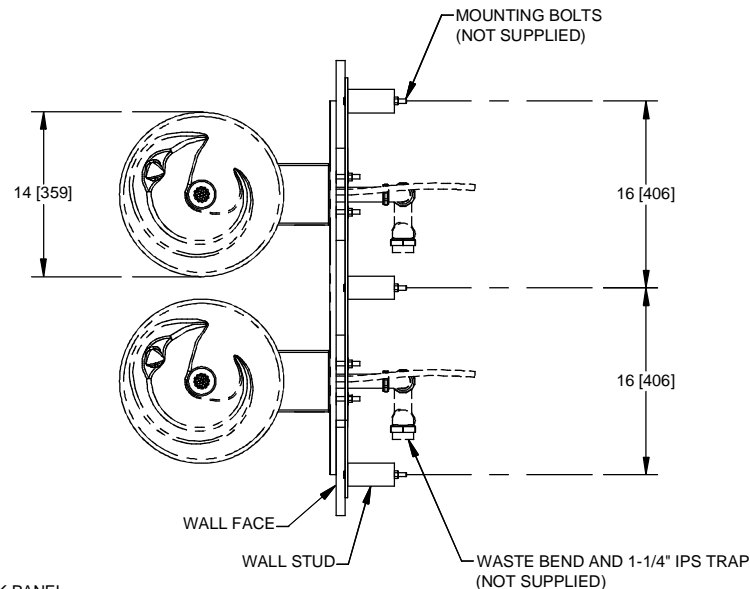
1. HOLD ROUGH-IN DIMENSIONS $\pm 1/8"$ (3.2mm).
2. WHEN INSTALLING THIS UNIT, LOCAL, STATE, OR FEDERAL CODES SHOULD BE ADHERED TO FOR INSTALLATION DIMENSIONS (LOCATIONS), WASTE AND SUPPLY REQUIREMENTS OTHER THAN SHOWN.
3. INSTALLER MUST PROVIDE TRAP FOR PROPER INSTALLATION.
4. REMOVE VALVE FROM PUSH BUTTON TO INSTALL WASTE ELBOW ONTO BOWL. AFTER WASTE ELBOW IS INSTALLED, REINSTALL VALVE AND ADJUST FLOW.
5. REFER TO 5874SS OPERATION AND MAINTENANCE MANUAL FOR PUSH BUTTON AND VALVE INSTALLATION/MAINTENANCE INSTRUCTIONS.



DETAIL A
SCALE 1 : 12

1-1/4" O.D.
WASTE BEND
(SUPPLIED)

3

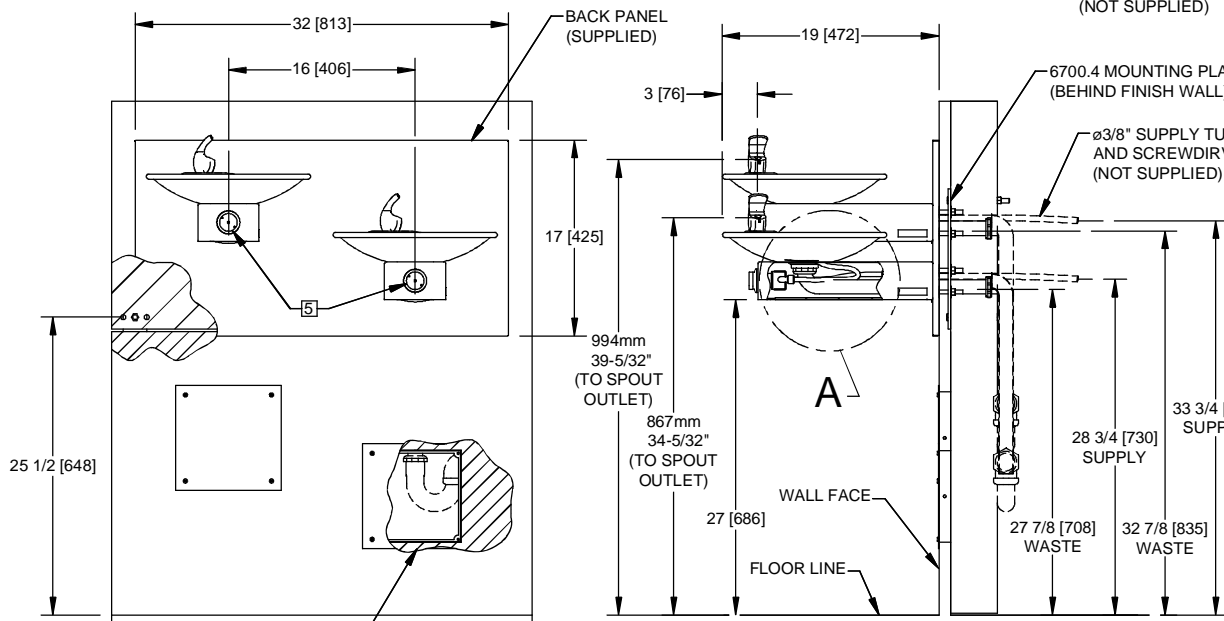
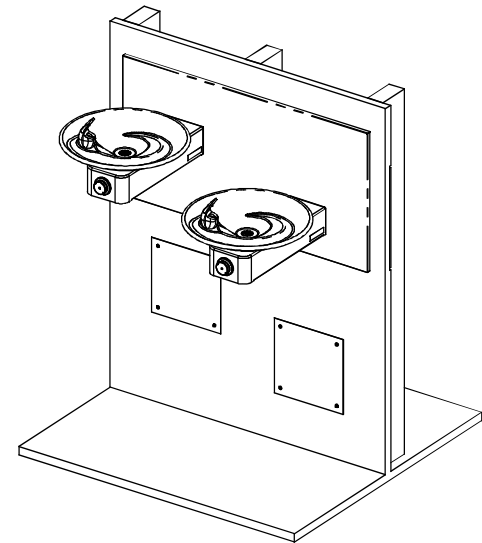


MOUNTING BOLTS
(NOT SUPPLIED)

WALL FACE

WALL STUD

WASTE BEND AND 1-1/4" IPS TRAP
(NOT SUPPLIED)



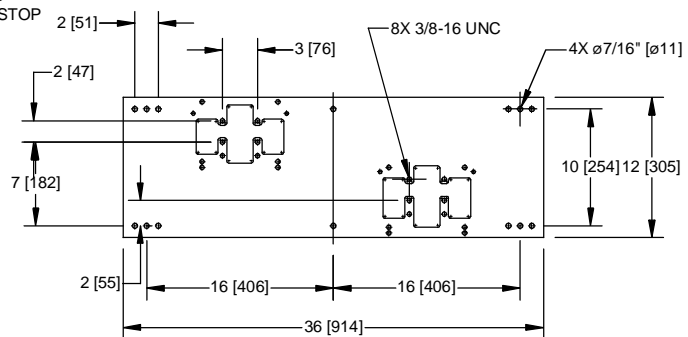
BACK PANEL
(SUPPLIED)

6700.4 MOUNTING PLATE
(BEHIND FINISH WALL)

$\phi 3/8"$ SUPPLY TUBING
AND SCREWDIVER STOP
(NOT SUPPLIED)

WALL FACE

FLOOR LINE



**6700.4 MOUNTING PLATE
MUST BE INSTALLED BEFORE
FINISH WORK. THIS PLATE IS A
STANDARD ITEM.**

OPTIONAL TRAP ACCESS PANEL
MODELS 6603 AND 6603HPS



1455 KLEPPE LANE
SPARKS, NEVADA 89431
(775) 359-4712 FAX (775) 359-7424
E-MAIL: HAWS@HAWS.CO.COM
WEBSITE: WWW.HAWS.CO.COM

ECN NO. REVISED PER BY:	MODEL(S)	PART NUMBER:
ECN: 4797 HM	1011/1011HPS	0002076520.D
DRAWN: RM	DATE: 05/98	DRAWING NO.: 15992A00
APPROVED:	DATE:	REV: 17
SCALE: 1:1	DRAWING TYPE: INSTALLATION	SIZE: A SHEET 1 OF 1

DWG. NO. 15992A00